

## Anti-XIAP-associated factor 1 XAF1 Antibody

Catalog Number: PA1218

### About XAF1

XIAP associated factor-1, also known as XAF1, is a human gene. X-linked inhibitor of apoptosis (XIAP; MIM 300079) is a potent member of the IAP family. All members of this family possess baculoviral IAP (BIR) repeats, cysteine-rich domains of approximately 80 amino acids that bind and inhibit caspases. XAF1 antagonizes the anticaspase activity of XIAP and may be important in mediating apoptosis resistance in cancer cells. And alteration in XAF1 and XIAP RNA expression levels may lead to increased apoptotic resistance and proliferation due to unregulated XIAP function in cancer cells.

### Overview

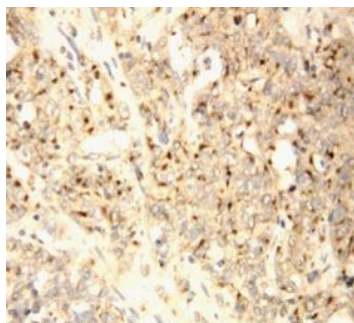
Product Name	Anti-XIAP-associated factor 1 XAF1 Antibody
Reactive Species	Human
Description	Boster Bio Anti-XIAP-associated factor 1 XAF1 Antibody catalog # PA1218. Tested in IHC, WB applications. This antibody reacts with Human.
Application	IHC, WB
Clonality	Polyclonal
Formulation	Each vial contains 5mg BSA, 0.9mg NaCl, 0.2mg Na <sub>2</sub> HPO <sub>4</sub> , 0.05mg Thimerosal, 0.05mg NaN <sub>3</sub> .
Storage Instructions	Store at -20°C for one year from date of receipt. After reconstitution, at 4°C for one month. It can also be aliquotted and stored frozen at -20°C for six months. Avoid repeated freeze-thaw cycles.
Host	Rabbit
Uniprot ID	Q6GPH4

### Technical Details

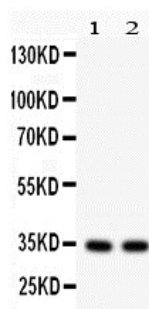
Immunogen	A synthetic peptide corresponding to a sequence at the C-terminus of human XAF1.
Predicted Reactive Species	Hamster
Recommended Detection Systems	Boster recommends Enhanced Chemiluminescent Kit with anti-Rabbit IgG (EK1002) for Western blot, and HRP Conjugated anti-Rabbit IgG Super Vision Assay Kit (SV0002-1) for IHC(P).
Cross Reactivity	No cross-reactivity with other proteins
Isotype	Rabbit IgG
Form	Lyophilized
Concentration	Adding 0.2 ml of distilled water will yield a concentration of 500 ug/ml.

Purification	Immunogen affinity purified.
Suggested Dilutions	<p>Dilute the sample so that the expected range of concentrations fall within the detection range of this kit.</p> <p>If the expected range of concentration is unknown, a pilot test should be conducted to decide the optimal dilution ratio for your samples.</p> <p>Some PubMed article(s) citing the expression level of this target are as follows:</p> <p>Boster Bio's internal QC testing used:</p> <p>Immunohistochemistry (Paraffin-embedded Section), 0.5-1ug/ml, Human, By Heat</p> <p>Western blot, 0.1-0.5ug/ml, Human</p>

## Anti-XIAP-associated factor 1 XAF1 Antibody (PA1218) Images



Anti-XAF1 antibody, PA1218, IHC(P)  
IHC(P): Human Endometrial Carcinoma Tissue



Anti-XAF1 antibody, PA1218, Western blotting  
All lanes: Anti XAF1 (PA1218) at 0.5ug/ml  
Lane 1: HEPG2 Whole Cell Lysate at 40ug  
Lane 2: HEPG2 Whole Cell Lysate at 40ug  
Predicted bind size: 34KD  
Observed bind size: 34KD

### Submit a product review to Biocompare.com

Submit a review of this product to Biocompare.com to receive a \$20 Amazon.com giftcard! Your reviews help your fellow scientists make the right decisions. Thank you for your contribution.



Anti-XIAP-associated factor 1 XAF1 Antibody