

Anti-Bcl-XS/BCL2L1 Antibody

Catalog Number: PA1232

About BCL2L1

Bcl-xS is the second mRNA species of Bcl-x protein, which encodes a protein that inhibits the ability of bcl-2 to enhance the survival of growth factor-deprived cells. In vivo, bcl-xS mRNA is expressed at high levels in cells that undergo a high rate of turnover, such as developing lymphocytes. Apoptosis was associated with increased protein expression of Bcl-X/S, an early marker of apoptosis, and release of cytochrome c into the cytosol of infected HB cells.

Overview

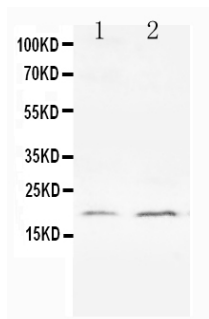
Product Name	Anti-Bcl-XS/BCL2L1 Antibody
Reactive Species	Human, Mouse, Rat
Description	Boster Bio Anti-Bcl-XS/BCL2L1 Antibody catalog # PA1232. Tested in IHC, WB applications. This antibody reacts with Human, Mouse, Rat.
Application	IHC, WB
Clonality	Polyclonal
Formulation	Each vial contains 5mg BSA, 0.9mg NaCl, 0.2mg Na2HPO4, 0.05mg Thimerosal, 0.05mg NaN3.
Storage Instructions	Store at -20°C for one year from date of receipt. After reconstitution, at 4°C for one month. It can also be aliquotted and stored frozen at -20°C for six months. Avoid repeated freeze-thaw cycles.
Host	Rabbit
Uniprot ID	Q07817

Technical Details

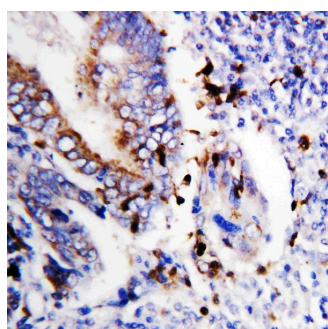
Immunogen	A synthetic peptide corresponding to a sequence in the middle region of human Bcl-XS, different from the related rat and mouse sequences by one amino acid.
Predicted Reactive Species	Monkey
Recommended Detection Systems	Boster recommends Enhanced Chemiluminescent Kit with anti-Rabbit IgG (EK1002) for Western blot, and HRP Conjugated anti-Rabbit IgG Super Vision Assay Kit (SV0002-1) for IHC(P).
Cross Reactivity	No cross-reactivity with other proteins
Isotype	Rabbit IgG
Form	Lyophilized
Concentration	Adding 0.2 ml of distilled water will yield a concentration of 500 ug/ml.

Purification	Immunogen affinity purified.
Suggested Dilutions	<p>Dilute the sample so that the expected range of concentrations fall within the detection range of this kit.</p> <p>If the expected range of concentration is unknown, a pilot test should be conducted to decide the optimal dilution ratio for your samples.</p> <p>Some PubMed article(s) citing the expression level of this target are as follows:</p> <p>Boster Bio's internal QC testing used:</p> <p>Immunohistochemistry (Paraffin-embedded Section), 0.5-1ug/ml, Human, By Heat</p> <p>Western blot, 0.1-0.5ug/ml, Human, Rat, Mouse</p>

Anti-Bcl-XS/BCL2L1 Antibody (PA1232) Images



Anti-Bcl-XS antibody, PA1232, Western blotting
All lanes: Anti Bcl-XS (PA1232) at 0.5ug/ml
Lane 1: HELA Whole Cell Lysate at 40ug
Lane 2: PC-12 Whole Cell Lysate at 40ug
Predicted bind size: 19KD
Observed bind size: 19KD



Anti-Bcl-XS antibody, PA1232, IHC(P)
IHC(P): Human Colon Cancer Tissue

10 Publications Citing This Product

1. PubMed ID: 10.3390/i7020059, Downregulation of the Expression of GLUT1 Plays a Role in Apoptosis Induced by Sodium Butyrate in HT-29 Cell Line
2. PubMed ID: 10.1016/j.transproceed.2006.06.007, Conversion From Cyclosporine to Mycophenolate Mofetil Improves Expression of A20 in the Rat Kidney Allografts Undergoing Chronic Rejection
3. PubMed ID: 10.1016/j.transproceed.2006.06.008, Comparison of Rapamycin Versus FK506 on Expression of Cytoprotective Genes in the Rat Kidney Allografts Undergoing Chronic Allograft Nephropathy

Visit bosterbio.com/anti-bcl-xs-antibody-pa1232-boster.html to see all 10 publications.

Submit a product review to Biocompare.com

Submit a review of this product to Biocompare.com to receive a \$20 Amazon.com giftcard! Your reviews help your fellow scientists make the right decisions. Thank you for your contribution.



Anti-Bcl-XS/BCL2L1 Antibody