

## Anti-CXCR4 Antibody

Catalog Number: PA1237

### About CXCR4

CXCR4 (Chemokine, CXC Motif, Receptor 4), also known as FUSIN or NPY3R, is a protein that in humans is encoded by the CXCR4 gene. It is the receptor for the CXC chemokine SDF1 that has essential functions on embryo organogenesis, immunological functions and T lymphocyte trafficking. CXCR4 is the only SDF1 receptor identified so far. This suggests that CXCR4 expression is critical for the biological effects of SDF1. CXCR4 is also a seven-transmembrane-spanning, G-protein-coupled receptor for the CXC chemokine PBSF/SDF-1. It functions as a co-receptor for T-cell-line tropic human immunodeficiency virus HIV-1. It was concluded that PBSF/SDF-1 and CXCR4 define a new signalling system for organ vascularization.

### Overview

Product Name	Anti-CXCR4 Antibody
Reactive Species	Human, Mouse, Rat
Description	Boster Bio Anti-CXCR4 Antibody catalog # PA1237. Tested in IHC, WB applications. This antibody reacts with Human, Mouse, Rat.
Application	IHC, WB
Clonality	Polyclonal
Formulation	Each vial contains 5mg BSA, 0.9mg NaCl, 0.2mg Na <sub>2</sub> HPO <sub>4</sub> , 0.05mg Thimerosal, 0.05mg NaN <sub>3</sub> .
Storage Instructions	Store at -20°C for one year from date of receipt. After reconstitution, at 4°C for one month. It can also be aliquotted and stored frozen at -20°C for six months. Avoid repeated freeze-thaw cycles.
Host	Rabbit
Uniprot ID	P61073

### Technical Details

Immunogen	A synthetic peptide corresponding to a sequence at the N-terminus of human CXCR4, different from the related rat and mouse sequences by two amino acids.
Predicted Reactive Species	Bovine
Recommended Detection Systems	Boster recommends Enhanced Chemiluminescent Kit with anti-Rabbit IgG (EK1002) for Western blot, and HRP Conjugated anti-Rabbit IgG Super Vision Assay Kit (SV0002-1) for IHC(P).
Cross Reactivity	No cross-reactivity with other proteins
Isotype	Rabbit IgG
Form	Lyophilized

Concentration	Adding 0.2 ml of distilled water will yield a concentration of 500 ug/ml.
Purification	Immunogen affinity purified.
Suggested Dilutions	<p>Dilute the sample so that the expected range of concentrations fall within the detection range of this kit.</p> <p>If the expected range of concentration is unknown, a pilot test should be conducted to decide the optimal dilution ratio for your samples.</p> <p>Some PubMed article(s) citing the expression level of this target are as follows:</p> <p>Boster Bio's internal QC testing used:</p> <p>Immunohistochemistry (Paraffin-embedded Section), 0.5-1ug/ml, Human, By Heat</p> <p>Western blot, 0.1-0.5ug/ml, Human, Rat, Mouse</p>

## Anti-CXCR4 Antibody (PA1237) Images

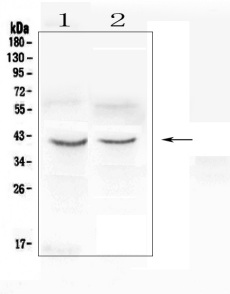


Figure 1. Western blot analysis of CXCR4 using anti-CXCR4 antibody (PA1237).

Electrophoresis was performed on a 5-20% SDS-PAGE gel at 70V (Stacking gel) / 90V (Resolving gel) for 2-3 hours. The sample well of each lane was loaded with 50ug of sample under reducing conditions.

Lane 1: human THP-1 whole cell lysates,

Lane 2: human Hela whole cell lysates.

After Electrophoresis, proteins were transferred to a Nitrocellulose membrane at 150mA for 50-90 minutes. Blocked the membrane with 5% Non-fat Milk/ TBS for 1.5 hour at RT. The membrane was incubated with rabbit anti-CXCR4 antigen affinity purified polyclonal antibody (Catalog # PA1237) at 0.5 ug/mL overnight at 4°C, then washed with TBS-0.1%Tween 3 times with 5 minutes each and probed with a goat anti-rabbit IgG-HRP secondary antibody at a dilution of 1:10000 for 1.5 hour at RT. The signal is developed using an Enhanced Chemiluminescent detection (ECL) kit (Catalog # EK1002) with Tanon 5200 system. A specific band was detected for CXCR4 at approximately 40-43KD. The expected band size for CXCR4 is at 40KD.

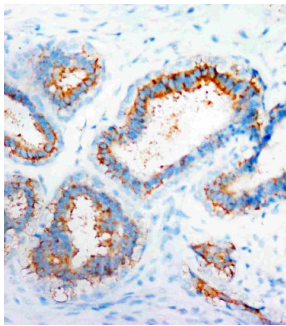


Figure 2. IHC analysis of CXCR4 using anti-CXCR4 antibody (PA1237).

CXCR4 was detected in paraffin-embedded section of human mammary cancer tissues. Heat mediated antigen retrieval was performed in citrate buffer (pH6, epitope retrieval solution) for 20 mins. The tissue section was blocked with 10% goat serum. The tissue section was then incubated with 1ug/ml rabbit anti-CXCR4 Antibody (PA1237) overnight at 4°C. Biotinylated goat anti-rabbit IgG was used as secondary antibody and incubated for 30 minutes at 37°C. The tissue section was developed using Streptavidin-Biotin-Complex (SABC)(Catalog # SA1022) with DAB as the chromogen.

## 28 Publications Citing This Product

1. PubMed ID: 10.3748/wjg.v17.i19.2389, CXCR4/SDF-1 axis is involved in lymph node metastasis of gastric carcinoma
2. PubMed ID: 10.3760/cma.j.issn.0366-6999.20123471, Effect of CO<sub>2</sub> pneumoperitoneum on the expression of the chemokine receptors CXCR4 and CCR7 in colorectal carcinoma cells in vitro
3. PubMed ID: 10.1186/1756-9966-27-62, Chemokine CXCL12 and its receptor CXCR4 expression are associated with perineural invasion of prostate cancer

Visit [bosterbio.com/anti-cxcr4-antibody-pa1237-boster.html](http://bosterbio.com/anti-cxcr4-antibody-pa1237-boster.html) to see all 28 publications.

**Submit a product review to Biocompare.com**

Submit a review of this product to Biocompare.com to receive a \$20 Amazon.com giftcard! Your reviews help your fellow scientists make the right decisions. Thank you for your contribution.



## Anti-CXCR4 Antibody