

Anti-Sodium channel subunit beta-1 SCN1B Antibody

Catalog Number: PA1244

About SCN1B

Voltage-gated sodium (Na⁺) channels are essential for the generation and propagation of action potentials in striated muscle and neuronal tissues. The complete coding region of Sodium channel, voltage-gated, beta 1 (SCN1B) is found in approximately 9.0 kb of genomic DNA and consists of five exons (72 to 749 bp) and four introns (90 bp to 5.5 kb). It is mapped to 19q13.1 and can act as a candidate gene for hereditary disorders affecting membrane excitability. Sodium channel beta1 subunits play important roles in the regulation of sodium channel density and localization and are involved in axo-glial communication at nodes of Ranvier.

Overview

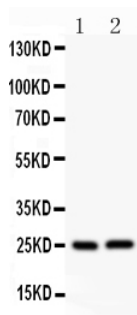
Product Name	Anti-Sodium channel subunit beta-1 SCN1B Antibody
Reactive Species	Human, Mouse, Rat
Description	Boster Bio Anti-Sodium channel subunit beta-1 SCN1B Antibody catalog # PA1244. Tested in WB applications. This antibody reacts with Human, Mouse, Rat.
Conjugate	FITC
Application	WB
Clonality	Monoclonal BAM-10
Formulation	Each vial contains 5mg BSA, 0.9mg NaCl, 0.2mg Na ₂ HPO ₄ , 0.05mg Thimerosal, 0.05mg NaN ₃ .
Storage Instructions	The product should be stored undiluted at 4°C and should be protected from prolonged exposure to light. Do not freeze.
Host	Hamster
Uniprot ID	Q07699

Technical Details

Immunogen	A synthetic peptide corresponding to a sequence at the N-terminus of human SCN1B, identical to the related rat and mouse sequences.
Predicted Reactive Species	Hamster
Recommended Detection Systems	Boster recommends Enhanced Chemiluminescent Kit with anti-Rabbit IgG (EK1002) for Western blot.
Cross Reactivity	No cross reactivity with other proteins
Form	Lyophilized
Concentration	Add 0.2ml of distilled water will yield a concentration of 500ug/ml.

Purification	Immunogen Affinity Purified
Suggested Dilutions	<p>Dilute the sample so that the expected range of concentrations fall within the detection range of this kit.</p> <p>If the expected range of concentration is unknown, a pilot test should be conducted to decide the optimal dilution ratio for your samples.</p> <p>Some PubMed article(s) citing the expression level of this target are as follows:</p> <p>Boster Bio's internal QC testing used:</p> <p>Western blot, 0.1-0.5ug/ml, Human, Rat, Mouse</p>

Anti-Sodium channel subunit beta-1 SCN1B Antibody (PA1244) Images



Anti-SCN1B antibody, PA1244, Western blotting
All lanes: Anti SCN1B (PA1244) at 0.5ug/ml
Lane 1: Rat Testis Tissue Lysate at 50ug
Lane 2: HELA Whole Cell Lysate at 40ug
Predicted bind size: 25KD
Observed bind size: 25KD

Submit a product review to Biocompare.com

Submit a review of this product to Biocompare.com to receive a \$20 Amazon.com giftcard! Your reviews help your fellow scientists make the right decisions. Thank you for your contribution.



Anti-Sodium channel subunit beta-1 SCN1B Antibody