

## Anti-SDHA Antibody

Catalog Number: PA1306

### About SDHA

Complex II of the mitochondrial respiratory chain, also known as succinate dehydrogenase or succinate:ubiquinone oxidoreductase, consists of 4 nuclear-encoded polypeptides, these are the flavoprotein subunit (SDHA), the iron sulfur protein subunit (SDHB), and the integral membrane protein subunits SDHC and SDHD. SDHA is an acronym for succinate dehydrogenase complex subunit A. The succinate dehydrogenase (SDH) protein complex catalyzes the oxidation of succinate (succinate + ubiquinone => fumarate + ubiquinol). The SDHA subunit is connected to the SDHB subunit on the hydrophilic, catalytic end of the complex, and weighs 72.7 kDA. Mutations in the SDHA subunit have a distinct pathology from mutations in the SDHB/SDHC/SDHD subunits; it is the only subunit to never have shown tumor suppressor behaviour. Heterozygous carriers of an SDHA mutation do not develop paragangliomas as has been seen for mutations in the other subunits. This appears to be due to the expression of two similar SDHA genes (Types I and II) in the paraganglia system.

### Overview

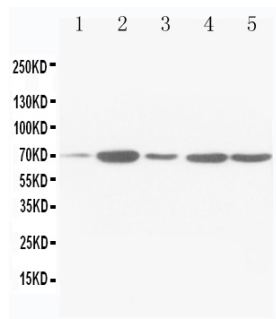
Product Name	Anti-SDHA Antibody
Reactive Species	Human, Mouse, Rat
Description	Boster Bio Anti-SDHA Antibody catalog # PA1306. Tested in IHC-P, WB applications. This antibody reacts with Human, Mouse, Rat.
Application	IHC-P, WB
Clonality	Polyclonal G9
Formulation	Each vial contains 5mg BSA, 0.9mg NaCl, 0.2mg Na2HPO4, 0.05mg Thimerosal, 0.05mg NaN3.
Storage Instructions	Store at -20°C for one year from date of receipt. After reconstitution, at 4°C for one month. It can also be aliquotted and stored frozen at -20°C for six months. Avoid repeated freeze-thaw cycles.
Host	Rabbit
Uniprot ID	P31040

### Technical Details

Immunogen	A synthetic peptide corresponding to a sequence at the C-terminus of human SDHA, identical to the related rat and mouse sequences.
Predicted Reactive Species	Hamster
Recommended Detection Systems	Boster recommends Enhanced Chemiluminescent Kit with anti-Rabbit IgG (EK1002) for Western blot, and HRP Conjugated anti-Rabbit IgG Super Vision Assay Kit (SV0002-1) for IHC(P).
Cross Reactivity	No cross reactivity with other proteins
Form	Lyophilized

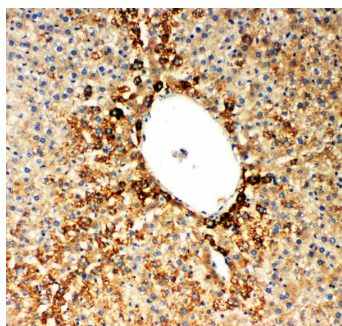
Concentration	Add 0.2ml of distilled water will yield a concentration of 500ug/ml.
Purification	Immunogen affinity purified.
Suggested Dilutions	<p>Dilute the sample so that the expected range of concentrations fall within the detection range of this kit.</p> <p>If the expected range of concentration is unknown, a pilot test should be conducted to decide the optimal dilution ratio for your samples.</p> <p>Some PubMed article(s) citing the expression level of this target are as follows:</p> <p>Boster Bio's internal QC testing used:</p> <p>Western blot, 0.1-0.5ug/ml, Human, Rat, Mouse</p> <p>Immunohistochemistry (Paraffin-embedded Section), 0.5-1ug/ml, Rat, Mouse, By Heat</p>

## Anti-SDHA Antibody (PA1306) Images



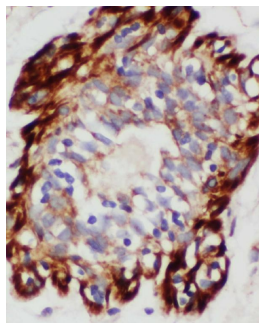
Anti-SDHA antibody, PA1306, Western blotting

Lane 1: MCF-7 Cell Lysate  
Lane 2: HELA Cell Lysate  
Lane 3: JURKAT Cell Lysate  
Lane 4: HT1080 Cell Lysate  
Lane 5: COLO320 Cell Lysate



Anti-SDHA antibody, PA1306, IHC(P)

IHC(P): Rat Liver Tissue



Anti-SDHA antibody, PA1306, IHC(P)

IHC(P): Human Mammary Cancer Tissue

## Submit a product review to Biocompare.com

Submit a review of this product to Biocompare.com to receive a \$20 Amazon.com giftcard! Your reviews help your fellow scientists make the right decisions. Thank you for your contribution.



Anti-SDHA Antibody