

Anti-SNAP25 Antibody

Catalog Number: PA1315

About SNAP25

Synaptosome-associated protein of 25,000 daltons also known as SNAP-25 is a protein which in humans encodes a 25-kD protein of 206 amino acids. It was first investigated as a neuron-specific gene preferentially expressed in mouse hippocampus. The tSNARE (the target-membrane soluble NSF-attachment protein receptor, where NSF is N-ethylmaleimide-sensitive fusion protein) synaptosomal-associated protein of 25 kDa (SNAP-25) is expressed in pancreatic B-cells and its cleavage by botulinum neurotoxin E (BoNT/E) abolishes stimulated secretion of insulin. In the nervous system, two SNAP-25 isoforms (a and b) have been described, which are produced by alternative splicing. Nagy et al. (2004) identified mammalian Snap25a and Snap25b as targets of protein kinase A, a key regulator of neurosecretion that primes slowly releasable pools and readily releasable pools of secretory vesicles. SNAP-25 inhibits P/Q- and L-type voltage-gated calcium channels located presynaptically and interacts with the synaptotagmin C2B domain in Ca²⁺-independent fashion. In glutamatergic synapses SNAP-25 decreases the Ca²⁺ responsiveness, while it is naturally absent in GABAergic synapses.

Overview

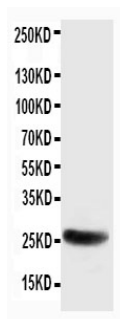
Product Name	Anti-SNAP25 Antibody
Reactive Species	Human, Mouse, Rat
Description	Boster Bio Anti-SNAP25 Antibody catalog # PA1315. Tested in IHC, WB applications. This antibody reacts with Human, Mouse, Rat.
Application	IHC, WB
Clonality	Polyclonal
Formulation	Each vial contains 5mg BSA, 0.9mg NaCl, 0.2mg Na ₂ HPO ₄ , 0.05mg Thimerosal, 0.05mg NaN ₃ .
Storage Instructions	Store at -20°C for one year from date of receipt. After reconstitution, at 4°C for one month. It can also be aliquotted and stored frozen at -20°C for six months. Avoid repeated freeze-thaw cycles.
Host	Rabbit
Uniprot ID	P60880

Technical Details

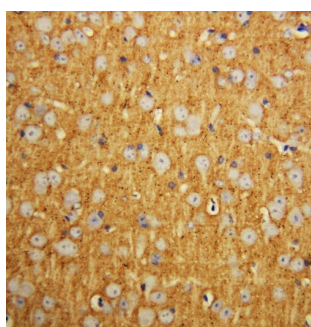
Immunogen	A synthetic peptide corresponding to a sequence at the C-terminus of human SNAP25, identical to the related rat and mouse sequences.
Predicted Reactive Species	Hamster
Recommended Detection Systems	Boster recommends Enhanced Chemiluminescent Kit with anti-Rabbit IgG (EK1002) for Western blot, and HRP Conjugated anti-Rabbit IgG Super Vision Assay Kit (SV0002-1) for IHC(P).
Cross Reactivity	No cross-reactivity with other proteins

Isotype	Rabbit IgG
Form	Lyophilized
Concentration	Adding 0.2 ml of distilled water will yield a concentration of 500 ug/ml.
Purification	Immunogen affinity purified.
Suggested Dilutions	<p>Dilute the sample so that the expected range of concentrations fall within the detection range of this kit.</p> <p>If the expected range of concentration is unknown, a pilot test should be conducted to decide the optimal dilution ratio for your samples.</p> <p>Some PubMed article(s) citing the expression level of this target are as follows:</p> <p>Boster Bio's internal QC testing used:</p> <p>Immunohistochemistry (Paraffin-embedded Section), 0.5-1ug/ml, Rat, Human, Mouse, By Heat</p> <p>Western blot, 0.1-0.5ug/ml, Rat, Human, Mouse</p>

Anti-SNAP25 Antibody (PA1315) Images



Anti-SNAP25 antibody, PA1315, Western blotting
WB: Rat Brain Tissue Lysate



Anti-SNAP25 antibody, PA1315, IHC(P)
IHC(P): Rat Brain Tissue

2 Publications Citing This Product

1. PubMed ID: 32930942, Guan Y, Chen X, Zhao B, Shi Y, Han F. What Happened in the Hippocampal Axon in a Rat Model of Posttraumatic Stress Disorder. Cell Mol Neurobiol. 2020 Sep 15. doi:10.1007/s10571-020-00960-w. Epub ahead of print. PMID:32930942.
2. PubMed ID: 28761431, Zhong ZQ, Xiang Y, Hu X, Wang YC, Zeng X, Wang XM, Xia QJ, Wang TH, Zhang X. Neural Regen Res. 2017 Jun;12(6):969-976. doi: 10.4103/1673-5374.208592. Synaptosomal-associated protein 25 may be an intervention target for improving sensory and locomotion...

Visit bosterbio.com/anti-snap25-antibody-pa1315-boster.html to see all 2 publications.

Submit a product review to Biocompare.com

Submit a review of this product to Biocompare.com to receive a \$20 Amazon.com giftcard! Your reviews help your fellow scientists make the right decisions. Thank you for your contribution.



Anti-SNAP25 Antibody