

Anti-Hex/HHEX Antibody

Catalog Number: PA1326

About HHEX

Hematopoietically-expressed homeobox protein HHEX is a protein that in humans is encoded by the HHEX gene. Homeobox genes are members of a family of transcription factors that regulate tissue development in many different organisms. Hromas et al. (1993) set out to identify homeobox genes that might play a role in hematopoiesis. And using somatic cell hybrid analysis, they mapped the HHEX gene to chromosome 10, where the HOX11 gene is located. Homeobox genes are involved in neoplastic transformation of both epithelial and hemopoietic tissues. The divergent homeobox gene HEX is expressed in the anterior visceral endoderm during early mouse development and in some adult tissues of endodermal origin, including liver and thyroid. D'Elia et al.'s findings suggested that regulation of HEX entry in the nucleus of thyrocytes may represent a critical step during human thyroid tumorigenesis.

Overview

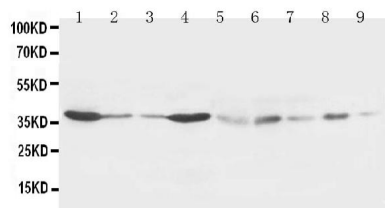
Product Name	Anti-Hex/HHEX Antibody
Reactive Species	Human, Mouse, Rat
Description	Boster Bio Anti-Hex/HHEX Antibody catalog # PA1326. Tested in WB applications. This antibody reacts with Human, Mouse, Rat.
Application	WB
Clonality	Polyclonal JLT-12
Formulation	Each vial contains 5mg BSA, 0.9mg NaCl, 0.2mg Na2HPO4, 0.05mg Thimerosal, 0.05mg NaN3.
Storage Instructions	Store at -20°C for one year from date of receipt. After reconstitution, at 4°C for one month. It can also be aliquotted and stored frozen at -20°C for six months. Avoid repeated freeze-thaw cycles.
Host	Rabbit
Uniprot ID	Q03014

Technical Details

Immunogen	A synthetic peptide corresponding to a sequence at the N-terminus of human Hex, different from the related mouse sequence by one amino acid.
Predicted Reactive Species	Chicken
Recommended Detection Systems	Boster recommends Enhanced Chemiluminescent Kit with anti-Rabbit IgG (EK1002) for Western blot.
Cross Reactivity	No cross reactivity with other proteins
Isotype	Rabbit IgG

Form	Lyophilized
Concentration	Adding 0.2 ml of distilled water will yield a concentration of 500 ug/ml.
Purification	Immunogen affinity purified.
Suggested Dilutions	<p>Dilute the sample so that the expected range of concentrations fall within the detection range of this kit.</p> <p>If the expected range of concentration is unknown, a pilot test should be conducted to decide the optimal dilution ratio for your samples.</p> <p>Some PubMed article(s) citing the expression level of this target are as follows:</p> <p>Boster Bio's internal QC testing used:</p> <p>Western blot, 0.1-0.5ug/ml, Human, Rat, Mouse</p>

Anti-Hex/HHEX Antibody (PA1326) Images



Anti-Hex antibody, PA1326, Western blotting

Lane 1: Rat Liver Tissue Lysate
Lane 2: Rat Thymus Tissue Lysate
Lane 3: Rat Lung Tissue Lysate
Lane 4: Rat Pancreas Tissue Lysate
Lane 5: HT1080 Cell Lysate
Lane 6: MM453 Cell Lysate
Lane 7: SMMC Cell Lysate
Lane 8: 6T-CEM Cell Lysate
Lane 9: COLO320 Cell Lysate

Submit a product review to Biocompare.com

Submit a review of this product to Biocompare.com to receive a \$20 Amazon.com giftcard! Your reviews help your fellow scientists make the right decisions. Thank you for your contribution.



Anti-Hex/HHEX Antibody