

Anti-VEGFD/FIGF Antibody

Catalog Number: PA1332

About VEGFD

C-fos induced growth factor (FIGF) (or vascular endothelial growth factor D, VEGF-D) is a vascular endothelial growth factor that in humans is encoded by the FIGF gene. The protein encoded by this gene is a member of the platelet-derived growth factor/vascular endothelial growth factor (PDGF/VEGF) family and is active in angiogenesis, lymphangiogenesis, and endothelial cell growth. Analyzing by Northern blotting, Yamada et al. (1997) symbolized VEGFD, was expressed as a 2.2-kb transcript with highest expression in lung, heart, small intestine, and fetal lung, and lower levels in skeletal muscle, colon, and pancreas. And Achen et al. (1998) concluded that VEGFD was most closely related to VEGFC by virtue of the presence of N- and C-terminal extensions that were not found in other VEGF family members. Stacker et al. (2001) showed that VEGFD can induce tumor angiogenesis through VEGFR2 and tumor lymphangiogenesis through VEGFR3, whereas VEGF, which does not activate VEGFR3, induces only tumor angiogenesis.

Overview

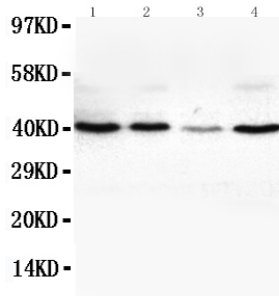
Product Name	Anti-VEGFD/FIGF Antibody
Reactive Species	Human, Mouse, Rat
Description	Boster Bio Anti-VEGFD/FIGF Antibody catalog # PA1332. Tested in IHC, WB applications. This antibody reacts with Human, Mouse, Rat.
Application	IHC, WB
Clonality	Polyclonal
Formulation	Each vial contains 5mg BSA, 0.9mg NaCl, 0.2mg Na2HPO4, 0.05mg Thimerosal, 0.05mg NaN3.
Storage Instructions	Store at -20°C for one year from date of receipt. After reconstitution, at 4°C for one month. It can also be aliquotted and stored frozen at -20°C for six months. Avoid repeated freeze-thaw cycles.
Host	Rabbit
Uniprot ID	O43915

Technical Details

Immunogen	A synthetic peptide corresponding to a sequence in the middle region of human VEGFD, identical to the related rat and mouse sequences.
Predicted Reactive Species	Hamster
Recommended Detection Systems	Boster recommends Enhanced Chemiluminescent Kit with anti-Rabbit IgG (EK1002) for Western blot, and HRP Conjugated anti-Rabbit IgG Super Vision Assay Kit (SV0002-1) for IHC(P).
Cross Reactivity	No cross-reactivity with other proteins
Isotype	Rabbit IgG

Form	Lyophilized
Concentration	Adding 0.2 ml of distilled water will yield a concentration of 500 ug/ml.
Purification	Immunogen affinity purified.
Suggested Dilutions	<p>Dilute the sample so that the expected range of concentrations fall within the detection range of this kit.</p> <p>If the expected range of concentration is unknown, a pilot test should be conducted to decide the optimal dilution ratio for your samples.</p> <p>Some PubMed article(s) citing the expression level of this target are as follows:</p> <p>Boster Bio's internal QC testing used:</p> <p>Immunohistochemistry (Paraffin-embedded Section), 0.5-1ug/ml, Human, Rat, Mouse, By Heat</p> <p>Western blot, 0.1-0.5ug/ml, Human, Rat, Mouse</p>

Anti-VEGFD/FIGF Antibody (PA1332) Images



Anti-VEGFD antibody, PA1332, Western blotting
Lane 1: SW620 Cell Lysate
Lane 2: COLO320 Cell Lysate
Lane 3: 6T-CEM Cell Lysate
Lane 4: HT1080 Cell Lysate

2 Publications Citing This Product

1. PubMed ID: 10.1016/j.lfs.2018.01.021, Defining the molecular signatures of human right heart failure
2. PubMed ID: 27211072, VEGF-D-enhanced lymph node metastasis of ovarian cancer is reversed by vesicular stomatitis virus matrix protein

Visit bosterbio.com/anti-vegfd-antibody-pa1332-boster.html to see all 2 publications.

Submit a product review to Biocompare.com

Submit a review of this product to Biocompare.com to receive a \$20 Amazon.com giftcard! Your reviews help your fellow scientists make the right decisions. Thank you for your contribution.



Anti-VEGFD/FIGF Antibody