

## Anti-SFTPA1 Antibody

Catalog Number: PA1347

### About SFTPA1

Surfactant protein A is an innate immune system collectin. The gene encoding SP-A map to mouse chromosome 14.1. Surfactant protein-A, which plays a role in innate host defense in the lung, is also expressed in the Eustachian tube. We report that the frequency of specific surfactant protein-A haplotypes and genotypes differs between children with recurrent otitis media compared with a control population.

### Overview

Product Name	Anti-SFTPA1 Antibody
Reactive Species	Human, Rat
Description	Boster Bio Anti-SFTPA1 Antibody catalog # PA1347. Tested in WB applications. This antibody reacts with Human, Rat.
Application	WB
Clonality	Polyclonal
Formulation	Each vial contains 50% glycerol, 0.9% NaCl, 0.2% Na <sub>2</sub> HPO <sub>4</sub> , 0.02% NaN <sub>3</sub> .
Storage Instructions	At -20°C for one year and at 4°C for one month from date of receipt. Avoid repeated freezing and thawing.
Host	Rabbit
Uniprot ID	Q8IWL2

### Technical Details

Immunogen	A synthetic peptide corresponding to a sequence at the C-terminus of human SFTPA1, different from the rat sequence by two amino acids.
Predicted Reactive Species	Hamster
Recommended Detection Systems	Boster recommends Enhanced Chemiluminescent Kit with anti-Rabbit IgG (EK1002) for Western blot.
Cross Reactivity	No cross-reactivity with other proteins
Isotype	Rabbit IgG
Form	Liquid
Concentration	0.5-1mg/ml, actual concentration vary by lot. Use suggested dilution ratio to decide dilution procedure.

Purification	Immunogen affinity purified.
Suggested Dilutions	<p>Dilute the sample so that the expected range of concentrations fall within the detection range of this kit.</p> <p>If the expected range of concentration is unknown, a pilot test should be conducted to decide the optimal dilution ratio for your samples.</p> <p>Some PubMed article(s) citing the expression level of this target are as follows:</p> <p>Boster Bio's internal QC testing used:</p> <p>Western blot, 0.1-0.5ug/ml, Human, Rat</p>

## Anti-SFTPA1 Antibody (PA1347) Images

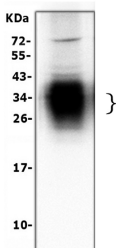


Figure 1. Western blot analysis of SFTPA1 using anti-SFTPA1 antibody (PA1347).

Electrophoresis was performed on a 5-20% SDS-PAGE gel at 70V (Stacking gel) / 90V (Resolving gel) for 2-3 hours. The sample well of each lane was loaded with 50ug of sample under reducing conditions.

Lane 1: rat lung tissue lysates,

After Electrophoresis, proteins were transferred to a Nitrocellulose membrane at 150mA for 50-90 minutes. Blocked the membrane with 5% Non-fat Milk/ TBS for 1.5 hour at RT. The membrane was incubated with rabbit anti-SFTPA1 antigen affinity purified polyclonal antibody (Catalog # PA1347) at 0.5 ug/mL overnight at 4°C, then washed with TBS-0.1%Tween 3 times with 5 minutes each and probed with a goat anti-rabbit IgG-HRP secondary antibody at a dilution of 1:10000 for 1.5 hour at RT. The signal is developed using an Enhanced Chemiluminescent detection (ECL) kit (Catalog # EK1002) with Tanon 5200 system. A specific band was detected for SFTPA1 at approximately 26-35KD. The expected band size for SFTPA1 is at 26KD.

## 3 Publications Citing This Product

1. PubMed ID: 23671638, Wu Y, You H, Ma P, Li L, Yuan Y, Li J, Ye X, Liu X, Yao H, Chen R, Lai K, Yang X. Plos One. 2013 May 9;8(5):E62827. Doi: 10.1371/Journal.Pone.0062827. Print 2013. Role Of Transient Receptor Potential Ion Channels And Evoked Levels Of Neuropeptides...

2. PubMed ID: 24596465, Alterations in the endometrium of rats, rabbits, and?Macaca mulatta?that received an implantation of copper/low-density polyethylene nanocomposite

3. PubMed ID: 26640562, Effects of bone marrow-derived mesenchymal stem cells transfected with survivin on pulmonary fibrosis in mice

Visit [bosterbio.com/anti-sftpa1-antibody-pa1347-boster.html](http://bosterbio.com/anti-sftpa1-antibody-pa1347-boster.html) to see all 3 publications.

## Submit a product review to Biocompare.com

Submit a review of this product to Biocompare.com to receive a \$20 Amazon.com giftcard! Your reviews help your fellow scientists make the right decisions. Thank you for your contribution.



Anti-SFTPA1 Antibody