

## Anti-Annexin A2/ANXA2 Antibody

Catalog Number: PA1348

### About ANXA2

Annexin A2 also known as annexin II is a protein that in humans is encoded by the ANXA2 gene. The ANXA2 gene has three pseudogenes located on chromosomes 4, 9 and 10, respectively. Multiple alternatively spliced transcript variants encoding different isoforms have been found for this gene. This protein is a member of the annexin family. Members of this calcium-dependent phospholipid-binding protein family play a role in the regulation of cellular growth and in signal transduction pathways. This protein functions as an autocrine factor which heightens osteoclast formation and bone resorption. Richard et al. (1994) presented an integration of the physical, expression, and genetic maps of human chromosome 15. They placed the ANXA2 gene in their region IV, i.e., 15q21-q22, thus confirming the previous localization.

### Overview

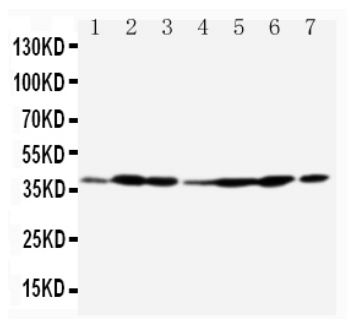
Product Name	Anti-Annexin A2/ANXA2 Antibody
Reactive Species	Human, Mouse, Rat
Description	Boster Bio Anti-Annexin A2/ANXA2 Antibody catalog # PA1348. Tested in IHC, WB applications. This antibody reacts with Human, Mouse, Rat.
Application	IHC, WB
Clonality	Polyclonal
Formulation	Each vial contains 5mg BSA, 0.9mg NaCl, 0.2mg Na <sub>2</sub> HPO <sub>4</sub> , 0.05mg Thimerosal, 0.05mg NaN <sub>3</sub> .
Storage Instructions	Store at -20°C for one year from date of receipt. After reconstitution, at 4°C for one month. It can also be aliquotted and stored frozen at -20°C for six months. Avoid repeated freeze-thaw cycles.
Host	Rabbit
Uniprot ID	P07355

### Technical Details

Immunogen	A synthetic peptide corresponding to a sequence in the middle region of human Annexin A2, different from the rat sequence by one amino acid.
Predicted Reactive Species	Hamster
Recommended Detection Systems	Boster recommends Enhanced Chemiluminescent Kit with anti-Rabbit IgG (EK1002) for Western blot, and HRP Conjugated anti-Rabbit IgG Super Vision Assay Kit (SV0002-1) for IHC(P) and IHC(F).
Cross Reactivity	No cross-reactivity with other proteins
Isotype	Rabbit IgG
Form	Lyophilized

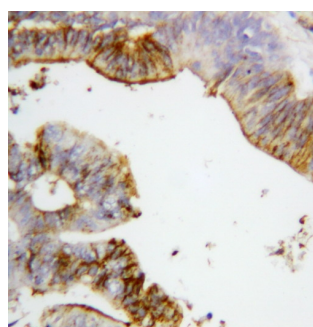
Concentration	Adding 0.2 ml of distilled water will yield a concentration of 500 ug/ml.
Purification	Immunogen affinity purified.
Suggested Dilutions	<p>Dilute the sample so that the expected range of concentrations fall within the detection range of this kit.</p> <p>If the expected range of concentration is unknown, a pilot test should be conducted to decide the optimal dilution ratio for your samples.</p> <p>Some PubMed article(s) citing the expression level of this target are as follows:</p> <p>Boster Bio's internal QC testing used:</p> <p>Immunohistochemistry (Frozen Section), 0.5-1ug/ml, Human, Mouse, Rat, -</p> <p>Immunohistochemistry (Paraffin-embedded Section), 0.5-1ug/ml, Human, Mouse, Rat, By Heat</p> <p>Western blot, 0.1-0.5ug/ml, Human, Mouse, Rat</p>

## Anti-Annexin A2/ANXA2 Antibody (PA1348) Images



Anti-Annexin A2 antibody, PA1348, Western blotting

Lane 1: Rat Testis Tissue Lysate  
Lane 2: Rat Lung Tissue Lysate  
Lane 3: Rat Ovary Tissue Lysate  
Lane 4: MCF-7 Cell Lysate  
Lane 5: SMMC Cell Lysate  
Lane 6: A549 Cell Lysate  
Lane 7: JURKAT Cell Lysate



Anti-Annexin A2 antibody, PA1348, IHC(P)  
IHC(P): Human Intestinal Cancer Tissue

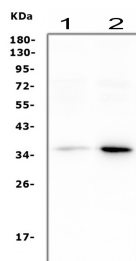


Figure 3. Western blot analysis of Annexin A2 using anti-Annexin A2 antibody (PA1348).

Electrophoresis was performed on a 5-20% SDS-PAGE gel at 70V (Stacking gel) / 90V (Resolving gel) for 2-3 hours. The sample well of each lane was loaded with 50ug of sample under reducing conditions.

Lane 1: mouse spleen tissue lysates

Lane 2: mouse NIH/3T3 whole cell lysates

After Electrophoresis, proteins were transferred to a Nitrocellulose membrane at 150mA for 50-90 minutes. Blocked the membrane with 5% Non-fat Milk/ TBS for 1.5 hour at RT. The membrane was incubated with rabbit anti-Annexin A2 antigen affinity purified polyclonal antibody (Catalog # PA1348) at 0.5 ug/mL overnight at 4°C, then washed with TBS-0.1%Tween 3 times with 5 minutes each and probed with a goat anti-rabbit IgG-HRP secondary antibody at a dilution of 1:10000 for 1.5 hour at RT. The signal is developed using an Enhanced Chemiluminescent detection (ECL) kit (Catalog # EK1002) with Tanon 5200 system. A specific band was detected for Annexin A2 at approximately 36KD. The expected band size for Annexin A2 is at 39KD.

## 1 Publications Citing This Product

1. PubMed ID: 22202185, Zhu J, Zou W, Jia G, Zhou H, Hu Y, Peng M, Chen H, Jin M. J Proteomics. 2012 Mar 16;75(6):1732-41. Doi: 10.1016/J.Jprot.2011.12.012. Epub 2011 Dec 20. Analysis Of Cellular Proteome Alterations In Porcine Alveolar Macrophage Cells Infected With 200...

Visit [bosterbio.com/anti-annexin-a2-antibody-pa1348-boster.html](http://bosterbio.com/anti-annexin-a2-antibody-pa1348-boster.html) to see all 1 publications.

## Submit a product review to Biocompare.com

Submit a review of this product to Biocompare.com to receive a \$20 Amazon.com giftcard! Your reviews help your fellow scientists make the right decisions. Thank you for your contribution.



Anti-Annexin A2/ANXA2 Antibody