

Anti-IL1 beta/IL1B Antibody

Catalog Number: PA1351

About IL1b

Interleukin-1 beta (IL-1beta) also known as catabolin, is a cytokine protein that in humans is encoded by the IL1B gene, which localizes to the long arm of chromosome at position 2q13-2q21 between two fragile sites. Interleukin 1 (IL-1) is a protein with several biological activities regulating host defense and immune responses.² The human IL-1 family plays an important role in the pathogenesis of many diseases and functions as a key mediator of the host response to various infectious, inflammatory, and immunologic challenges.

Overview

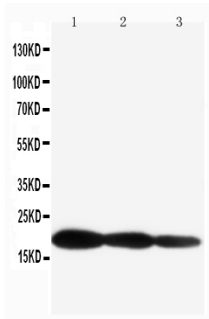
| | |
|----------------------|-------------------------------------------------------------------------------------------------------------------------------------------------------------------------------------------------------|
| Product Name | Anti-IL1 beta/IL1B Antibody |
| Reactive Species | Mouse, Rat |
| Description | Boster Bio Anti- IL1 beta /IL1B Antibody catalog # PA1351. Tested in WB applications. This antibody reacts with Mouse, Rat. |
| Application | WB |
| Clonality | Polyclonal |
| Formulation | Each vial contains 5mg BSA, 0.9mg NaCl, 0.2mg Na2HPO4, 0.05mg Thimerosal, 0.05mg NaN3. |
| Storage Instructions | Store at -20°C for one year from date of receipt. After reconstitution, at 4°C for one month. It can also be aliquotted and stored frozen at -20°C for six months. Avoid repeated freeze-thaw cycles. |
| Host | Rabbit |
| Uniprot ID | P10749 |

Technical Details

| | |
|-------------------------------|----------------------------------------------------------------------------------------------------------------------------------------------------|
| Immunogen | A synthetic peptide corresponding to a sequence at the C-terminus of mouse IL-1 beta, different from the related rat sequence by four amino acids. |
| Predicted Reactive Species | Chicken |
| Recommended Detection Systems | Boster recommends Enhanced Chemiluminescent Kit with anti-Rabbit IgG (EK1002) for Western blot. |
| Cross Reactivity | No cross-reactivity with other proteins |
| Isotype | Rabbit IgG |
| Form | Lyophilized |
| Concentration | Adding 0.2 ml of distilled water will yield a concentration of 500 ug/ml. |

| | |
|---------------------|-----------------------------------------------------------------------------------------------------------------------------------------------------------------------------------------------------------------------------------------------------------------------------------------------------------------------------------------------------------------------------------------------------------------------------------------------------------|
| Purification | Immunogen affinity purified. |
| Suggested Dilutions | <p>Dilute the sample so that the expected range of concentrations fall within the detection range of this kit.</p> <p>If the expected range of concentration is unknown, a pilot test should be conducted to decide the optimal dilution ratio for your samples.</p> <p>Some PubMed article(s) citing the expression level of this target are as follows:</p> <p>Boster Bio's internal QC testing used:</p> <p>Western blot, 0.1-0.5ug/ml, Mouse, Rat</p> |

Anti-IL1 beta/IL1B Antibody (PA1351) Images



Anti-IL-1 beta antibody, PA1351, Western blotting
Lane 1: Recombinant Mouse IL-1 beta Protein 10ng
Lane 2: Recombinant Mouse IL-1 beta Protein 5ng
Lane 3: Recombinant Mouse IL-1 beta Protein 2.5ng

11 Publications Citing This Product

1. PubMed ID: 10.1016/j.molimm.2017.12.018, Caspases are key regulators of inflammatory and innate immune responses mediated by TLR3 in vivo
2. PubMed ID: 33130049, Ghoneim ME, Abdallah DM, Shebl AM, El-Abhar HS. The interrupted cross-talk of inflammatory and oxidative stress trajectories signifies the effect of artesunate against hepatic ischemia/reperfusion-induced inflammasomopathy. Toxicol Appl Pharmacol. 2020 Oct 29
3. PubMed ID: 25338658, Antenatal exposure of maternal secondhand smoke (SHS) increases fetal lung expression of RAGE and induces RAGE-mediated pulmonary inflammation

Visit bosterbio.com/anti-il-1-beta-antibody-pa1351-boster.html to see all 11 publications.

Submit a product review to Biocompare.com

Submit a review of this product to Biocompare.com to receive a \$20 Amazon.com giftcard! Your reviews help your fellow scientists make the right decisions. Thank you for your contribution.



Anti-IL1 beta/IL1B Antibody