

## Anti-IL8/CXCL8 Antibody

Catalog Number: PA1353

### About CXCL8

Interleukin-8 (IL-8) is a chemokine produced by macrophages and other cell types such as epithelial cells. It is also synthesized by endothelial cells, which store IL-8 in their storage vesicles, the Weibel-Palade bodies. In humans, the interleukin-8 protein is encoded by the IL8 gene. Interleukin-8 (IL8) is a member of the CXC chemokine family (Hull et al., 2001). IL-8 is believed to play a role in the pathogenesis of bronchiolitis, a common respiratory tract disease caused by viral infection. This gene and other ten members of the CXC chemokine gene family form a chemokine gene cluster in a region mapped to chromosome 4q. The genes for IL8 have been co-localized on a 335-kb genomic fragment.

### Overview

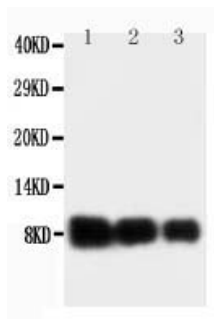
|                      |   |
|----------------------|---|
| Product Name         | Anti-IL8/CXCL8 Antibody   |
| Reactive Species     | Human   |
| Description          | Boster Bio Anti-IL8/CXCL8 Antibody catalog # PA1353. Tested in IHC, WB applications. This antibody reacts with Human.   |
| Application          | IHC, WB   |
| Clonality            | Polyclonal  |
| Formulation          | Each vial contains 5mg BSA, 0.9mg NaCl, 0.2mg Na <sub>2</sub> HPO <sub>4</sub> , 0.05mg Thimerosal, 0.05mg NaN <sub>3</sub> .   |
| Storage Instructions | Store at -20°C for one year from date of receipt. After reconstitution, at 4°C for one month. It can also be aliquotted and stored frozen at -20°C for six months. Avoid repeated freeze-thaw cycles. |
| Host                 | Rabbit  |
| Uniprot ID           | P10145  |

### Technical Details

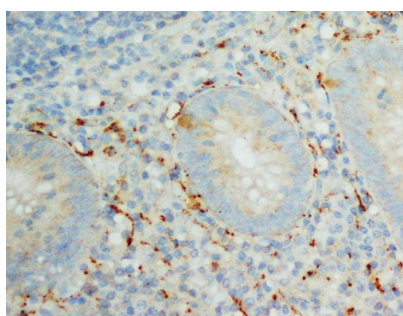
|                               |  |
|-------------------------------|--|
| Immunogen                     | A synthetic peptide corresponding to a sequence at the C-terminus of human IL8.  |
| Predicted Reactive Species    | Chicken  |
| Recommended Detection Systems | Boster recommends Enhanced Chemiluminescent Kit with anti-Rabbit IgG (EK1002) for Western blot, and HRP Conjugated anti-Rabbit IgG Super Vision Assay Kit (SV0002-1) for IHC(P). |
| Cross Reactivity              | No cross-reactivity with other proteins  |
| Isotype                       | Rabbit IgG   |
| Form                          | Lyophilized  |
| Concentration                 | Adding 0.2 ml of distilled water will yield a concentration of 500 ug/ml.  |

|                     |  |
|---------------------|--|
| Purification        | Immunogen affinity purified.   |
| Suggested Dilutions | <p>Dilute the sample so that the expected range of concentrations fall within the detection range of this kit.</p> <p>If the expected range of concentration is unknown, a pilot test should be conducted to decide the optimal dilution ratio for your samples.</p> <p>Some PubMed article(s) citing the expression level of this target are as follows:</p> <p>Boster Bio's internal QC testing used:</p> <p>Immunohistochemistry (Paraffin-embedded Section), 0.5-1ug/ml, Human, By Heat</p> <p>Western blot, 0.1-0.5ug/ml, Human</p> |

## Anti-IL8/CXCL8 Antibody (PA1353) Images



Anti-IL-8 antibody, PA1353, Western blotting  
Lane 1: Recombinant Human IL-18 Protein 10ng  
Lane 2: Recombinant Human IL-18 Protein 5ng  
Lane 3: Recombinant Human IL-18 Protein 2.5ng



Anti-IL-8 antibody, PA1353, IHC(P)  
IHC(P): Human Appendicitis Tissue

## 46 Publications Citing This Product

1. PubMed ID: 26949603, Inhibition of zymosan-induced cytokine and chemokine expression in human corneal fibroblasts by triptolide
2. PubMed ID: 28726780, FOXQ1 regulates senescence-associated inflammation via activation of SIRT1 expression
3. PubMed ID: 25317156, Neuroprotective effect of pretreatment with ganoderma lucidum in cerebral ischemia/reperfusion injury in rat hippocampus

Visit [bosterbio.com/anti-il-8-antibody-pa1353-boster.html](http://bosterbio.com/anti-il-8-antibody-pa1353-boster.html) to see all 46 publications.

## Submit a product review to Biocompare.com

Submit a review of this product to Biocompare.com to receive a \$20 Amazon.com giftcard! Your reviews help your fellow scientists make the right decisions. Thank you for your contribution.



Anti-IL8/CXCL8 Antibody