

## Anti-Presenilin 2/PSEN2 Antibody

Catalog Number: PA1358

### About PSEN2

Presenilin-2 is a protein that in humans is encoded by the PSEN2 gene. Kovacs et al. (1996) demonstrated that the expression patterns of PS1 and PS2 in the brain are extremely similar to each other and that messages for both are primarily detectable in neuronal populations. Immunochemical analyses indicated that PS1 and PS2 are similar in size and localize to similar intracellular compartments (endoplasmic reticulum and Golgi complex). Li et al. (1997) demonstrated that wildtype PS1 and PS2 are localized to the nuclear membrane, its associated interphase kinetochores, and the centrosomes. In melanocytic cells PSEN2 gene expression may be regulated by MITF.

### Overview

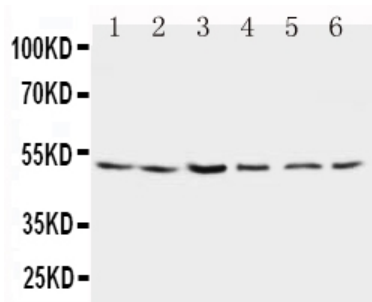
Product Name	Anti-Presenilin 2/PSEN2 Antibody
Reactive Species	Human, Mouse, Rat
Description	Boster Bio Anti-Presenilin 2/PSEN2 Antibody catalog # PA1358. Tested in IHC, WB applications. This antibody reacts with Human, Mouse, Rat.
Application	IHC, WB
Clonality	Polyclonal
Formulation	Each vial contains 5mg BSA, 0.9mg NaCl, 0.2mg Na <sub>2</sub> HPO <sub>4</sub> , 0.05mg Thimerosal, 0.05mg NaN <sub>3</sub> .
Storage Instructions	Store at -20°C for one year from date of receipt. After reconstitution, at 4°C for one month. It can also be aliquotted and stored frozen at -20°C for six months. Avoid repeated freeze-thaw cycles.
Host	Rabbit
Uniprot ID	P49810

### Technical Details

Immunogen	A synthetic peptide corresponding to a sequence at the N-terminus of human Presenilin 2, different from the related mouse and rat sequences by two amino acids.
Predicted Reactive Species	Monkey
Recommended Detection Systems	Boster recommends Enhanced Chemiluminescent Kit with anti-Rabbit IgG (EK1002) for Western blot, and HRP Conjugated anti-Rabbit IgG Super Vision Assay Kit (SV0002-1) for IHC(P).
Cross Reactivity	No cross-reactivity with other proteins
Isotype	Rabbit IgG
Form	Lyophilized
Concentration	Adding 0.2 ml of distilled water will yield a concentration of 500 ug/ml.

Purification	Immunogen affinity purified.
Suggested Dilutions	<p>Dilute the sample so that the expected range of concentrations fall within the detection range of this kit.</p> <p>If the expected range of concentration is unknown, a pilot test should be conducted to decide the optimal dilution ratio for your samples.</p> <p>Some PubMed article(s) citing the expression level of this target are as follows:</p> <p>Boster Bio's internal QC testing used:</p> <p>Immunohistochemistry (Paraffin-embedded Section), 0.5-1ug/ml, Human, Rat, Mouse, By Heat</p> <p>Western blot, 0.1-0.5ug/ml, Human, Rat, Mouse</p>

## Anti-Presenilin 2/PSEN2 Antibody (PA1358) Images



Anti-Presenilin 2 antibody, PA1358, Western blotting

Lane 1: Rat Brain Tissue Lysate

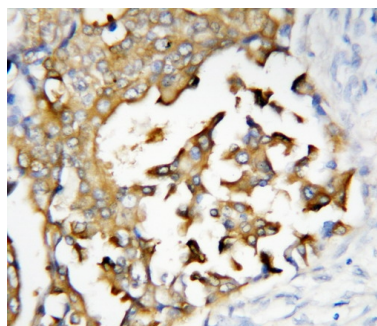
Lane 2: Rat Brain Tissue Lysate

Lane 3: MCF-7 Cell Lysate

Lane 4: HELA Cell Lysate

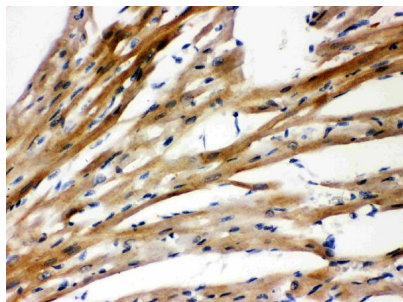
Lane 5: SMMC Cell Lysate

Lane 6: CEM Cell Lysate



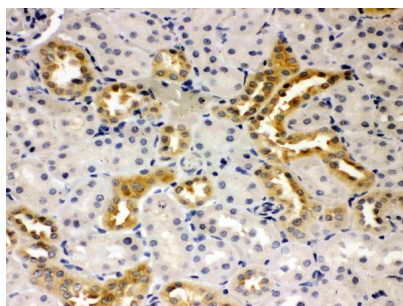
Anti-Presenilin 2 antibody, PA1358, IHC(P)

IHC(P): Human Mammary Cancer Tissue



Anti-Presenilin 2 antibody, PA1358, IHC(P)

IHC(P): Rat Cardiac Muscle Tissue



Anti-Presenilin 2 antibody, PA1358, IHC(P)

IHC(P): Rat Kidney Tissue

## Submit a product review to Biocompare.com

Submit a review of this product to Biocompare.com to receive a \$20 Amazon.com giftcard! Your reviews help your fellow scientists make the right decisions. Thank you for your contribution.

