

## Anti-CD62L/SELL Antibody

Catalog Number: PA1359

### About Sell

L-selectin, also known as CD62L, is a cell adhesion molecule found on leukocytes. It belongs to the selectin family of proteins, which recognize sialylated carbohydrate groups. It is cleaved by ADAM17. SELL (L-selectin) is a cell surface component that is a member of a family of adhesion/homing receptors which play important roles in leukocyte-endothelial cell interactions. The molecule is composed of multiple domains: one homologous to lectins, one to epidermal growth factor, and two to the consensus repeat units found in C3/C4 binding proteins. L-selectin acts as a "homing receptor" for leukocytes to enter secondary lymphoid tissues via high endothelial venules. Ligands present on endothelial cells will bind to leukocyte expressing L-selectin, slowing leukocyte trafficking through the blood, and facilitating entry into a secondary lymphoid organ at that point.

### Overview

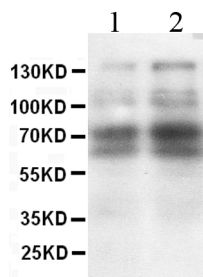
Product Name	Anti-CD62L/SELL Antibody
Reactive Species	Mouse, Rat
Description	Boster Bio Anti-CD62L/SELL Antibody catalog # PA1359. Tested in WB applications. This antibody reacts with Mouse, Rat.
Application	WB
Clonality	Polyclonal
Formulation	Each vial contains 5mg BSA, 0.9mg NaCl, 0.2mg Na <sub>2</sub> HPO <sub>4</sub> , 0.05mg Thimerosal, 0.05mg NaN <sub>3</sub> .
Storage Instructions	Store at -20°C for one year from date of receipt. After reconstitution, at 4°C for one month. It can also be aliquotted and stored frozen at -20°C for six months. Avoid repeated freeze-thaw cycles.
Host	Rabbit
Uniprot ID	P18337

### Technical Details

Immunogen	A synthetic peptide corresponding to a sequence in the middle region of mouse L-selectin, identical to the related rat sequence.
Predicted Reactive Species	Hamster
Recommended Detection Systems	Boster recommends Enhanced Chemiluminescent Kit with anti-Rabbit IgG (EK1002) for Western blot.
Cross Reactivity	No cross-reactivity with other proteins
Isotype	Rabbit IgG

Form	Lyophilized
Concentration	Adding 0.2 ml of distilled water will yield a concentration of 500 ug/ml.
Purification	Immunogen affinity purified.
Suggested Dilutions	<p>Dilute the sample so that the expected range of concentrations fall within the detection range of this kit.</p> <p>If the expected range of concentration is unknown, a pilot test should be conducted to decide the optimal dilution ratio for your samples.</p> <p>Some PubMed article(s) citing the expression level of this target are as follows:</p> <p>Boster Bio's internal QC testing used:</p> <p>Western blot, 0.1-0.5ug/ml, Mouse, Rat</p>

## Anti-CD62L/SELL Antibody (PA1359) Images



Anti-L-selectin antibody, PA1359, Western blotting  
All lanes: Anti L-selectin (PA1359) at 0.5ug/ml  
Lane 1: Rat Spleen Tissue Lysate at 50ug  
Lane 2: Mouse Spleen Tissue Lysate at 50ug  
Predicted bind size: 42KD  
Observed bind size: 70KD

## 1 Publications Citing This Product

1. PubMed ID: 25822027, HIV-1 Nef and Vpu Interfere with L-Selectin (CD62L) Cell Surface Expression To Inhibit Adhesion and Signaling in Infected CD4+ T Lymphocytes

Visit [bosterbio.com/anti-l-selectin-antibody-pa1359-boster.html](http://bosterbio.com/anti-l-selectin-antibody-pa1359-boster.html) to see all 1 publications.

## Submit a product review to Biocompare.com

Submit a review of this product to Biocompare.com to receive a \$20 Amazon.com giftcard! Your reviews help your fellow scientists make the right decisions. Thank you for your contribution.



Anti-CD62L/SELL Antibody