

Anti-TNF beta/LTA Antibody

Catalog Number: PA1361

About LTA

Lymphotoxin (previously known as tumor necrosis factor-beta) is a lymphokine cytokine. It is a protein that is produced by Th1 type T-cells and induces vascular endothelial cells to change their surface adhesion molecules to allow phagocytic cells to bind to them. Lymphotoxin is homologous to Tumor Necrosis Factor beta, but secreted by T-cells. It is paracrine due to the small amounts produced. The effects are similar to TNF-alpha, but TNF-beta is also important for the development of lymphoid organs. Nedwin et al. (1985) found that TNFA and TNFB are closely linked on chromosome 6. Study of hybrid cells made with rearranged human chromosome 6 showed that both TNFA and TNFB map to the 6p23-q12 segment.

Overview

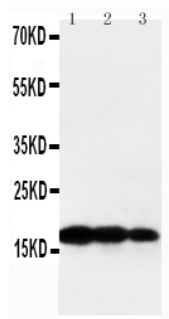
Product Name	Anti-TNF beta/LTA Antibody
Reactive Species	Human
Description	Boster Bio Anti-TNF beta/LTA Antibody catalog # PA1361. Tested in WB applications. This antibody reacts with Human.
Application	WB
Clonality	Polyclonal
Formulation	Each vial contains 5mg BSA, 0.9mg NaCl, 0.2mg Na2HPO4, 0.05mg Thimerosal, 0.05mg NaN3.
Storage Instructions	Store at -20°C for one year from date of receipt. After reconstitution, at 4°C for one month. It can also be aliquotted and stored frozen at -20°C for six months. Avoid repeated freeze-thaw cycles.
Host	Rabbit
Uniprot ID	P01374

Technical Details

Immunogen	A synthetic peptide corresponding to a sequence in the middle region of human TNF beta, different from the related mouse sequence by one amino acid.
Predicted Reactive Species	Hamster
Recommended Detection Systems	Boster recommends Enhanced Chemiluminescent Kit with anti-Rabbit IgG (EK1002) for Western blot.
Cross Reactivity	No cross-reactivity with other proteins
Isotype	Rabbit IgG
Form	Lyophilized

Concentration	Adding 0.2 ml of distilled water will yield a concentration of 500 ug/ml.
Purification	Immunogen affinity purified.
Suggested Dilutions	<p>Dilute the sample so that the expected range of concentrations fall within the detection range of this kit.</p> <p>If the expected range of concentration is unknown, a pilot test should be conducted to decide the optimal dilution ratio for your samples.</p> <p>Some PubMed article(s) citing the expression level of this target are as follows:</p> <p>Boster Bio's internal QC testing used:</p> <p>Western blot, 0.1-0.5ug/ml, Human</p>

Anti-TNF beta/LTA Antibody (PA1361) Images



Anti-TNF beta antibody, PA1361, Western blotting
Lane 1: Recombinant Human TNF beta Protein 10ng
Lane 2: Recombinant Human TNF beta Protein 5ng
Lane 3: Recombinant Human TNF beta Protein 2.5ng

Submit a product review to Biocompare.com

Submit a review of this product to Biocompare.com to receive a \$20 Amazon.com giftcard! Your reviews help your fellow scientists make the right decisions. Thank you for your contribution.



Anti-TNF beta/LTA Antibody