

## Anti-CD80 Antibody

Catalog Number: PA1365

### About CD80

Cluster of Differentiation 80 (also CD80 and B7-1) is a protein found on activated B cells and monocytes that provides a costimulatory signal necessary for T cell activation and survival. It is the ligand for two different proteins on the T cell surface: CD28 (for autoregulation and intercellular association) and CTLA-4 (for attenuation of regulation and cellular disassociation). CD80 works in tandem with CD86 to prime T cells. The CD80 genes encode B7-1 which are structurally similar members of the immunoglobulin superfamily expressed on a variety of hematopoietic cell types. Reeves et al. (1997) stated that B7-1 and B7-2 provide a costimulatory signal to T cells by interacting with CD28 and CTLA4.

### Overview

Product Name	Anti-CD80 Antibody
Reactive Species	Human
Description	Boster Bio Anti-CD80 Antibody catalog # PA1365. Tested in WB applications. This antibody reacts with Human.
Application	WB
Clonality	Polyclonal
Formulation	Each vial contains 4 mg Trehalose, 0.9 mg NaCl and 0.2 mg Na <sub>2</sub> HPO <sub>4</sub> .
Storage Instructions	Store at -20°C for one year from date of receipt. After reconstitution, at 4°C for one month. It can also be aliquotted and stored frozen at -20°C for six months. Avoid repeated freeze-thaw cycles.
Host	Rabbit
Uniprot ID	P33681

### Technical Details

Immunogen	A synthetic peptide corresponding to a sequence at the N-terminus of human CD80.
Predicted Reactive Species	Horse
Recommended Detection Systems	Boster recommends Enhanced Chemiluminescent Kit with anti-Rabbit IgG (EK1002) for Western blot.
Cross Reactivity	No cross-reactivity with other proteins
Isotype	Rabbit IgG
Form	Lyophilized
Concentration	Adding 0.2 ml of distilled water will yield a concentration of 500 ug/ml.

Purification	Immunogen affinity purified.
Suggested Dilutions	<p>Dilute the sample so that the expected range of concentrations fall within the detection range of this kit.</p> <p>If the expected range of concentration is unknown, a pilot test should be conducted to decide the optimal dilution ratio for your samples.</p> <p>Some PubMed article(s) citing the expression level of this target are as follows:</p> <p>Boster Bio's internal QC testing used:</p> <p>Western blot, 0.1-0.5ug/ml, Human</p>

## Anti-CD80 Antibody (PA1365) Images

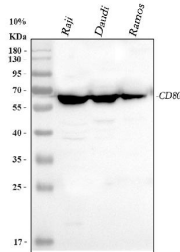


Figure 1. Western blot analysis of CD80 using anti-CD80 antibody (PA1365).

Electrophoresis was performed on a 5-20% SDS-PAGE gel at 70V (Stacking gel) / 90V (Resolving gel) for 2-3 hours. The sample well of each lane was loaded with 30 ug of sample under reducing conditions.

Lane 1: human Raji whole cell lysates,

Lane 2: human Daudi whole cell lysates,

Lane 3: human Ramos whole cell lysates.

After electrophoresis, proteins were transferred to a nitrocellulose membrane at 150 mA for 50-90 minutes. Blocked the membrane with 5% non-fat milk/TBS for 1.5 hour at RT. The membrane was incubated with rabbit anti-CD80 antigen affinity purified polyclonal antibody (Catalog # PA1365) at 0.5 ug/mL overnight at 4°C, then washed with TBS-0.1%Tween 3 times with 5 minutes each and probed with a goat anti-rabbit IgG-HRP secondary antibody at a dilution of 1:5000 for 1.5 hour at RT. The signal is developed using an Enhanced Chemiluminescent detection (ECL) kit (Catalog # EK1002) with Tanon 5200 system. A specific band was detected for CD80 at approximately 30-70 kDa. The expected band size for CD80 is at 33 kDa.

## 1 Publications Citing This Product

1. PubMed ID: 22728711, Du Hy, Dong Lh, Zhao Bj, Fu J, Wang Qq, Chen F, Ou L, Li N, Sun X, Tang Zm, Song Hf. Acta Pharmacol Sin. 2012 Aug;33(8):1047-54. Doi: 10.1038/Aps.2012.54. Epub 2012 Jun 25. Immunostimulatory And Anti-Neoplasm Effects Of A Novel Palindrome Cpg Olig...

Visit [bosterbio.com/anti-cd80-antibody-pa1365-boster.html](http://bosterbio.com/anti-cd80-antibody-pa1365-boster.html) to see all 1 publications.

## Submit a product review to Biocompare.com

Submit a review of this product to Biocompare.com to receive a \$20 Amazon.com giftcard! Your reviews help your fellow scientists make the right decisions. Thank you for your contribution.



Anti-CD80 Antibody