

## Anti-5HT2A Receptor/HTR2A Antibody

Catalog Number: PA1373

### About HTR2A

The mammalian HTR2A (5-HT2A receptor) is a subtype of the 5-HT2 receptor that belongs to the serotonin receptor family and is a G protein-coupled receptor (GPCR). This is the main excitatory receptor subtype among the GPCRs for serotonin (5-HT), although 5-HT2A may also have an inhibitory effect on certain areas such as the visual cortex and the orbit frontal cortex. This receptor was given importance first as the target of psychedelic drugs like LSD. Later it came back to prominence because it was also found to be mediating, at least partly, the action of many antipsychotic drugs, especially the atypical ones. 5-HT2A also happens to be a necessary receptor for the spread of the human polyoma virus called JC virus. Sparkes et al. (1991) concluded that the gene is located on 13q14-q21 in man and on chromosome 14 in the mouse.

### Overview

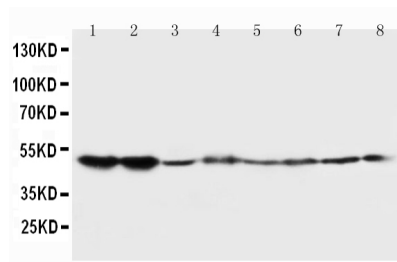
Product Name	Anti-5HT2A Receptor/HTR2A Antibody
Reactive Species	Human, Mouse, Rat
Description	Boster Bio Anti-5HT2A Receptor/HTR2A Antibody catalog # PA1373. Tested in IHC, WB applications. This antibody reacts with Human, Mouse, Rat.
Application	IHC, WB
Clonality	Polyclonal
Formulation	Each vial contains 5mg BSA, 0.9mg NaCl, 0.2mg Na2HPO4, 0.05mg Thimerosal, 0.05mg NaN3.
Storage Instructions	Store at -20°C for one year from date of receipt. After reconstitution, at 4°C for one month. It can also be aliquotted and stored frozen at -20°C for six months. Avoid repeated freeze-thaw cycles.
Host	Rabbit
Uniprot ID	P28223

### Technical Details

Immunogen	A synthetic peptide corresponding to a sequence at the C-terminus of human 5HT2A Receptor, different from the mouse sequence by one amino acid.
Predicted Reactive Species	Rabbit
Recommended Detection Systems	Boster recommends Enhanced Chemiluminescent Kit with anti-Rabbit IgG (EK1002) for Western blot, and HRP Conjugated anti-Rabbit IgG Super Vision Assay Kit (SV0002-1) for IHC(P).
Cross Reactivity	No cross-reactivity with other proteins
Isotype	Rabbit IgG
Form	Lyophilized

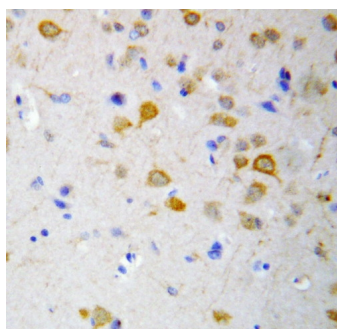
Concentration	Adding 0.2 ml of distilled water will yield a concentration of 500 ug/ml.
Purification	Immunogen affinity purified.
Suggested Dilutions	<p>Dilute the sample so that the expected range of concentrations fall within the detection range of this kit.</p> <p>If the expected range of concentration is unknown, a pilot test should be conducted to decide the optimal dilution ratio for your samples.</p> <p>Some PubMed article(s) citing the expression level of this target are as follows:</p> <p>Boster Bio's internal QC testing used:</p> <p>Immunohistochemistry (Paraffin-embedded Section), 0.5-1ug/ml, Mouse, Rat, Human, By Heat</p> <p>Western blot, 0.1-0.5ug/ml, Human, Mouse, Rat</p>

## Anti-5HT2A Receptor/HTR2A Antibody (PA1373) Images



Anti-5HT2A Receptor antibody, PA1373, Western blotting

Lane 1: Rat Brain Tissue Lysate  
Lane 2: Rat Brain Tissue Lysate  
Lane 3: Mouse Brain Tissue Lysate  
Lane 4: Mouse Brain Tissue Lysate  
Lane 5: U87 Cell Lysate  
Lane 6: SMMC Cell Lysate  
Lane 7: HT1080 Cell Lysate  
Lane 8: COLO320 Cell Lysate



Anti-5HT2A Receptor antibody, PA1373, IHC(P)  
IHC(P): Rat Brain Tissue

## Submit a product review to Biocompare.com

Submit a review of this product to Biocompare.com to receive a \$20 Amazon.com giftcard! Your reviews help your fellow scientists make the right decisions. Thank you for your contribution.



Anti-5HT2A Receptor/HTR2A Antibody