

Anti-Insulin-like growth factor I IGF1 Antibody

Catalog Number: PA1374

About IGF1

Insulin-like growth factor 1 (IGF-1) also known as somatomedin C or mechano growth factor is a protein that in humans is encoded by the IGF1 gene. IGF-1 is a hormone similar in molecular structure to insulin. It plays an important role in childhood growth and continues to have anabolic effects in adults. A synthetic analog of IGF-1, mecasermin is used for the treatment of growth failure. IGF-1 consists of 70 amino acids in a single chain with three intramolecular disulfide bridges. IGF-1 has a molecular weight of 7649 daltons. Justice et al. (1990) placed the mouse IGF1 gene on chromosome 10.

Overview

Product Name	Anti-Insulin-like growth factor I IGF1 Antibody
Reactive Species	Human, Mouse, Rat
Description	Boster Bio Anti-Insulin-like growth factor I IGF1 Antibody catalog # PA1374. Tested in IHC, WB applications. This antibody reacts with Human, Mouse, Rat.
Application	IHC, WB
Clonality	Polyclonal
Formulation	Each vial contains 4 mg Trehalose, 0.9 mg NaCl and 0.2 mg Na ₂ HPO ₄ .
Storage Instructions	Store at -20°C for one year from date of receipt. After reconstitution, at 4°C for one month. It can also be aliquotted and stored frozen at -20°C for six months. Avoid repeated freeze-thaw cycles.
Host	Rabbit
Uniprot ID	P05019

Technical Details

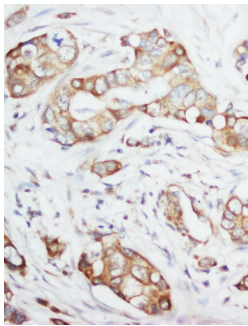
Immunogen	A synthetic peptide corresponding to a sequence in the middle region of human IGF-1, different from the mouse and rat sequences by one amino acid.
Predicted Reactive Species	Hamster
Recommended Detection Systems	Boster recommends Enhanced Chemiluminescent Kit with anti-Rabbit IgG (EK1002) for Western blot, and HRP Conjugated anti-Rabbit IgG Super Vision Assay Kit (SV0002-1) for IHC(P).
Cross Reactivity	No cross-reactivity with other proteins
Isotype	Rabbit IgG
Form	Lyophilized
Concentration	Adding 0.2 ml of distilled water will yield a concentration of 500 ug/ml.

Purification	Immunogen affinity purified.
Suggested Dilutions	<p>Dilute the sample so that the expected range of concentrations fall within the detection range of this kit.</p> <p>If the expected range of concentration is unknown, a pilot test should be conducted to decide the optimal dilution ratio for your samples.</p> <p>Some PubMed article(s) citing the expression level of this target are as follows:</p> <p>Boster Bio's internal QC testing used:</p> <p>Immunohistochemistry (Paraffin-embedded Section), 0.5-1ug/ml, Human, Rat, Mouse, By Heat</p> <p>Western blot, 0.1-0.5ug/ml, Human</p>

Anti-Insulin-like growth factor I IGF1 Antibody (PA1374) Images



Anti-IGF-1 antibody, PA1374, Western blotting
WB: Recombinant Human IGF-1 Protein 2.5ng



Anti-IGF-1 antibody, PA1374, IHC(P)
IHC(P): Human Mammary Cancer Tissue

10 Publications Citing This Product

1. PubMed ID: 33617969, Peng MF, Tian S, Song YG, Li CX, Miao MS, Zhen-Ren, Li M. Effects of total flavonoids from Eucommia ulmoides Oliv. leaves on polycystic ovary syndrome with insulin resistance model rats induced by letrozole combined with a high-fat diet. J Ethnopharmacol. 2021 Feb
2. PubMed ID: 27779666, Effects of the IGF-1/PTEN/Akt/FoxO signaling pathway on male reproduction in rats subjected to water immersion and restraint stress
3. PubMed ID: 27833113, Elucidating a molecular mechanism that the deterioration of porcine meat quality responds to increased cortisol based on transcriptome sequencing

Visit bosterbio.com/anti-igf-1-antibody-pa1374-boster.html to see all 10 publications.

Submit a product review to Biocompare.com

Submit a review of this product to Biocompare.com to receive a \$20 Amazon.com giftcard! Your reviews help your fellow scientists make the right decisions. Thank you for your contribution.



Anti-Insulin-like growth factor I IGF1 Antibody