

Anti-IL1 alpha/IL1A Antibody

Catalog Number: PA1375

About IL1a

Interleukin-1 alpha (IL-1alpha) is a protein that in humans is encoded by the IL1A gene. The protein encoded by this gene is a cytokine of the interleukin-1 family. Interleukin-1 alpha possesses a wide spectrum of metabolic, physiological, haematopoietic activities, and plays one of the central roles in the regulation of the immune responses. It binds to the interleukin-1 receptor. Silver et al. (1990) showed that the mouse IL1a and IL1b genes are contained in a genomic fragment of about 70 kb. Further studies suggested that IL1b lies 5-prime to IL1a, that the 2 genes are oriented in the same direction, and that they are separated by about 50 kb.

Overview

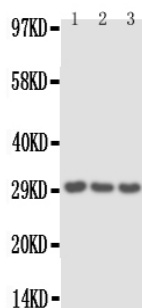
Product Name	Anti-IL1 alpha/IL1A Antibody
Reactive Species	Mouse
Description	Boster Bio Anti-IL1 alpha/IL1A Antibody catalog # PA1375. Tested in IHC, WB applications. This antibody reacts with Mouse.
Conjugate	FITC
Application	IHC, WB
Clonality	Monoclonal BAM-10
Formulation	Each vial contains 5mg BSA, 0.9mg NaCl, 0.2mg Na2HPO4, 0.05mg Thimerosal, 0.05mg NaN3.
Storage Instructions	The product should be stored undiluted at 4°C and should be protected from prolonged exposure to light. Do not freeze.
Host	Hamster
Uniprot ID	P01582

Technical Details

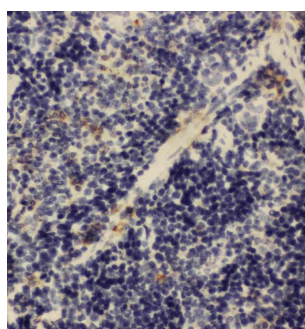
Immunogen	A synthetic peptide corresponding to a sequence at the C-terminus of mouse IL-1 alpha.
Predicted Reactive Species	Hamster
Recommended Detection Systems	Boster recommends Enhanced Chemiluminescent Kit with anti-Rabbit IgG (EK1002) for Western blot, and HRP Conjugated anti-Rabbit IgG Super Vision Assay Kit (SV0002-1) for IHC(P).
Cross Reactivity	No cross reactivity with other proteins
Form	Lyophilized
Concentration	Add 0.2ml of distilled water will yield a concentration of 500ug/ml.

Purification	Immunogen Affinity Purified
Suggested Dilutions	<p>Dilute the sample so that the expected range of concentrations fall within the detection range of this kit.</p> <p>If the expected range of concentration is unknown, a pilot test should be conducted to decide the optimal dilution ratio for your samples.</p> <p>Some PubMed article(s) citing the expression level of this target are as follows:</p> <p>Boster Bio's internal QC testing used:</p> <p>Immunohistochemistry (Paraffin-embedded Section), 0.5-1ug/ml, Mouse, By Heat</p> <p>Western blot, 0.1-0.5ug/ml, Mouse</p>

Anti-IL1 alpha/IL1A Antibody (PA1375) Images



Anti-IL-1 alpha antibody, PA1375, Western blotting
All lanes: Anti IL-1 alpha (PA1375) at 0.5ug/ml
Lane 1: Mouse Spleen Tissue Lysate at 50ug
Lane 2: Mouse Thymus Tissue Lysate at 50ug
Lane 3: HEPA Whole Cell Lysate at 40ug
Predicted bind size: 30KD
Observed bind size: 30KD



Anti-IL-1 alpha antibody, PA1375, IHC(P)
IHC(P): Mouse Spleen Tissue

Submit a product review to Biocompare.com

Submit a review of this product to Biocompare.com to receive a \$20 Amazon.com giftcard! Your reviews help your fellow scientists make the right decisions. Thank you for your contribution.



Anti-IL1 alpha/IL1A Antibody