

Anti-MEK1/MAP2K1 Antibody

Catalog Number: PA1376

About MAP2K1

Dual specificity mitogen-activated protein kinase kinase 1 is an enzyme that in humans is encoded by the MAP2K1 gene. The protein encoded by this gene is a member of the dual specificity protein kinase family, which acts as a mitogen-activated protein (MAP) kinase kinase. MAP kinases, also known as extracellular signal-regulated kinases (ERKs), act as an integration point for multiple biochemical signals. This protein kinase lies upstream of MAP kinases and stimulates the enzymatic activity of MAP kinases upon activation by a wide variety of extra- and intracellular signals. As an essential component of the MAP kinase signal transduction pathway, this kinase is involved in many cellular processes such as proliferation, differentiation, transcription regulation and development. Rampoldi et al. (1997) localized the MAP2K1 gene to 15q22.1-q22.33.

Overview

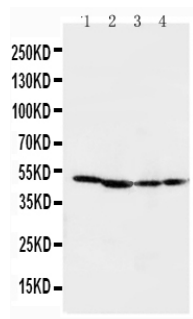
Product Name	Anti-MEK1/MAP2K1 Antibody
Reactive Species	Human, Mouse, Rat
Description	Boster Bio Anti-MEK1/MAP2K1 Antibody catalog # PA1376. Tested in IHC, ICC, WB applications. This antibody reacts with Human, Mouse, Rat.
Application	IHC, ICC, WB
Clonality	Polyclonal
Formulation	Each vial contains 5mg BSA, 0.9mg NaCl, 0.2mg Na ₂ HPO ₄ , 0.05mg Thimerosal, 0.05mg NaN ₃ .
Storage Instructions	Store at -20°C for one year from date of receipt. After reconstitution, at 4°C for one month. It can also be aliquotted and stored frozen at -20°C for six months. Avoid repeated freeze-thaw cycles.
Host	Rabbit
Uniprot ID	Q02750

Technical Details

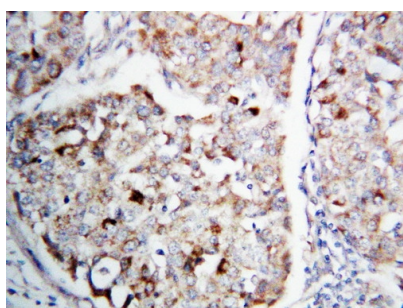
Immunogen	A synthetic peptide corresponding to a sequence at the C-terminus of human MEK1, identical to the related mouse and rat sequences.
Predicted Reactive Species	Hamster
Recommended Detection Systems	Boster recommends Enhanced Chemiluminescent Kit with anti-Rabbit IgG (EK1002) for Western blot, and HRP Conjugated anti-Rabbit IgG Super Vision Assay Kit (SV0002-1) for IHC(P) and ICC.
Cross Reactivity	No cross-reactivity with other proteins
Isotype	Rabbit IgG
Form	Lyophilized

Concentration	Adding 0.2 ml of distilled water will yield a concentration of 500 ug/ml.
Purification	Immunogen affinity purified.
Suggested Dilutions	<p>Dilute the sample so that the expected range of concentrations fall within the detection range of this kit.</p> <p>If the expected range of concentration is unknown, a pilot test should be conducted to decide the optimal dilution ratio for your samples.</p> <p>Some PubMed article(s) citing the expression level of this target are as follows:</p> <p>Boster Bio's internal QC testing used:</p> <p>Immunocytochemistry , 0.5-1ug/ml, Human, -</p> <p>Immunohistochemistry (Paraffin-embedded Section), 0.5-1ug/ml, Human, Rat, Mouse, By Heat</p> <p>Western blot, 0.1-0.5ug/ml, Human, Rat, Mouse</p>

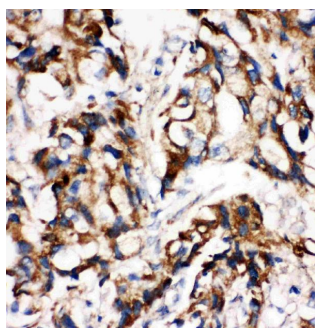
Anti-MEK1/MAP2K1 Antibody (PA1376) Images



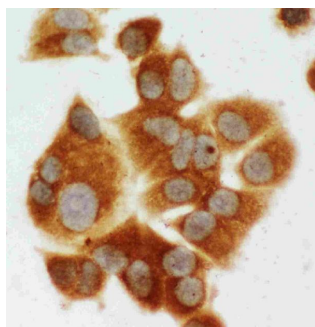
Anti-MEK1 antibody, PA1376, Western blotting
Lane 1: Rat Skeletal Muscle Tissue Lysate
Lane 2: Rat Kidney Tissue Lysate
Lane 3: CEM Cell Lysate
Lane 4: COLO20 Cell Lysate



Anti-MEK1 antibody, PA1376, IHC(P)
IHC(P): Human Lung Cancer Tissue



Anti-MEK1 antibody, PA1376, IHC(P)
IHC(P): Human Mammary Cancer Tissue



Anti-MEK1 antibody, PA1376, ICC
ICC: MCF-7 Cell

Submit a product review to Biocompare.com

Submit a review of this product to Biocompare.com to receive a \$20 Amazon.com giftcard! Your reviews help your fellow scientists make the right decisions. Thank you for your contribution.



Anti-MEK1/MAP2K1 Antibody