

Anti-MEK3/MAP2K3 Antibody

Catalog Number: PA1377-1

About MAP2K3

Dual specificity mitogen-activated protein kinase kinase 3 is an enzyme that in humans is encoded by the MAP2K3 gene. The protein encoded by this gene is a dual specificity protein kinase that belongs to the MAP kinase kinase family. This kinase is activated by mitogenic and environmental stress, and participates in the MAP kinase-mediated signaling cascade. It phosphorylates and thus activates MAPK14/p38-MAPK. This kinase can be activated by insulin, and is necessary for the expression of glucose transporter. Expression of RAS oncogene is found to result in the accumulation of the active form of this kinase, which thus leads to the constitutive activation of MAPK14, and confers oncogenic transformation of primary cells. Rampoldi et al. (1997) localized the MAP2K3 gene to 17q11.2.

Overview

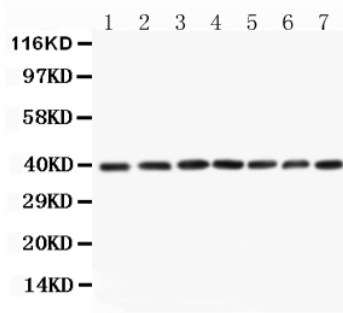
Product Name	Anti-MEK3/MAP2K3 Antibody
Reactive Species	Human, Mouse, Rat
Description	Boster Bio Anti-MEK3/MAP2K3 Antibody catalog # PA1377-1. Tested in WB applications. This antibody reacts with Human, Mouse, Rat.
Application	WB
Clonality	Polyclonal
Formulation	Each vial contains 5mg BSA, 0.9mg NaCl, 0.2mg Na ₂ HPO ₄ , 0.05mg Thimerosal, 0.05mg NaN ₃ .
Storage Instructions	Store at -20°C for one year from date of receipt. After reconstitution, at 4°C for one month. It can also be aliquotted and stored frozen at -20°C for six months. Avoid repeated freeze-thaw cycles.
Host	Rabbit
Uniprot ID	P46734

Technical Details

Immunogen	A synthetic peptide corresponding to a sequence at the N-terminus of human MEK3, identical to the related mouse and rat sequences.
Predicted Reactive Species	Hamster
Recommended Detection Systems	Boster recommends Enhanced Chemiluminescent Kit with anti-Rabbit IgG (EK1002) for Western blot.
Cross Reactivity	No cross-reactivity with other proteins
Isotype	Rabbit IgG
Form	Lyophilized

Concentration	Adding 0.2 ml of distilled water will yield a concentration of 500 ug/ml.
Purification	Immunogen affinity purified.
Suggested Dilutions	<p>Dilute the sample so that the expected range of concentrations fall within the detection range of this kit.</p> <p>If the expected range of concentration is unknown, a pilot test should be conducted to decide the optimal dilution ratio for your samples.</p> <p>Some PubMed article(s) citing the expression level of this target are as follows:</p> <p>Boster Bio's internal QC testing used:</p> <p>Western blot, 0.1-0.5ug/ml, Human, Rat, Mouse</p>

Anti-MEK3/MAP2K3 Antibody (PA1377-1) Images



Anti-MEK3 antibody, PA1377-1, All Western blotting
All lanes: Anti-MAP2K3(PA1377-1) at 0.5ug/ml
Lane 1: Rat Skeletal Muscle Tissue Lysate at 40ug
Lane 2: Rat Kidney Tissue Lysate at 40ug
Lane 3: Rat Spleen Tissue Lysate at 40ug
Lane 4: HELA Whole Cell Lysate at 40ug
Lane 5: A549 Whole Cell Lysate at 40ug
Lane 6: JURKAT Whole Cell Lysate at 40ug
Lane 7: CEM Whole Cell Lysate at 40ug
Predicted bind size: 39KD
Observed bind size: 39KD

1 Publications Citing This Product

1. PubMed ID: 24112539, Xu G, Zhang Y, Wei J, Jia W, Ge Z, Zhang Z, Liu X. BMC Cancer. 2013 Oct 10;13:469. Doi: 10.1186/1471-2407-13-469. MicroRNA-21 Promotes Hepatocellular Carcinoma HepG2 Cell Proliferation Through Repression Of Mitogen-Activated Protein Kinase-Kinase 3.

Visit bosterbio.com/anti-mek3-antibody-pa1377-1-boster.html to see all 1 publications.

Submit a product review to Biocompare.com

Submit a review of this product to Biocompare.com to receive a \$20 Amazon.com giftcard! Your reviews help your fellow scientists make the right decisions. Thank you for your contribution.



Anti-MEK3/MAP2K3 Antibody