

## Anti-Macrophage Inflammatory Protein 1 beta/CCL4 Antibody

Catalog Number: PA1379

### About Ccl4

Chemokine (C-C motif) ligand 4, also known as CCL4, is a protein which in humans is encoded by the CCL4 gene. It is a CC chemokine with specificity for CCR5 receptors. It is a chemoattractant for natural killer cells, monocytes and a variety of other immune cells. CCL4 is a major HIV-suppressive factor produced by CD8+ T cells. Performing-low memory CD8+ T cells that normally synthesize MIP-1-beta. Modi et al. (1991) assigned the SCYA4 gene to a slightly more distal location than had Irving et al. (1990): 17q21-q23 rather than 17q11-q21.

### Overview

Product Name	Anti-Macrophage Inflammatory Protein 1 beta/CCL4 Antibody
Reactive Species	Mouse
Description	Boster Bio Anti-Macrophage Inflammatory Protein 1 beta/CCL4 Antibody catalog # PA1379. Tested in WB applications. This antibody reacts with Mouse.
Application	WB
Clonality	Polyclonal
Formulation	Each vial contains 5mg BSA, 0.9mg NaCl, 0.2mg Na2HPO4, 0.05mg Thimerosal, 0.05mg NaN3.
Storage Instructions	Store at -20°C for one year from date of receipt. After reconstitution, at 4°C for one month. It can also be aliquotted and stored frozen at -20°C for six months. Avoid repeated freeze-thaw cycles.
Host	Rabbit
Uniprot ID	P14097

### Technical Details

Immunogen	A synthetic peptide corresponding to a sequence at the C-terminus of mouse CCL4.
Predicted Reactive Species	Rabbit
Recommended Detection Systems	Boster recommends Enhanced Chemiluminescent Kit with anti-Rabbit IgG (EK1002) for Western blot.
Cross Reactivity	No cross-reactivity with other proteins
Isotype	Rabbit IgG
Form	Lyophilized
Concentration	Adding 0.2 ml of distilled water will yield a concentration of 500 ug/ml.
Purification	Immunogen affinity purified.

**Suggested Dilutions**

Dilute the sample so that the expected range of concentrations fall within the detection range of this kit.

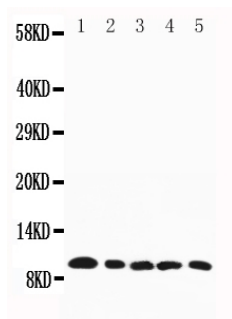
If the expected range of concentration is unknown, a pilot test should be conducted to decide the optimal dilution ratio for your samples.

Some PubMed article(s) citing the expression level of this target are as follows:

Boster Bio's internal QC testing used:

Western blot, 0.1-0.5ug/ml, Mouse

## Anti-Macrophage Inflammatory Protein 1 beta/CCL4 Antibody (PA1379) Images



All lanes: Anti-CCL4, PA1379  
Lane 1: Mouse Spleen Tissue Lysate  
Lane 2: Mouse Cardiac Muscle Tissue Lysate  
Lane 3: Mouse Lung Tissue Lysate  
Lane 4: Mouse Kidney Tissue Lysate  
Lane 5: Mouse Skeletal Muscle Tissue Lysate

### Submit a product review to Biocompare.com

Submit a review of this product to Biocompare.com to receive a \$20 Amazon.com giftcard! Your reviews help your fellow scientists make the right decisions. Thank you for your contribution.



Anti-Macrophage Inflammatory Protein 1 beta/CCL4 Antibody