

Anti-IP10/CXCL10 Antibody

Catalog Number: PA1396

About CXCL10

C-X-C motif chemokine 10 (CXCL10), also known as Interferon gamma-induced protein 10 kDa (IP-10) or small-inducible cytokine B10, is a protein that in humans is encoded by the CXCL10 gene. It is a small cytokine belonging to the CXC chemokine family. The gene for CXCL10 is located on human chromosome 4 in a cluster among several other CXC chemokines. Luster et al. (1987) reported the isolation of an interferon-inducible gene that encodes a 98-amino acid protein called IP10. The chemokine IFN-gamma-inducible protein 10 (IP-10; CXCL10), a CXC chemokine, and its receptor, CXCR3, were found to be overexpressed in lymph node cells of EAMG rats. IP10 inhibits bone marrow colony formation, has antitumor activity in vivo, is a chemoattractant for human monocytes and T cells, and promotes T cell adhesion to endothelial cells.

Overview

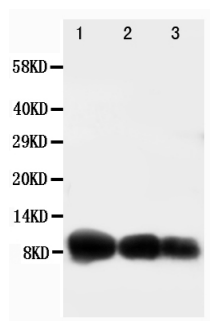
Product Name	Anti-IP10/CXCL10 Antibody
Reactive Species	Human
Description	Boster Bio Anti-IP10/CXCL10 Antibody catalog # PA1396. Tested in IHC, WB applications. This antibody reacts with Human.
Application	IHC, WB
Clonality	Polyclonal
Formulation	Each vial contains 5mg BSA, 0.9mg NaCl, 0.2mg Na ₂ HPO ₄ , 0.05mg Thimerosal, 0.05mg NaN ₃ .
Storage Instructions	Store at -20°C for one year from date of receipt. After reconstitution, at 4°C for one month. It can also be aliquotted and stored frozen at -20°C for six months. Avoid repeated freeze-thaw cycles.
Host	Rabbit
Uniprot ID	P02778

Technical Details

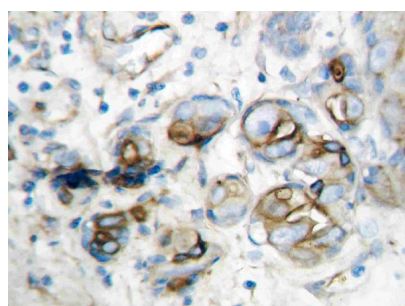
Immunogen	A synthetic peptide corresponding to a sequence at the C-terminus of human IP10.
Predicted Reactive Species	Monkey
Recommended Detection Systems	Boster recommends Enhanced Chemiluminescent Kit with anti-Rabbit IgG (EK1002) for Western blot, and HRP Conjugated anti-Rabbit IgG Super Vision Assay Kit (SV0002-1) for IHC(P).
Cross Reactivity	No cross-reactivity with other proteins
Isotype	Rabbit IgG
Form	Lyophilized

Concentration	Adding 0.2 ml of distilled water will yield a concentration of 500 ug/ml.
Purification	Immunogen affinity purified.
Suggested Dilutions	<p>Dilute the sample so that the expected range of concentrations fall within the detection range of this kit.</p> <p>If the expected range of concentration is unknown, a pilot test should be conducted to decide the optimal dilution ratio for your samples.</p> <p>Some PubMed article(s) citing the expression level of this target are as follows:</p> <p>Boster Bio's internal QC testing used:</p> <p>Immunohistochemistry (Paraffin-embedded Section), 0.5-1ug/ml, Human, By Heat</p> <p>Western blot, 0.1-0.5ug/ml, Human</p>

Anti-IP10/CXCL10 Antibody (PA1396) Images



Anti-IP10 antibody, PA1396, Western blotting
Lane 1: Recombinant Human CXCL10 Protein 10ng
Lane 2: Recombinant Human CXCL10 Protein 5ng
Lane 3: Recombinant Human CXCL10 Protein 2.5ng



Anti-IP10 antibody, PA1396, IHC(P)
IHC(P): Human Mammary Cancer Tissue

2 Publications Citing This Product

1. PubMed ID: 33345267, Qin XJ, Lin X, Xue G, Fan HL, Wang HY, Wu JF, Pei D. CXCL10 is a potential biomarker and associated with immune infiltration in human papillary thyroid cancer. Biosci Rep. 2020 Dec 21; BSR20203459. doi: 10.1042/ BSR20203459. Epub ahead of print. PMID: 33345267.

2. PubMed ID: 28387899, A correlation study between gene polymorphism of Th cell expressed chemokine receptor CXCR3 and its ligand levels with HCV infection prognosis

Visit [bosterbio.com/anti-ip-10-cxcl10-antibody-pa1396-boster.html](https://www.bosterbio.com/anti-ip-10-cxcl10-antibody-pa1396-boster.html) to see all 2 publications.

Submit a product review to Biocompare.com

Submit a review of this product to Biocompare.com to receive a \$20 Amazon.com giftcard! Your reviews help your fellow scientists make the right decisions. Thank you for your contribution.



Anti-IP10/CXCL10 Antibody