

## Anti-PI 3 Kinase p85 alpha/PIK3R1 Antibody

Catalog Number: PA1410

### About PIK3R1

Phosphatidylinositol 3-kinase regulatory subunit alpha is an enzyme that in humans is encoded by the PIK3R1 gene. Its gene is mapped to 5q13. the bovine PI3K p85 subunit consists of 2 closely related proteins, p85-alpha and p85-beta. They cloned cDNAs encoding both p85 subunits, each of which is a 724-amino acid polypeptide. Phosphatidylinositol 3-kinase plays an important role in the metabolic actions of insulin, and a mutation in this gene has been associated with insulin resistance.

### Overview

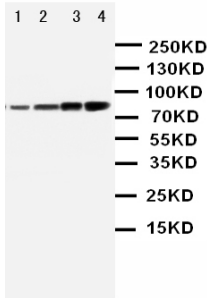
Product Name	Anti-PI 3 Kinase p85 alpha/PIK3R1 Antibody
Reactive Species	Human, Mouse, Rat
Description	Boster Bio Anti-PI 3 Kinase p85 alpha/PIK3R1 Antibody catalog # PA1410. Tested in WB applications. This antibody reacts with Human, Mouse, Rat.
Application	WB
Clonality	Polyclonal
Formulation	Each vial contains 5mg BSA, 0.9mg NaCl, 0.2mg Na2HPO4, 0.05mg Thimerosal, 0.05mg NaN3.
Storage Instructions	Store at -20°C for one year from date of receipt. After reconstitution, at 4°C for one month. It can also be aliquotted and stored frozen at -20°C for six months. Avoid repeated freeze-thaw cycles.
Host	Rabbit
Uniprot ID	P27986

### Technical Details

Immunogen	A synthetic peptide corresponding to a sequence at the N-terminus of human PI 3 Kinase p85 alpha, identical to the related rat and mouse sequences.
Predicted Reactive Species	Hamster
Recommended Detection Systems	Boster recommends Enhanced Chemiluminescent Kit with anti-Rabbit IgG (EK1002) for Western blot.
Cross Reactivity	No cross-reactivity with other proteins
Isotype	Rabbit IgG
Form	Lyophilized
Concentration	Adding 0.2 ml of distilled water will yield a concentration of 500 ug/ml.

Purification	Immunogen affinity purified.
Suggested Dilutions	<p>Dilute the sample so that the expected range of concentrations fall within the detection range of this kit.</p> <p>If the expected range of concentration is unknown, a pilot test should be conducted to decide the optimal dilution ratio for your samples.</p> <p>Some PubMed article(s) citing the expression level of this target are as follows:</p> <p>Boster Bio's internal QC testing used:</p> <p>Western blot, 0.1-0.5ug/ml, Human, Rat, Mouse</p>

## Anti-PI 3 Kinase p85 alpha/PIK3R1 Antibody (PA1410) Images



Anti-PI 3 Kinase p85 alpha antibody, PA1410, Western blotting  
Lane 1: MCF-7 Cell Lysate  
Lane 2: HELA Cell Lysate  
Lane 3: COLO-320 whole cell lysate  
Lane 4: SW620 Cell Lysate

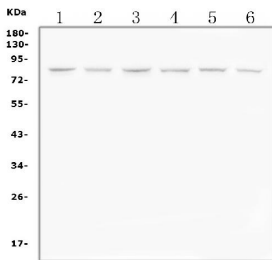


Figure 2. Western blot analysis of PI 3 Kinase p85 alpha using anti-PI 3 Kinase p85 alpha antibody (PA1410). Electrophoresis was performed on a 5-20% SDS-PAGE gel at 70V (Stacking gel) / 90V (Resolving gel) for 2-3 hours. The sample well of each lane was loaded with 50ug of sample under reducing conditions.  
Lane 1: rat brain tissue lysates  
Lane 2: rat lung tissue lysates  
Lane 3: rat PC-12 whole cell lysates  
Lane 4: mouse brain tissue lysates  
Lane 5: mouse HEPA1-6 whole cell lysates  
Lane 6: mouse RAW246.7 whole cell lysates  
After Electrophoresis, proteins were transferred to a Nitrocellulose membrane at 150mA for 50-90 minutes. Blocked the membrane with 5% Non-fat Milk/ TBS for 1.5 hour at RT. The membrane was incubated with rabbit anti-PI 3 Kinase p85 alpha antigen affinity purified polyclonal antibody (Catalog # PA1410) at 0.5 ug/mL overnight at 4°C, then washed with TBS-0.1%Tween 3 times with 5 minutes each and probed with a goat anti-rabbit IgG-HRP secondary antibody at a dilution of 1:10000 for 1.5 hour at RT. The signal is developed using an Enhanced Chemiluminescent detection (ECL) kit (Catalog # EK1002) with Tanon 5200 system. A specific band was detected for PI 3 Kinase p85 alpha at approximately 85KD. The expected band size for PI 3 Kinase p85 alpha is at 85KD.

## 2 Publications Citing This Product

1. PubMed ID: -, Ren,K.,Chi,X.,Wu,T.et al.Preliminary Study on the Antibacterial and Cytotoxic Effects of the Synthetic New Peptide NJP9-A.Int J Pept Res Ther(2021).<https://doi.org/10.1007/s10989-021-10246-4>
2. PubMed ID: 28752099, Expressions Profiles of the Proteins Associated with Carbohydrate Metabolism in Rat Liver Regeneration

Visit [bosterbio.com/anti-pi-3-kinase-p85-alpha-antibody-pa1410-boster.html](https://bosterbio.com/anti-pi-3-kinase-p85-alpha-antibody-pa1410-boster.html) to see all 2 publications.

## Submit a product review to Biocompare.com

Submit a review of this product to Biocompare.com to receive a \$20 Amazon.com giftcard! Your



reviews help your fellow scientists make the right decisions. Thank you for your contribution.

### Anti-PI 3 Kinase p85 alpha/PIK3R1 Antibody