

Anti-Progesterone Receptor/PGR Antibody

Catalog Number: PA1413

About PGR

The progesterone receptor (PR) is an intracellular steroid receptor that specially binds progesterone in humans. PR has been a member of the steroid receptor superfamily. It is encoded by a single PGR gene residing on chromosome 11q22. The PGR gene uses separate promoters and translational start sites to produce 2 isoforms, PRA and PRB, which are identical except for an additional 165 amino acids present only in the N terminus of PRB. It can be observed in human breast tissues. The proteins function as dimeric molecules in nuclei to regulate the transcription of target genes in a ligand-responsive manner.

Overview

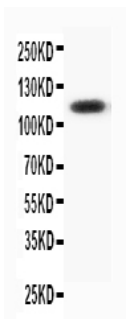
Product Name	Anti-Progesterone Receptor/PGR Antibody
Reactive Species	Human
Description	Boster Bio Anti-Progesterone Receptor/PGR Antibody catalog # PA1413. Tested in IHC, WB applications. This antibody reacts with Human.
Application	IHC, WB
Clonality	Polyclonal
Formulation	Each vial contains 5mg BSA, 0.9mg NaCl, 0.2mg Na ₂ HPO ₄ , 0.05mg Thimerosal, 0.05mg NaN ₃ .
Storage Instructions	Store at -20°C for one year from date of receipt. After reconstitution, at 4°C for one month. It can also be aliquotted and stored frozen at -20°C for six months. Avoid repeated freeze-thaw cycles.
Host	Rabbit
Uniprot ID	P06401

Technical Details

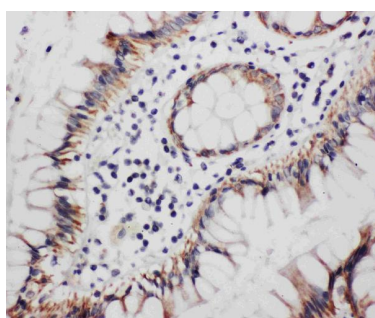
Immunogen	A synthetic peptide corresponding to a sequence in the middle region of human Progesterone Receptor, identical to the related rat and mouse sequences.
Predicted Reactive Species	Hamster
Recommended Detection Systems	Boster recommends Enhanced Chemiluminescent Kit with anti-Rabbit IgG (EK1002) for Western blot, and HRP Conjugated anti-Rabbit IgG Super Vision Assay Kit (SV0002-1) for IHC(P).
Cross Reactivity	No cross-reactivity with other proteins
Isotype	Rabbit IgG
Form	Lyophilized
Concentration	Adding 0.2 ml of distilled water will yield a concentration of 500 ug/ml.

Purification	Immunogen affinity purified.
Suggested Dilutions	<p>Dilute the sample so that the expected range of concentrations fall within the detection range of this kit.</p> <p>If the expected range of concentration is unknown, a pilot test should be conducted to decide the optimal dilution ratio for your samples.</p> <p>Some PubMed article(s) citing the expression level of this target are as follows:</p> <p>Boster Bio's internal QC testing used:</p> <p>Western blot, 0.1-0.5ug/ml, Human</p> <p>Immunohistochemistry (Paraffin-embedded Section), 0.5-1ug/ml, Human, By Heat</p>

Anti-Progesterone Receptor/PGR Antibody (PA1413) Images



Anti-Progesterone Receptor antibody, PA1413, Western blotting
WB: HELA Cell Lysate



Anti-Progesterone Receptor antibody, PA1413, IHC(P)
IHC(P): Human Rectal Cancer Tissue

1 Publications Citing This Product

1. PubMed ID: 22101081, Fu Y, Zhao Z, Wu Y, Wu K, Xu X, Liu Y, Tong C. J Ethnopharmacol. 2012 Jan 6;139(1):26-33. Doi: 10.1016/J.Jep.2011.08.077. Epub 2011 Nov 10. Therapeutic Mechanisms Of Tongmai Dasheng Tablet On Tripterygium Glycosides Induced Rat Model For Premature...

Visit bosterbio.com/anti-progesterone-receptor-antibody-pa1413-boster.html to see all 1 publications.

Submit a product review to Biocompare.com

Submit a review of this product to Biocompare.com to receive a \$20 Amazon.com giftcard! Your reviews help your fellow scientists make the right decisions. Thank you for your contribution.



Anti-Progesterone Receptor/PGR Antibody