

## Anti-Pleiotrophin/PTN Antibody

Catalog Number: PA1414

### About PTN

Pleiotrophin (PTN) also known as heparin-binding brain mitogen (HBBM) or heparin-binding growth factor 8 (HBGF-8) or neurite growth-promoting factor 1 (NEGF1) or heparin affinity regulatory peptide (HARP) or heparin binding growth associated molecule (HB-GAM) is a protein that in humans is encoded by the PTN gene. PTN is the first member of a family of developmentally regulated cytokines. The PTN gene is mapped to 7q33-q34. A mutant PTN that contained only the first N-terminal 40 amino acids was a dominant negative. Pleiotrophin is expressed in the central and peripheral nervous system and also in several non-neural tissues, notably lung, kidney, gut and bone. Pleiotrophin binds to cell-surface nucleolin as a low affinity receptor. This binding can inhibit HIV infection.

### Overview

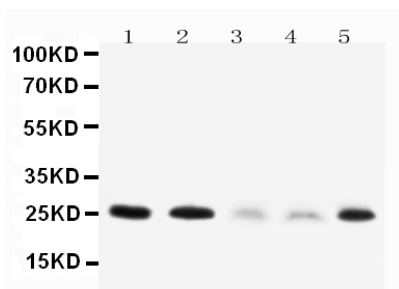
Product Name	Anti-Pleiotrophin/PTN Antibody
Reactive Species	Human, Mouse, Rat
Description	Boster Bio Anti-Pleiotrophin/PTN Antibody catalog # PA1414. Tested in IHC, WB applications. This antibody reacts with Human, Mouse, Rat.
Application	IHC, WB
Clonality	Polyclonal
Formulation	Each vial contains 5mg BSA, 0.9mg NaCl, 0.2mg Na <sub>2</sub> HPO <sub>4</sub> , 0.05mg Thimerosal, 0.05mg NaN <sub>3</sub> .
Storage Instructions	Store at -20°C for one year from date of receipt. After reconstitution, at 4°C for one month. It can also be aliquotted and stored frozen at -20°C for six months. Avoid repeated freeze-thaw cycles.
Host	Rabbit
Uniprot ID	P21246

### Technical Details

Immunogen	A synthetic peptide corresponding to a sequence at the C-terminus of human Pleiotrophin, identical to the related rat and mouse sequences.
Predicted Reactive Species	Hamster
Recommended Detection Systems	Boster recommends Enhanced Chemiluminescent Kit with anti-Rabbit IgG (EK1002) for Western blot, and HRP Conjugated anti-Rabbit IgG Super Vision Assay Kit (SV0002-1) for IHC(P).
Cross Reactivity	No cross-reactivity with other proteins
Isotype	Rabbit IgG
Form	Lyophilized

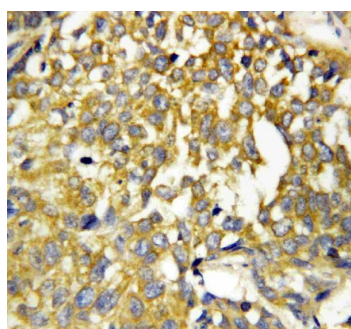
Concentration	Adding 0.2 ml of distilled water will yield a concentration of 500 ug/ml.
Purification	Immunogen affinity purified.
Suggested Dilutions	<p>Dilute the sample so that the expected range of concentrations fall within the detection range of this kit.</p> <p>If the expected range of concentration is unknown, a pilot test should be conducted to decide the optimal dilution ratio for your samples.</p> <p>Some PubMed article(s) citing the expression level of this target are as follows:</p> <p>Boster Bio's internal QC testing used:</p> <p>Immunohistochemistry (Paraffin-embedded Section), 0.5-1ug/ml, Human, Mouse, Rat, By Heat</p> <p>Western blot, 0.1-0.5ug/ml, Human, Rat, Mouse</p>

## Anti-Pleiotrophin/PTN Antibody (PA1414) Images



Anti-Pleiotrophin antibody, PA1414, Western blotting

Lane 1: Rat Brain Tissue Lysate  
Lane 2: Rat Kidney Tissue Lysate  
Lane 3: MCF-7 Cell Lysate  
Lane 4: HT1080 Cell Lysate  
Lane 5: SMMC Cell Lysate



Anti-Pleiotrophin antibody, PA1414, IHC(P)  
IHC(P): Human Mammary Cancer Tissue

## 1 Publications Citing This Product

1. PubMed ID: 28678802, miR-182 aids in receptive endometrium development in dairy goats by down-regulating PTN expression

Visit [bosterbio.com/anti-pleiotrophin-antibody-pa1414-boster.html](http://bosterbio.com/anti-pleiotrophin-antibody-pa1414-boster.html) to see all 1 publications.

## Submit a product review to Biocompare.com

Submit a review of this product to Biocompare.com to receive a \$20 Amazon.com giftcard! Your reviews help your fellow scientists make the right decisions. Thank you for your contribution.



Anti-Pleiotrophin/PTN Antibody