

Anti-Src Antibody

Catalog Number: PA1415

About SRC

Sarcoma (Scr) is a proto-oncogenic tyrosine kinase originally discovered by J. Michael Bishop and Harold E. Varmus. belongs to a family of non-receptor tyrosine kinases called Src family kinases. The human SRC protooncogene was assigned to chromosome 20. Its gene is mapped to 20q12-q13. The discovery of Src family proteins has been instrumental to the modern understanding of cancer as a disease where normally healthy cellular signalling has gone awry. This proto-oncogene may play a role in the regulation of embryonic development and cell growth.

Overview

Product Name	Anti-Src Antibody
Reactive Species	Human, Mouse, Rat
Description	Boster Bio Anti-Src Antibody catalog # PA1415. Tested in WB applications. This antibody reacts with Human, Mouse, Rat.
Application	WB
Clonality	Polyclonal JLT-12
Formulation	Each vial contains 5mg BSA, 0.9mg NaCl, 0.2mg Na2HPO4, 0.05mg Thimerosal, 0.05mg NaN3.
Storage Instructions	Store at -20°C for one year from date of receipt. After reconstitution, at 4°C for one month. It can also be aliquotted and stored frozen at -20°C for six months. Avoid repeated freeze-thaw cycles.
Host	Rabbit
Uniprot ID	P12931

Technical Details

Immunogen	A synthetic peptide corresponding to a sequence at the C-terminus of human Src, identical to the related rat and mouse sequences.
Predicted Reactive Species	Chicken
Recommended Detection Systems	Boster recommends Enhanced Chemiluminescent Kit with anti-Rabbit IgG (EK1002) for Western blot.
Cross Reactivity	No cross reactivity with other proteins
Form	Lyophilized
Concentration	Adding 0.2 ml of distilled water will yield a concentration of 500 ug/ml.
Purification	Immunogen affinity purified.

Suggested Dilutions

Dilute the sample so that the expected range of concentrations fall within the detection range of this kit.

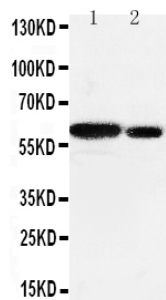
If the expected range of concentration is unknown, a pilot test should be conducted to decide the optimal dilution ratio for your samples.

Some PubMed article(s) citing the expression level of this target are as follows:

Boster Bio's internal QC testing used:

Western blot, 0.1-0.5ug/ml, Human, Rat, Mouse

Anti-Src Antibody (PA1415) Images



Anti-Src antibody, PA1415, Western blotting
Lane 1: Rat Testis Tissue Lysate
Lane 2: Rat Brain Tissue Lysate

2 Publications Citing This Product

1. PubMed ID: 25605242, Zhang Qq, Zhou DI, Lei Y, Zheng L, Chen Sx, Gou Hj, Gu QI, He Xd, Lan T, Qi CI, Li Jc, Ding Yq, Qiao L, Wang Lj. Oncotarget. 2015 Feb 20;6(5):3123-35. Slit2/Robo1 Signaling Promotes Intestinal Tumorigenesis Through Src-Mediated Activation Of The W...
2. PubMed ID: 29416654, Cui Y, Wu W, Lv P, Zhang J, Bai B, Cao W. Oncotarget. 2017 Dec 11;9(1):783-790. doi: 10.18632/oncotarget.23153. eCollection 2018 Jan 2. Down-regulation of long non-coding RNA ESCCAL_1 inhibits tumor growth of esophageal squamous cell carcinoma in ...

Visit bosterbio.com/anti-src-antibody-pa1415-boster.html to see all 2 publications.

Submit a product review to Biocompare.com

Submit a review of this product to Biocompare.com to receive a \$20 Amazon.com giftcard! Your reviews help your fellow scientists make the right decisions. Thank you for your contribution.



Anti-Src Antibody