

## Anti-Protein NDRG1 NDRG1 Antibody

Catalog Number: PA1416

### About NDRG1

Protein NDRG1 is a protein that in humans is encoded by the NDRG1 gene. It is a member of the N-myc downregulated gene family which belong to the alpha/beta hydrolase superfamily. The NDRG1 gene is mapped to chromosome 8q24. It has got a deduced 394 amino acid protein with a molecular mass of 43kD. NDRG1 is expressed in the cytoplasm and basolateral membranes of gut lumen surface epithelial cells. The protein appears to play a vital role in growth arrest and cell differentiation.

### Overview

Product Name	Anti-Protein NDRG1 NDRG1 Antibody
Reactive Species	Human
Description	Boster Bio Anti-Protein NDRG1 NDRG1 Antibody catalog # PA1416. Tested in IHC, WB applications. This antibody reacts with Human.
Application	IHC, WB
Clonality	Polyclonal
Formulation	Each vial contains 5mg BSA, 0.9mg NaCl, 0.2mg Na <sub>2</sub> HPO <sub>4</sub> , 0.05mg Thimerosal, 0.05mg NaN <sub>3</sub> .
Storage Instructions	Store at -20°C for one year from date of receipt. After reconstitution, at 4°C for one month. It can also be aliquotted and stored frozen at -20°C for six months. Avoid repeated freeze-thaw cycles.
Host	Rabbit
Uniprot ID	Q92597

### Technical Details

Immunogen	A synthetic peptide corresponding to a sequence in the middle region of human NDRG1.
Predicted Reactive Species	Canine, Horse, Rabbit
Recommended Detection Systems	Boster recommends Enhanced Chemiluminescent Kit with anti-Rabbit IgG (EK1002) for Western blot, and HRP Conjugated anti-Rabbit IgG Super Vision Assay Kit (SV0002-1) for IHC(P).
Cross Reactivity	No cross-reactivity with other proteins
Isotype	Rabbit IgG
Form	Lyophilized
Concentration	Adding 0.2 ml of distilled water will yield a concentration of 500 ug/ml.
Purification	Immunogen affinity purified.

**Suggested Dilutions**

Dilute the sample so that the expected range of concentrations fall within the detection range of this kit.

If the expected range of concentration is unknown, a pilot test should be conducted to decide the optimal dilution ratio for your samples.

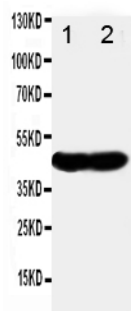
Some PubMed article(s) citing the expression level of this target are as follows:

Boster Bio's internal QC testing used:

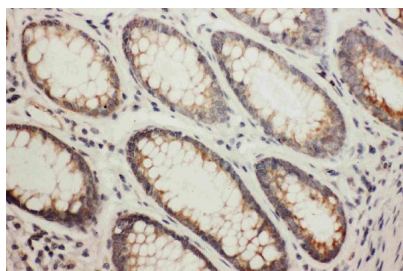
Immunohistochemistry (Paraffin-embedded Section), 0.5-1ug/ml, Human, By Heat

Western blot, 0.1-0.5ug/ml, Human

## Anti-Protein NDRG1 NDRG1 Antibody (PA1416) Images



Anti-NDRG1 antibody, PA1416, Western blotting  
Lane 1: SMMC Nucleus Cell Lysate  
Lane 2: SMMC Cytoplasm Cell Lysate



Anti-NDRG1 antibody, PA1416, IHC(P)  
IHC(P): Human Rectal Cancer Tissue

## Submit a product review to Biocompare.com

Submit a review of this product to Biocompare.com to receive a \$20 Amazon.com giftcard! Your reviews help your fellow scientists make the right decisions. Thank you for your contribution.



Anti-Protein NDRG1 NDRG1 Antibody