

## Anti-Bcl-2-like protein 2 Bcl2L2 Antibody

Catalog Number: PA1426-1

### About BCL2L2

Bcl-2-like protein 2 is a protein that in humans is encoded by the BCL2L2 gene. This gene encodes a pro-survival (anti-apoptotic) member of the bcl-2 protein family. Its gene is mapped to human chromosome 14q11.2-q12. In all, it has got 193 amino acids. Generally speaking, the BCL2 can be found in brain, colon and salivary gland. Acting as the anti- and pro-apoptotic regulators, it has played a vital role in reducing the cell apoptosis under cytotoxic conditions.

### Overview

Product Name	Anti-Bcl-2-like protein 2 Bcl2L2 Antibody
Reactive Species	Human, Mouse, Rat
Description	Boster Bio Anti-Bcl-2-like protein 2 Bcl2L2 Antibody catalog # PA1426-1. Tested in Flow Cytometry, IHC, ICC, WB applications. This antibody reacts with Human, Mouse, Rat.
Application	Flow Cytometry, IHC, ICC, WB
Clonality	Polyclonal
Formulation	Each vial contains 5mg BSA, 0.9mg NaCl, 0.2mg Na2HPO4, 0.05mg Thimerosal, 0.05mg NaN3.
Storage Instructions	Store at -20°C for one year from date of receipt. After reconstitution, at 4°C for one month. It can also be aliquotted and stored frozen at -20°C for six months. Avoid repeated freeze-thaw cycles.
Host	Rabbit
Uniprot ID	Q92843

### Technical Details

Immunogen	A synthetic peptide corresponding to a sequence in the middle region of human BCL2L2, identical to the related rat and mouse sequences.
Predicted Reactive Species	Hamster
Recommended Detection Systems	Boster recommends Enhanced Chemiluminescent Kit with anti-Rabbit IgG (EK1002) for Western blot, and HRP Conjugated anti-Rabbit IgG Super Vision Assay Kit (SV0002-1) for IHC(P), IHC(F) and ICC.
Cross Reactivity	No cross-reactivity with other proteins
Isotype	Rabbit IgG
Form	Lyophilized
Concentration	Adding 0.2 ml of distilled water will yield a concentration of 500 ug/ml.

Purification	Immunogen affinity purified.
Suggested Dilutions	<p>Dilute the sample so that the expected range of concentrations fall within the detection range of this kit.</p> <p>If the expected range of concentration is unknown, a pilot test should be conducted to decide the optimal dilution ratio for your samples.</p> <p>Some PubMed article(s) citing the expression level of this target are as follows:</p> <p>Boster Bio's internal QC testing used:</p> <p>Immunohistochemistry (Paraffin-embedded Section), 0.5-1ug/ml, Human, Rat, Mouse, By Heat</p> <p>Western blot, 0.1-0.5ug/ml, Human, Rat, Mouse</p> <p>Immunohistochemistry (Frozen Section), 0.5-1ug/ml, Human</p> <p>Immunocytochemistry, 0.5-1ug/ml, Human</p> <p>Flow Cytometry, 1-3ug/1x10<sup>6</sup> cells, Human</p>

## Anti-Bcl-2-like protein 2 Bcl2L2 Antibody (PA1426-1) Images

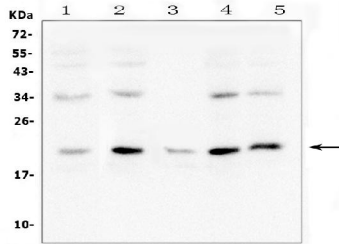


Figure 1. Western blot analysis of Bcl2L2 using anti-Bcl2L2 antibody (PA1426-1).

Electrophoresis was performed on a 5-20% SDS-PAGE gel at 70V (Stacking gel) / 90V (Resolving gel) for 2-3 hours. The sample well of each lane was loaded with 50ug of sample under reducing conditions.

Lane 1: human A549 whole cell lysates,  
Lane 2: human K562 whole cell lysates,  
Lane 3: human U-937 whole cell lysates,  
Lane 4: human Hela whole cell lysates.,  
Lane 5: human A431 whole cell lysates.

After Electrophoresis, proteins were transferred to a Nitrocellulose membrane at 150mA for 50-90 minutes. Blocked the membrane with 5% Non-fat Milk/ TBS for 1.5 hour at RT. The membrane was incubated with rabbit anti-Bcl2L2 antigen affinity purified polyclonal antibody (Catalog # PA1426-1) at 0.5 ug/mL overnight at 4°C, then washed with TBS-0.1%Tween 3 times with 5 minutes each and probed with a goat anti-rabbit IgG-HRP secondary antibody at a dilution of 1:10000 for 1.5 hour at RT. The signal is developed using an Enhanced Chemiluminescent detection (ECL) kit (Catalog # EK1002) with Tanon 5200 system. A specific band was detected for Bcl2L2 at approximately 21KD. The expected band size for Bcl2L2 is at 21KD.

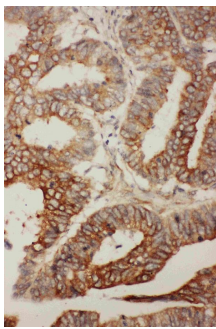


Figure 2. IHC analysis of BCL2L2 using anti-BCL2L2 antibody (PA1426-1).

BCL2L2 was detected in paraffin-embedded section of human rectal cancer tissues. Heat mediated antigen retrieval was performed in citrate buffer (pH6, epitope retrieval solution) for 20 mins. The tissue section was blocked with 10% goat serum. The tissue section was then incubated with 1ug/ml rabbit anti-BCL2L2 Antibody (PA1426-1) overnight at 4°C. Biotinylated goat anti-rabbit IgG was used as secondary antibody and incubated for 30 minutes at 37°C. The tissue section was developed using Streptavidin-Biotin-Complex (SABC)(Catalog # SA1022) with DAB as the chromogen.

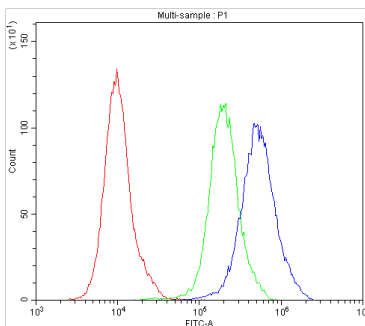


Figure 3. Flow Cytometry analysis of PC-3 cells using anti-BCL2L2 antibody (PA1426-1).

Overlay histogram showing PC-3 cells stained with PA1426-1 (Blue line).The cells were blocked with 10% normal goat serum. And then incubated with rabbit anti-BCL2L2 Antibody (PA1426-1,1ug/1x10<sup>6</sup> cells) for 30 min at 20°C. DyLight®488 conjugated goat anti-rabbit IgG (BA1127, 5-10ug/1x10<sup>6</sup> cells) was used as secondary antibody for 30 minutes at 20°C. Isotype control antibody (Green line) was rabbit IgG (1ug/1x10<sup>6</sup>) used under the same conditions. Unlabelled sample (Red line) was also used as a control.

1. PubMed ID: 33382670, Chen H, Sheng H, Zhao Y, Zhu G. Piperine Inhibits Cell Proliferation and Induces Apoptosis of Human Gastric Cancer Cells by Downregulating Phosphatidylinositol 3-Kinase (PI3K)/Akt Pathway. Med Sci Monit. 2020 Dec 31;26:e928403. doi:10.12659/MSM.928403. PMID:33382

Visit [bosterbio.com/anti-bcl2l2-antibody-pa1426-1-boster.html](https://bosterbio.com/anti-bcl2l2-antibody-pa1426-1-boster.html) to see all 1 publications.

## Submit a product review to Biocompare.com

Submit a review of this product to Biocompare.com to receive a \$20 Amazon.com giftcard! Your reviews help your fellow scientists make the right decisions. Thank you for your contribution.



Anti-Bcl-2-like protein 2 Bcl2L2 Antibody