

## Anti-Annexin VI/ANXA6 Antibody

Catalog Number: PA1436

### About ANXA6

Annexin A6 (ANXA6) is a member of a family of proteins that bind membrane or cytoskeleton in a Ca (2+)-dependent manner. These proteins are characterized by homologous amino acid sequences that are present in multiple copies in each protein. ANXA6 gene is assigned to 5q32-q34 by use of a cDNA clone to probe genomic DNA from rodent-human somatic cell hybrids and for in situ hybridization. The ANX6 gene is approximately 60 kb long and contains 26 exons. The genomic sequence at the 3-prime end does not contain a canonical polyadenylation signal. Ca (2+)-dependent binding between CRHSP28 and ANXA6 is required for acinar cell membrane trafficking events and digestive enzyme secretion

### Overview

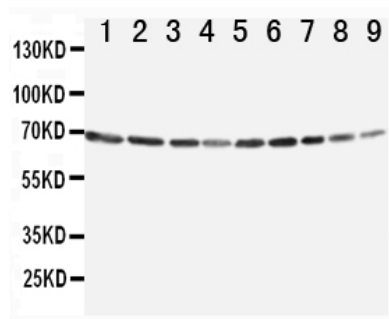
Product Name	Anti-Annexin VI/ANXA6 Antibody
Reactive Species	Human, Mouse, Rat
Description	Boster Bio Anti-Annexin VI/ANXA6 Antibody catalog # PA1436. Tested in IHC, WB applications. This antibody reacts with Human, Mouse, Rat.
Application	IHC, WB
Clonality	Polyclonal
Formulation	Each vial contains 5mg BSA, 0.9mg NaCl, 0.2mg Na2HPO4, 0.05mg Thimerosal, 0.05mg NaN3.
Storage Instructions	Store at -20°C for one year from date of receipt. After reconstitution, at 4°C for one month. It can also be aliquotted and stored frozen at -20°C for six months. Avoid repeated freeze-thaw cycles.
Host	Rabbit
Uniprot ID	P08133

### Technical Details

Immunogen	A synthetic peptide corresponding to a sequence at the C-terminus of human Annexin VI, identical to the related mouse and rat sequences.
Predicted Reactive Species	Hamster
Recommended Detection Systems	Boster recommends Enhanced Chemiluminescent Kit with anti-Rabbit IgG (EK1002) for Western blot, and HRP Conjugated anti-Rabbit IgG Super Vision Assay Kit (SV0002-1) for IHC(P) and IHC(F).
Cross Reactivity	No cross-reactivity with other proteins
Isotype	Rabbit IgG
Form	Lyophilized
Concentration	Adding 0.2 ml of distilled water will yield a concentration of 500 ug/ml.

Purification	Immunogen affinity purified.
Suggested Dilutions	<p>Dilute the sample so that the expected range of concentrations fall within the detection range of this kit.</p> <p>If the expected range of concentration is unknown, a pilot test should be conducted to decide the optimal dilution ratio for your samples.</p> <p>Some PubMed article(s) citing the expression level of this target are as follows:</p> <p>Boster Bio's internal QC testing used:</p> <p>Immunohistochemistry (Frozen Section), 0.5-1ug/ml, Rat, Human, Mouse</p> <p>Immunohistochemistry (Paraffin-embedded Section), 0.5-1ug/ml, Human, Rat, Mouse, By Heat</p> <p>Western blot, 0.1-0.5ug/ml, Human, Rat, Mouse</p>

## Anti-Annexin VI/ANXA6 Antibody (PA1436) Images



Anti-Annexin VI antibody, PA1436, Western blotting

Lane 1: Rat Ovary Tissue Lysate

Lane 2: Rat Liver Tissue Lysate

Lane 3: Rat Intestinum Tenue Tissue Lysate

Lane 4: Rat Brain Tissue Lysate

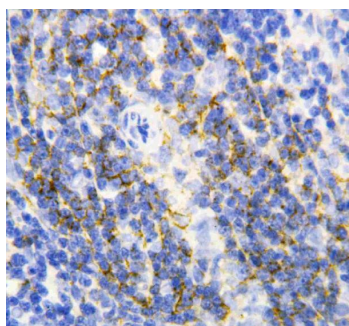
Lane 5: A549 Cell Lysate

Lane 6: JURKAT Cell Lysate

Lane 7: RAJI Cell Lysate

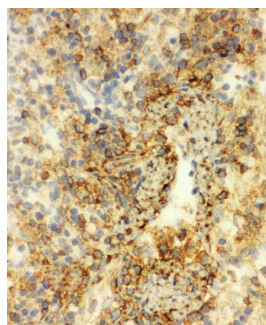
Lane 8: CEM Cell Lysate

Lane 9: SMMC Cell Lysate



Anti-Annexin VI antibody, PA1436, IHC(P)

IHC(P): Rat Spleen Tissue



Anti-Annexin VI antibody, PA1436, IHC(F)

IHC(F): Rat Spleen Tissue

## Submit a product review to Biocompare.com

Submit a review of this product to Biocompare.com to receive a \$20 Amazon.com giftcard! Your reviews help your fellow scientists make the right decisions. Thank you for your contribution.



Anti-Annexin VI/ANXA6 Antibody