

Anti-Caspase-1(P20)/CASP1 Antibody

Catalog Number: PA1440-1

About Casp1

Caspase 1 is a cysteine protease that regulates inflammatory processes through its capacity to process and activate the interleukin-1-beta, IL18, and IL33 precursor proteins. It belongs to a family of cysteine proteases known as caspases that always cleave proteins following an aspartic acid residue. The Caspase1 gene consists of 10 exons spanning at least 10.6 kb. The Caspase 1 gene is mapped to 11q23, a site frequently involved in rearrangement in human cancers, including a number of leukemias and lymphomas, by Southern DNA blot analysis of rodent-human hybrids and by in situ hybridization to normal human metaphase chromosomes. Caspase 1 has been shown to induce cell necrosis or pyroptosis and may function in various developmental stages.

Overview

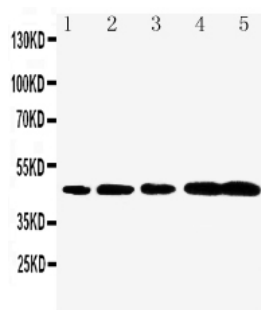
Product Name	Anti-Caspase-1(P20)/CASP1 Antibody
Reactive Species	Mouse, Rat
Description	Boster Bio Anti-Caspase-1 (P20)/CASP1 Antibody catalog # PA1440-1. Tested in WB applications. This antibody reacts with Mouse, Rat.
Application	WB
Clonality	Polyclonal
Formulation	Each vial contains 5mg BSA, 0.9mg NaCl, 0.2mg Na2HPO4, 0.05mg Thimerosal, 0.05mg NaN3.
Storage Instructions	Store at -20°C for one year from date of receipt. After reconstitution, at 4°C for one month. It can also be aliquotted and stored frozen at -20°C for six months. Avoid repeated freeze-thaw cycles.
Host	Rabbit
Uniprot ID	P29452

Technical Details

Immunogen	A synthetic peptide corresponding to a sequence at the N-terminus of mouse CASP1, different from the related rat sequence by three amino acids.
Predicted Reactive Species	Bovine
Recommended Detection Systems	Boster recommends Enhanced Chemiluminescent Kit with anti-Rabbit IgG (EK1002) for Western blot, and HRP Conjugated anti-Rabbit IgG Super Vision Assay Kit (SV0002-1) for IHC(P) and IHC(F).
Cross Reactivity	No cross-reactivity with other proteins
Isotype	Rabbit IgG
Form	Lyophilized

Concentration	Adding 0.2 ml of distilled water will yield a concentration of 500 ug/ml.
Purification	Immunogen affinity purified.
Suggested Dilutions	<p>Dilute the sample so that the expected range of concentrations fall within the detection range of this kit.</p> <p>If the expected range of concentration is unknown, a pilot test should be conducted to decide the optimal dilution ratio for your samples.</p> <p>Some PubMed article(s) citing the expression level of this target are as follows:</p> <p>Boster Bio's internal QC testing used:</p> <p>Western blot, 0.1-0.5ug/ml, Mouse, Rat</p>

Anti-Caspase-1(P20)/CASP1 Antibody (PA1440-1) Images



Anti-Caspase-1(P20) antibody, PA1440-1, Western blotting

Lane 1: Rat Brain Tissue Lysate

Lane 2: Rat Spleen Tissue Lysate

Lane 3: Mouse Brain Tissue Lysate

Lane 4: Mouse Spleen Tissue Lysate

Lane 5: Mouse Testis Tissue Lysate

24 Publications Citing This Product

1. PubMed ID: 33681944, Yang L,Liu Y,Wang Y,Li J,Liu N. Azeliragon ameliorates Alzheimer's disease via the Janus tyrosine kinase and signal transducer and activator of transcription signaling pathway. Clinics (Sao Paulo). 2021 Mar 8;76:e2348.doi:10.6061/clinics/2021/e2348.PMID:33681944;PMCID:PMC7920406.

2. PubMed ID: 32758603, Yang R,Li Y,Mehmood S,Yan C,Huang Y,Cai J,Ji J,Pan W,Zhang W,Chen Y.Polysaccharides from Armillariella tabescens mycelia ameliorate renal damage in type 2 diabetic mice.Int J Biol Macromol.2020 Nov 1;162:1682-1691.doi:10.1016/j.ijbiomac.2020.08.006.Epub

3. PubMed ID: 32952148, Fan X,Ma W,Zhang Y,Zhang L.P2X7 Receptor (P2X7R) of Microglia Mediates Neuroinflammation by Regulating (NOD)-Like Receptor Protein 3 (NLRP3) Inflammasome-Dependent Inflammation After Spinal Cord Injury. Med Sci Monit.2020 Sep 21;26:e925491.doi:10.12659/MS

Visit [bosterbio.com/anti-caspase-1-p20-antibody-pa1440-1-boster.html](https://www.bosterbio.com/anti-caspase-1-p20-antibody-pa1440-1-boster.html) to see all 24 publications.

Submit a product review to Biocompare.com

Submit a review of this product to Biocompare.com to receive a \$20 Amazon.com giftcard! Your reviews help your fellow scientists make the right decisions. Thank you for your contribution.



Anti-Caspase-1(P20)/CASP1 Antibody