

Anti-Caspase-1(P20)/CASP1 Antibody

Catalog Number: PA1440

About CASP1

Caspase 1 is a cysteine protease that regulates inflammatory processes through its capacity to process and activate the interleukin-1-beta, IL18, and IL33 precursor proteins. It belongs to a family of cysteine proteases known as caspases that always cleave proteins following an aspartic acid residue. The Caspase1 gene consists of 10 exons spanning at least 10.6 kb. The Caspase 1 gene is mapped to 11q23, a site frequently involved in rearrangement in human cancers, including a number of leukemias and lymphomas, by Southern DNA blot analysis of rodent-human hybrids and by in situ hybridization to normal human metaphase chromosomes. Caspase 1 has been shown to induce cell necrosis or pyroptosis and may function in various developmental stages.

Overview

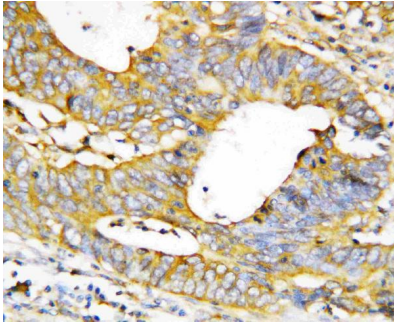
Product Name	Anti-Caspase-1(P20)/CASP1 Antibody
Reactive Species	Human
Description	Boster Bio Anti-Caspase-1 (P20)/CASP1 Antibody catalog # PA1440. Tested in IHC, WB applications. This antibody reacts with Human.
Application	IHC, WB
Clonality	Polyclonal
Formulation	Each vial contains 5mg BSA, 0.9mg NaCl, 0.2mg Na2HPO4, 0.05mg Thimerosal, 0.05mg NaN3.
Storage Instructions	Store at -20°C for one year from date of receipt. After reconstitution, at 4°C for one month. It can also be aliquotted and stored frozen at -20°C for six months. Avoid repeated freeze-thaw cycles.
Host	Rabbit
Uniprot ID	P29466

Technical Details

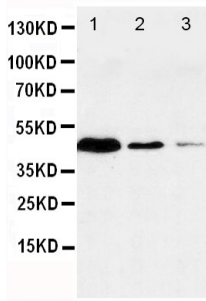
Immunogen	A synthetic peptide corresponding to a sequence at the N-terminus of human CASP1.
Predicted Reactive Species	Bovine
Recommended Detection Systems	Boster recommends Enhanced Chemiluminescent Kit with anti-Rabbit IgG (EK1002) for Western blot, and HRP Conjugated anti-Rabbit IgG Super Vision Assay Kit (SV0002-1) for IHC(P).
Cross Reactivity	No cross-reactivity with other proteins
Isotype	Rabbit IgG
Form	Lyophilized

Concentration	Adding 0.2 ml of distilled water will yield a concentration of 500 ug/ml.
Purification	Immunogen affinity purified.
Suggested Dilutions	<p>Dilute the sample so that the expected range of concentrations fall within the detection range of this kit.</p> <p>If the expected range of concentration is unknown, a pilot test should be conducted to decide the optimal dilution ratio for your samples.</p> <p>Some PubMed article(s) citing the expression level of this target are as follows:</p> <p>Boster Bio's internal QC testing used:</p> <p>Immunohistochemistry (Paraffin-embedded Section), 0.5-1ug/ml, Human, By Heat</p> <p>Western blot, 0.1-0.5ug/ml, Human</p>

Anti-Caspase-1(P20)/CASP1 Antibody (PA1440) Images



Anti-Caspase-1(P20) antibody, PA1440, IHC(P)
IHC(P): Human Mammary Cancer Tissue



Anti-Caspase-1(P20) antibody, PA1440, Western blotting
Lane 1: JURKAT Cell Lysate
Lane 2: RAJI Cell Lysate
Lane 3: CEM Cell Lysate

23 Publications Citing This Product

1. PubMed ID: 10.1016/j.ecoenv.2021.113097, Synergistic effects of botanical curcumin-induced programmed cell death on the management of *Spodoptera litura* Fabricius with avermectin
2. PubMed ID: -, Peng Yuan,Xifeng Sun,Xiao Liu,Georg Hutterer,Karl Pummer,Boris Hager,Zhangqun Ye,Zhiqiang Chen,Kaempferol alleviates calcium oxalate crystal-induced renal injury and crystal deposition via regulation of the AR/NOX2 signaling pathway,Phytomedicine,2021,153555,ISSN 0944-7113,https://doi.org/10.1016/j.phymed.2021.153555.
3. PubMed ID: 22101081, Fu Y, Zhao Z, Wu Y, Wu K, Xu X, Liu Y, Tong C. J Ethnopharmacol. 2012 Jan 6;139(1):26-33. Doi: 10.1016/J.Jep.2011.08.077. Epub 2011 Nov 10. Therapeutic Mechanisms Of Tongmai Dasheng Tablet On Tripterygium Glycosides Induced Rat Model For Premature...

Visit [bosterbio.com/anti-caspase-1-p20-antibody-pa1440-boster.html](https://www.bosterbio.com/anti-caspase-1-p20-antibody-pa1440-boster.html) to see all 23 publications.

Submit a product review to Biocompare.com

Submit a review of this product to Biocompare.com to receive a \$20 Amazon.com giftcard! Your reviews help your fellow scientists make the right decisions. Thank you for your contribution.



Anti-Caspase-1(P20)/CASP1 Antibody