

Anti-Caspase-6(P18)/CASP6 Antibody

Catalog Number: PA1441-1

About Casp6

Caspase 6 is an enzyme that in humans is encoded by the caspase 6 gene. This gene encodes a protein that is a member of the cysteine-aspartic acid protease (caspase) family. Using radiation hybrid mapping, the Caspase 6 gene is localized to human chromosome 4q25-q26. Caspase 6 functions as a downstream enzyme in the caspase activation cascade. And Caspase 6 can cleave lamin A to its signature apoptotic fragment.

Overview

Product Name	Anti-Caspase-6(P18)/CASP6 Antibody
Reactive Species	Mouse, Rat
Description	Boster Bio Anti-Caspase-6 (P18)/CASP6 Antibody catalog # PA1441-1. Tested in IHC, WB applications. This antibody reacts with Mouse, Rat.
Application	IHC, WB
Clonality	Polyclonal
Formulation	Each vial contains 5mg BSA, 0.9mg NaCl, 0.2mg Na2HPO4, 0.05mg Thimerosal, 0.05mg NaN3.
Storage Instructions	Store at -20°C for one year from date of receipt. After reconstitution, at 4°C for one month. It can also be aliquotted and stored frozen at -20°C for six months. Avoid repeated freeze-thaw cycles.
Host	Rabbit
Uniprot ID	O35397

Technical Details

Immunogen	A synthetic peptide corresponding to a sequence at the N-terminus of rat Caspase-6(P18), different from the related mouse sequence by two amino acids.
Predicted Reactive Species	Horse
Recommended Detection Systems	Boster recommends Enhanced Chemiluminescent Kit with anti-Rabbit IgG (EK1002) for Western blot, and HRP Conjugated anti-Rabbit IgG Super Vision Assay Kit (SV0002-1) for IHC(P) and IHC(F).
Cross Reactivity	No cross-reactivity with other proteins
Isotype	Rabbit IgG
Form	Lyophilized
Concentration	Adding 0.2 ml of distilled water will yield a concentration of 500 ug/ml.
Purification	Immunogen affinity purified.

Suggested Dilutions

Dilute the sample so that the expected range of concentrations fall within the detection range of this kit.

If the expected range of concentration is unknown, a pilot test should be conducted to decide the optimal dilution ratio for your samples.

Some PubMed article(s) citing the expression level of this target are as follows:

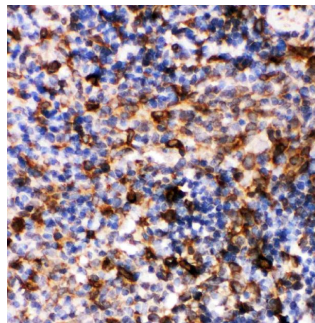
Boster Bio's internal QC testing used:

Immunohistochemistry (Paraffin-embedded Section), 0.5-1ug/ml, Mouse, Rat, By Heat

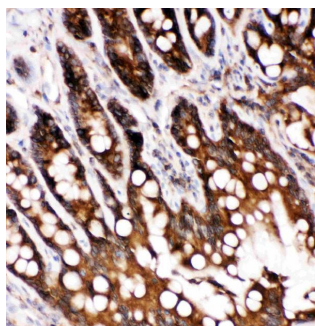
Immunohistochemistry (Frozen Section), 0.5-1ug/ml, Rat, Mouse

Western blot, 0.1-0.5ug/ml, Mouse, Rat

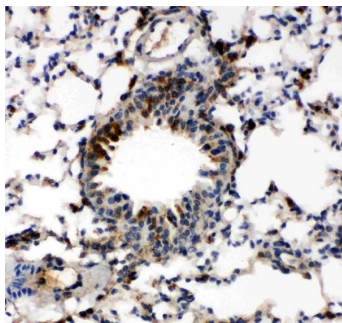
Anti-Caspase-6(P18)/CASP6 Antibody (PA1441-1) Images



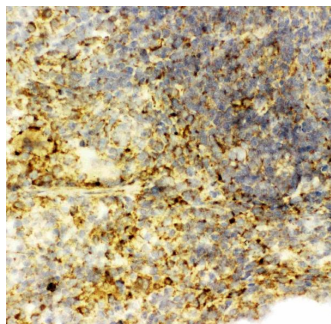
Anti-Caspase-6(P18) antibody, PA1441-1, IHC(P)
IHC(P): Rat Spleen Tissue



Anti-Caspase-6(P18) antibody, PA1441-1, IHC(P)
IHC(P): Rat Intestine Tissue

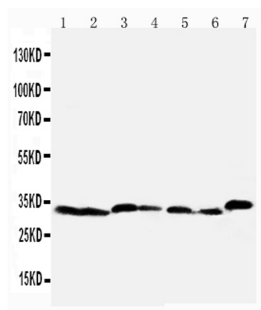


Anti-Caspase-6(P18) antibody, PA1441-1, IHC(P)
IHC(P): Mouse Lung Tissue



Anti-Caspase-6(P18) antibody, PA1441-1, IHC(F)
IHC(F): Rat Spleen Tissue

Anti-Caspase-6(P18) antibody, PA1441-1, Western blotting
Lane 1: Rat Liver Tissue Lysate
Lane 2: Rat Kidney Tissue Lysate
Lane 3: Rat Testis Tissue Lysate
Lane 4: NRK Cell Lysate
Lane 5: Mouse Liver Tissue Lysate
Lane 6: Mouse Kidney Tissue Lysate



Lane 7: Mouse Testis Tissue Lysate

Submit a product review to Biocompare.com

Submit a review of this product to Biocompare.com to receive a \$20 Amazon.com giftcard! Your reviews help your fellow scientists make the right decisions. Thank you for your contribution.



Anti-Caspase-6(P18)/CASP6 Antibody