

Anti-C-X-C motif chemokine 16 CXCL16 Antibody

Catalog Number: PA1460

About Cxcl16

CXCL16, Chemokine (C-X-C motif) ligand 16, is a small cytokine belonging to the CXC chemokine family. Larger than other chemokines (with 254 amino acids), CXCL16 is composed of a CXC chemokine domain, a mucin-like stalk, a transmembrane domain and a cytoplasmic tail containing a potential tyrosine phosphorylation site that may bind SH2. By somatic cell hybrid analysis, the CXCL16 gene is mapped to 17p13, a locus separate from all other known chemokines. Chemotaxis assays found that CXCL16 induced a strong chemotactic response in activated CD8 T cells. In addition, CXCL16 induced calcium mobilization.

Overview

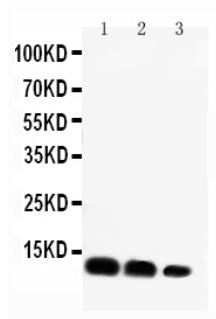
Product Name	Anti-C-X-C motif chemokine 16 CXCL16 Antibody
Reactive Species	Mouse
Description	Boster Bio Anti-C-X-C motif chemokine 16 CXCL16 Antibody catalog # PA1460. Tested in IHC, WB applications. This antibody reacts with Mouse.
Application	IHC, WB
Clonality	Polyclonal
Formulation	Each vial contains 4 mg Trehalose, 0.9 mg NaCl and 0.2mg Na ₂ HPO ₄ .
Storage Instructions	Store at -20°C for one year from date of receipt. After reconstitution, at 4°C for one month. It can also be aliquotted and stored frozen at -20°C for six months. Avoid repeated freeze-thaw cycles.
Host	Rabbit
Uniprot ID	Q8BSU2

Technical Details

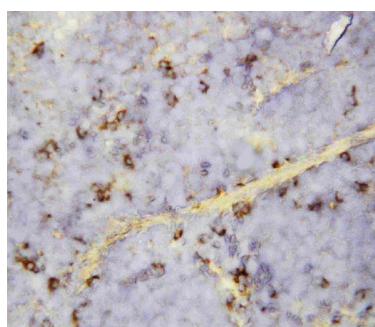
Immunogen	A synthetic peptide corresponding to a sequence in the middle region of mouse CXCL16.
Predicted Reactive Species	Hamster
Recommended Detection Systems	Boster recommends Enhanced Chemiluminescent Kit with anti-Rabbit IgG (EK1002) for Western blot, and HRP Conjugated anti-Rabbit IgG Super Vision Assay Kit (SV0002-1) for IHC(P).
Cross Reactivity	No cross-reactivity with other proteins
Isotype	Rabbit IgG
Form	Lyophilized
Concentration	Adding 0.2 ml of distilled water will yield a concentration of 500 ug/ml.

Purification	Immunogen affinity purified.
Suggested Dilutions	<p>Dilute the sample so that the expected range of concentrations fall within the detection range of this kit.</p> <p>If the expected range of concentration is unknown, a pilot test should be conducted to decide the optimal dilution ratio for your samples.</p> <p>Some PubMed article(s) citing the expression level of this target are as follows:</p> <p>Boster Bio's internal QC testing used:</p> <p>Immunohistochemistry (Paraffin-embedded Section), 0.5-1ug/ml, Mouse, By Heat</p> <p>Western blot, 0.1-0.5ug/ml, Mouse</p>

Anti-C-X-C motif chemokine 16 CXCL16 Antibody (PA1460) Images



Anti-CXCL16 antibody, PA1460, Western blotting
Lane 1: Recombinant Mouse CXCL16 Protein 10ng
Lane 2: Recombinant Mouse CXCL16 Protein 5ng
Lane 3: Recombinant Mouse CXCL16 Protein 2.5ng



Anti-CXCL16 antibody, PA1460, IHC(P)
IHC(P): Mouse Spleen Tissue

Submit a product review to Biocompare.com

Submit a review of this product to Biocompare.com to receive a \$20 Amazon.com giftcard! Your reviews help your fellow scientists make the right decisions. Thank you for your contribution.



Anti-C-X-C motif chemokine 16 CXCL16 Antibody