

## Anti-IL23 P19/IL23A Antibody

Catalog Number: PA1470

### About IL23a

IL-23, Interleukin-23, also known as Interleukin-23 subunit alpha1 (IL23A), is a heterodimeric cytokine consisting of two subunits, one called p40, which is shared with another cytokine, IL-12, and another called p19 (the IL-23 alpha subunit). The International Radiation Hybrid Mapping Consortium mapped the IL-23 gene to chromosome 12. IL-23 is an important part of the inflammatory response against infection. It promotes upregulation of the matrix metalloproteinase MMP9, increases angiogenesis and reduces CD8+ T-cell infiltration.

### Overview

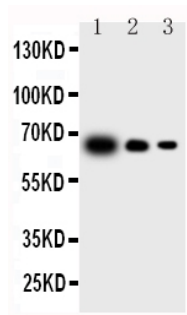
|                      |   |
|----------------------|---|
| Product Name         | Anti-IL23 P19/IL23A Antibody  |
| Reactive Species     | Mouse   |
| Description          | Boster Bio Anti-IL23 P19/IL23A Antibody catalog # PA1470. Tested in WB applications. This antibody reacts with Mouse.   |
| Application          | WB  |
| Clonality            | Polyclonal  |
| Formulation          | Each vial contains 5mg BSA, 0.9mg NaCl, 0.2mg Na2HPO4, 0.05mg Thimerosal, 0.05mg NaN3.  |
| Storage Instructions | Store at -20°C for one year from date of receipt. After reconstitution, at 4°C for one month. It can also be aliquotted and stored frozen at -20°C for six months. Avoid repeated freeze-thaw cycles. |
| Host                 | Rabbit  |
| Uniprot ID           | Q9EQ14  |

### Technical Details

|                               |  |
|-------------------------------|--|
| Immunogen                     | A synthetic peptide corresponding to a sequence at the N-terminus of mouse IL23 P19, different from the related rat sequence by two amino acids. |
| Predicted Reactive Species    | Horse, Rabbit  |
| Recommended Detection Systems | Boster recommends Enhanced Chemiluminescent Kit with anti-Rabbit IgG (EK1002) for Western blot.  |
| Cross Reactivity              | No cross-reactivity with other proteins  |
| Isotype                       | Rabbit IgG   |
| Form                          | Lyophilized  |
| Concentration                 | Adding 0.2 ml of distilled water will yield a concentration of 500 ug/ml.  |

|                     |  |
|---------------------|--|
| Purification        | Immunogen affinity purified.   |
| Suggested Dilutions | <p>Dilute the sample so that the expected range of concentrations fall within the detection range of this kit.</p> <p>If the expected range of concentration is unknown, a pilot test should be conducted to decide the optimal dilution ratio for your samples.</p> <p>Some PubMed article(s) citing the expression level of this target are as follows:</p> <p>Boster Bio's internal QC testing used:</p> <p>Western blot, 0.1-0.5ug/ml, Mouse</p> |

## Anti-IL23 P19/IL23A Antibody (PA1470) Images



All lanes: Anti-IL23 P19 antibody, PA1470  
Lane 1: Recombinant Mouse IL-23 Protein 10ng  
Lane 2: Recombinant Mouse IL-23 Protein 5ng  
Lane 3: Recombinant Mouse IL-23 Protein 2.5ng

## Submit a product review to Biocompare.com

Submit a review of this product to Biocompare.com to receive a \$20 Amazon.com giftcard! Your reviews help your fellow scientists make the right decisions. Thank you for your contribution.



Anti-IL23 P19/IL23A Antibody