

## Anti-Fos B/FOSB Antibody

Catalog Number: PA1478

### About FOSB

FOSB, FBJ murine osteosarcoma viral oncogene homolog B, is a protein that, in humans, is encoded by the FOSB gene. FOSB is a member of Fos gene family which consists of 4 members: FOS, FOSB, FOSL1, and FOSL2. The FOS proteins have been implicated as regulators of cell proliferation, differentiation, and transformation. The FOSB gene is mapped to 19q13.32. Delta FOSB is a truncated splice variant of FOSB. Delta FosB has been implicated in the development of drug addiction and control of the reward system in the brain, and is linked to changes in a number of other gene products such as CREB and sirtuins. Delta FosB also regulates the commitment of mesenchymal precursor cells to the adipocyte or osteoblast lineage.

### Overview

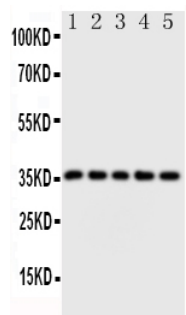
Product Name	Anti-Fos B/FOSB Antibody
Reactive Species	Human, Mouse, Rat
Description	Boster Bio Anti-Fos B/FOSB Antibody catalog # PA1478. Tested in WB applications. This antibody reacts with Human, Mouse, Rat.
Application	WB
Clonality	Polyclonal
Formulation	Each vial contains 5mg BSA, 0.9mg NaCl, 0.2mg Na <sub>2</sub> HPO <sub>4</sub> , 0.05mg Thimerosal, 0.05mg NaN <sub>3</sub> .
Storage Instructions	Store at -20°C for one year from date of receipt. After reconstitution, at 4°C for one month. It can also be aliquotted and stored frozen at -20°C for six months. Avoid repeated freeze-thaw cycles.
Host	Rabbit
Uniprot ID	P53539

### Technical Details

Immunogen	A synthetic peptide corresponding to a sequence at the N-terminus of human Fos B, identical to the related mouse and rat sequences.
Predicted Reactive Species	Hamster
Recommended Detection Systems	Boster recommends Enhanced Chemiluminescent Kit with anti-Rabbit IgG (EK1002) for Western blot.
Cross Reactivity	No cross-reactivity with other proteins
Isotype	Rabbit IgG
Form	Lyophilized

Concentration	Adding 0.2 ml of distilled water will yield a concentration of 500 ug/ml.
Purification	Immunogen affinity purified.
Suggested Dilutions	<p>Dilute the sample so that the expected range of concentrations fall within the detection range of this kit.</p> <p>If the expected range of concentration is unknown, a pilot test should be conducted to decide the optimal dilution ratio for your samples.</p> <p>Some PubMed article(s) citing the expression level of this target are as follows:</p> <p>Boster Bio's internal QC testing used:</p> <p>Western blot, 0.1-0.5ug/ml, Human, Mouse, Rat</p>

## Anti-Fos B/FOSB Antibody (PA1478) Images



Anti-Fos B antibody, PA1478, Western blotting

Lane 1: HT1080 Cell Lysate

Lane 2: SW620 Cell Lysate

Lane 3: HELA Cell Lysate

Lane 4: SMMC Cell Lysate

Lane 5: MM453 Cell Lysate

## Submit a product review to Biocompare.com

Submit a review of this product to Biocompare.com to receive a \$20 Amazon.com giftcard! Your reviews help your fellow scientists make the right decisions. Thank you for your contribution.



Anti-Fos B/FOSB Antibody