

## Anti-Tau/MAPT Antibody

Catalog Number: PA1482

### About MAPT

MAPT, Microtubule-associated protein tau, appears to be enriched in axons. The MAPT gene is assigned to chromosome 17 by hybridization of a cDNA clone to flow-sorted and spot-blotted chromosomes and to 17q21 by in situ hybridization, containing 16 exons. The tau proteins are the product of alternative splicing from a single gene that in humans is designated MAPT. Tau proteins are proteins that stabilize microtubules. They are abundant in neurons in the central nervous system and are less common elsewhere. When tau proteins are defective, and no longer stabilize microtubules properly, they can result in dementias such as Alzheimer's disease.

### Overview

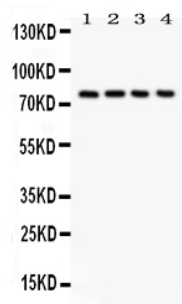
Product Name	Anti-Tau/MAPT Antibody
Reactive Species	Human, Mouse, Rat
Description	Boster Bio Anti-Tau/MAPT Antibody catalog # PA1482. Tested in WB applications. This antibody reacts with Human, Mouse, Rat.
Application	WB
Clonality	Polyclonal
Formulation	Each vial contains 5mg BSA, 0.9mg NaCl, 0.2mg Na <sub>2</sub> HPO <sub>4</sub> , 0.05mg Thimerosal, 0.05mg NaN <sub>3</sub> .
Storage Instructions	Store at -20°C for one year from date of receipt. After reconstitution, at 4°C for one month. It can also be aliquotted and stored frozen at -20°C for six months. Avoid repeated freeze-thaw cycles.
Host	Rabbit
Uniprot ID	P10636

### Technical Details

Immunogen	A synthetic peptide corresponding to a sequence at the N-terminus of human Tau, different from the related mouse and rat sequences by three amino acids.
Predicted Reactive Species	Canine, Rabbit
Recommended Detection Systems	Boster recommends Enhanced Chemiluminescent Kit with anti-Rabbit IgG (EK1002) for Western blot.
Cross Reactivity	No cross-reactivity with other proteins
Isotype	Rabbit IgG
Form	Lyophilized
Concentration	Adding 0.2 ml of distilled water will yield a concentration of 500 ug/ml.

Purification	Immunogen affinity purified.
Suggested Dilutions	<p>Dilute the sample so that the expected range of concentrations fall within the detection range of this kit.</p> <p>If the expected range of concentration is unknown, a pilot test should be conducted to decide the optimal dilution ratio for your samples.</p> <p>Some PubMed article(s) citing the expression level of this target are as follows:</p> <p>Boster Bio's internal QC testing used:</p> <p>Western blot, 0.1-0.5ug/ml, Human, Mouse, Rat</p>

## Anti-Tau/MAPT Antibody (PA1482) Images



Anti-Tau antibody, PA1482, Western blotting  
All lanes: Anti (PA1482) at 0.5ug/ml  
Lane 1: Rat Brain Tissue Lysate at 50ug  
Lane 2: Mouse Brain Tissue Lysate at 50ug  
Lane 3: HT1080 Whole Cell Lysate at 40ug  
Lane 4: MCF-7 Whole Cell Lysate at 40ug  
Predicted bind size: 79KD  
Observed bind size: 79KD

## 10 Publications Citing This Product

1. PubMed ID: 28934273, Han F1, Zhuang TT1, Chen JJ1, Zhu XL1,2, Cai YF1, Lu YP1. PLoS One. 2017 Sep 21;12(9):e0185102. doi: 10.1371/journal.pone.0185102. eCollection 2017. Novel derivative of Paeonol, Paeononlsilatie sodium, alleviates behavioral damage and hippocampal ...
2. PubMed ID: 28123476, The expression of insulin-like growth factor-1 in senior patients with diabetes and dementia
3. PubMed ID: 30102687, Micro-RNA-137 Inhibits Tau Hyperphosphorylation in Alzheimer's Disease and Targets the CACNA1C Gene in Transgenic Mice and Human Neuroblastoma %u2026

Visit [bosterbio.com/anti-tau-antibody-pa1482-boster.html](http://bosterbio.com/anti-tau-antibody-pa1482-boster.html) to see all 10 publications.

## Submit a product review to Biocompare.com

Submit a review of this product to Biocompare.com to receive a \$20 Amazon.com giftcard! Your reviews help your fellow scientists make the right decisions. Thank you for your contribution.



Anti-Tau/MAPT Antibody