

Anti-Angiopoietin-related protein 1 ANGPTL1 Antibody

Catalog Number: PA1487

About ANGPTL1

ANGPTL1, Angiopoietin-related protein 1, is a protein that in humans is encoded by the ANGPTL1 gene. Angiopoietins are members of the vascular endothelial growth factor family and the only known growth factors largely specific for vascular endothelium. Angiopoietin-1, angiopoietin-2, and angiopoietin-4 participate in the formation of blood vessels. The protein encoded by this gene is another member of the angiopoietin family that is widely expressed in adult tissues with mRNA levels highest in highly vascularized tissues. This protein was found to be a secretory protein that does not act as an endothelial cell mitogen in vitro. ANGPTL1 is widely expressed in human adult tissues as a major 3.0-kb transcript and a less abundant 4.0-kb transcript.

Overview

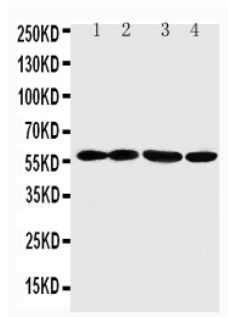
Product Name	Anti-Angiopoietin-related protein 1 ANGPTL1 Antibody
Reactive Species	Human, Mouse, Rat
Description	Boster Bio Anti-Angiopoietin-related protein 1 ANGPTL1 Antibody catalog # PA1487. Tested in WB applications. This antibody reacts with Human, Mouse, Rat.
Application	WB
Clonality	Polyclonal
Formulation	Each vial contains 5mg BSA, 0.9mg NaCl, 0.2mg Na ₂ HPO ₄ , 0.05mg Thimerosal, 0.05mg NaN ₃ .
Storage Instructions	Store at -20°C for one year from date of receipt. After reconstitution, at 4°C for one month. It can also be aliquotted and stored frozen at -20°C for six months. Avoid repeated freeze-thaw cycles.
Host	Rabbit
Uniprot ID	O95841

Technical Details

Immunogen	A synthetic peptide corresponding to a sequence at the C-terminus of human ANGPTL1, identical to the related rat and mouse sequences.
Predicted Reactive Species	Hamster
Recommended Detection Systems	Boster recommends Enhanced Chemiluminescent Kit with anti-Rabbit IgG (EK1002) for Western blot.
Cross Reactivity	No cross-reactivity with other proteins
Isotype	Rabbit IgG
Form	Lyophilized

Concentration	Adding 0.2 ml of distilled water will yield a concentration of 500 ug/ml.
Purification	Immunogen affinity purified.
Suggested Dilutions	<p>Dilute the sample so that the expected range of concentrations fall within the detection range of this kit.</p> <p>If the expected range of concentration is unknown, a pilot test should be conducted to decide the optimal dilution ratio for your samples.</p> <p>Some PubMed article(s) citing the expression level of this target are as follows:</p> <p>Boster Bio's internal QC testing used:</p> <p>Western blot, 0.1-0.5ug/ml, Human, Rat, Mouse</p>

Anti-Angiopoietin-related protein 1 ANGPTL1 Antibody (PA1487) Images



Anti-ANGPTL1 antibody, PA1487, Western blotting

Lane 1: A549 Cell Lysate

Lane 2: SW620 Cell Lysate

Lane 3: MCF-7 Cell Lysate

Lane 4: MM231 Cell Lysate

Submit a product review to Biocompare.com

Submit a review of this product to Biocompare.com to receive a \$20 Amazon.com giftcard! Your reviews help your fellow scientists make the right decisions. Thank you for your contribution.



Anti-Angiopoietin-related protein 1 ANGPTL1 Antibody