

Anti-Caspase 4/CASP4 Antibody

Catalog Number: PA1490

About CASP4

Caspase 4 is an enzyme that proteolytically cleaves other proteins at an aspartic acid residue, and belongs to a family of cysteine proteases called caspases. The Caspase 4 gene is mapped to a P1 clone containing the ICE gene, which is located at chromosome 11q22.2-q22.3. It contains 8 coding exons. The function of caspase 4 is not fully known, but it is believed to be an inflammatory caspase, along with caspase 1, caspase 5 (and the murine homolog caspase 11), with a role in the immune system.

Overview

Product Name	Anti-Caspase 4/CASP4 Antibody
Reactive Species	Human
Description	Boster Bio Anti-Caspase 4/CASP4 Antibody catalog # PA1490. Tested in IHC, WB applications. This antibody reacts with Human.
Application	IHC, WB
Clonality	Polyclonal
Formulation	Each vial contains 5mg BSA, 0.9mg NaCl, 0.2mg Na ₂ HPO ₄ , 0.05mg Thimerosal, 0.05mg NaN ₃ .
Storage Instructions	Store at -20°C for one year from date of receipt. After reconstitution, at 4°C for one month. It can also be aliquotted and stored frozen at -20°C for six months. Avoid repeated freeze-thaw cycles.
Host	Rabbit
Uniprot ID	P49662

Technical Details

Immunogen	A synthetic peptide corresponding to a sequence at the N-terminus of human Caspase 4.
Predicted Reactive Species	Bovine
Recommended Detection Systems	Boster recommends Enhanced Chemiluminescent Kit with anti-Rabbit IgG (EK1002) for Western blot, and HRP Conjugated anti-Rabbit IgG Super Vision Assay Kit (SV0002-1) for IHC(P).
Cross Reactivity	No cross-reactivity with other proteins
Isotype	Rabbit IgG
Form	Lyophilized
Concentration	Adding 0.2 ml of distilled water will yield a concentration of 500 ug/ml.
Purification	Immunogen affinity purified.

Suggested Dilutions

Dilute the sample so that the expected range of concentrations fall within the detection range of this kit.

If the expected range of concentration is unknown, a pilot test should be conducted to decide the optimal dilution ratio for your samples.

Some PubMed article(s) citing the expression level of this target are as follows:

Boster Bio's internal QC testing used:

Immunohistochemistry (Paraffin-embedded Section), 0.5-1ug/ml, Human, By Heat
Western blot, 0.1-0.5ug/ml, Human

Anti-Caspase 4/CASP4 Antibody (PA1490) Images



Anti-Caspase 4 antibody, PA1490, Western blotting

All lanes: Anti Caspase 4 (PA1490) at 0.5ug/ml

Lane 1: MCF-7 Whole Cell Lysate at 40ug

Lane 2: HELA Whole Cell Lysate at 40ug

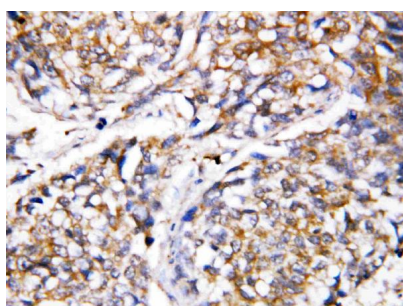
Lane 3: JURKAT Whole Cell Lysate at 40ug

Lane 4: CEM Whole Cell Lysate at 40ug

Lane 5: SW620 Whole Cell Lysate at 40ug

Predicted bind size: 43KD

Observed bind size: 20KD



Anti-Caspase 4 antibody, PA1490, IHC(P)

IHC(P): Human Mammary Cancer Tissue

2 Publications Citing This Product

1. PubMed ID: 22959511, Chen J, Wei H, Xie B, Wang B, Cheng J, Cheng J. Leuk Res. 2012 Dec;36(12):1526-35. Doi: 10.1016/J.Leukres.2012.08.018. Epub 2012 Sep 7. Endoplasmic Reticulum Stress Contributes To Arsenic Trioxide-Induced Apoptosis In Drug-Sensitive And -Resistant...

2. PubMed ID: 25661376, Ji J, Yan X, Li Z, Lai Z, Liu J. Biomed Pharmacother. 2015 Feb;69:311-6. Doi: 10.1016/J.Bioph.2014.12.020. Epub 2014 Dec 19. Therapeutic Effects Of Intrathecal Versus Intravenous Monosialoganglioside Against Bupivacaine-Induced Spinal Neurotoxicity...

Visit bosterbio.com/anti-caspase-4-antibody-pa1490-boster.html to see all 2 publications.

Submit a product review to Biocompare.com

Submit a review of this product to Biocompare.com to receive a \$20 Amazon.com giftcard! Your reviews help your fellow scientists make the right decisions. Thank you for your contribution.



Anti-Caspase 4/CASP4 Antibody