

## Anti-Apelin/APLN Antibody

Catalog Number: PA1501

### About APLN

Apelin is a neuropeptide expressed in the supraoptic and paraventricular nuclei that acts on specific receptors located on vasopressinergic neurons. The apelin gene to Xq25-q26.3 based on sequence similarity between the apelin sequence and a chromosome X PAC clone. This gene encodes a peptide that functions as an endogenous ligand for the G protein coupled receptor APJ. The encoded protein is synthesized as a prepropeptide that is processed into biologically active C-terminal fragments. The peptide fragments activate different tissue specific signaling pathways that regulate diverse biological functions including fluid homeostasis, cardiovascular function and insulin secretion. This protein also functions as a coreceptor for the human immunodeficiency virus 1.

### Overview

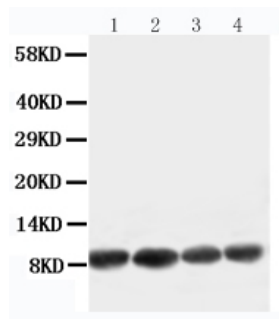
Product Name	Anti-Apelin/APLN Antibody
Reactive Species	Human, Mouse, Rat
Description	Boster Bio Anti-Apelin/APLN Antibody catalog # PA1501. Tested in WB applications. This antibody reacts with Human, Mouse, Rat.
Application	WB
Clonality	Polyclonal
Formulation	Each vial contains 5mg BSA, 0.9mg NaCl, 0.2mg Na <sub>2</sub> HPO <sub>4</sub> , 0.05mg Thimerosal, 0.05mg NaN <sub>3</sub> .
Storage Instructions	Store at -20°C for one year from date of receipt. After reconstitution, at 4°C for one month. It can also be aliquotted and stored frozen at -20°C for six months. Avoid repeated freeze-thaw cycles.
Host	Rabbit
Uniprot ID	Q9ULZ1

### Technical Details

Immunogen	A synthetic peptide corresponding to a sequence at the C-terminus of human Apelin, identical to the related rat and mouse sequences.
Predicted Reactive Species	Hamster
Recommended Detection Systems	Boster recommends Enhanced Chemiluminescent Kit with anti-Rabbit IgG (EK1002) for Western blot.
Cross Reactivity	No cross-reactivity with other proteins
Isotype	Rabbit IgG
Form	Lyophilized

Concentration	Adding 0.2 ml of distilled water will yield a concentration of 500 ug/ml.
Purification	Immunogen affinity purified.
Suggested Dilutions	<p>Dilute the sample so that the expected range of concentrations fall within the detection range of this kit.</p> <p>If the expected range of concentration is unknown, a pilot test should be conducted to decide the optimal dilution ratio for your samples.</p> <p>Some PubMed article(s) citing the expression level of this target are as follows:</p> <p>Boster Bio's internal QC testing used:</p> <p>Western blot, 0.1-0.5ug/ml, Human, Rat, Mouse</p>

## Anti-Apelin/APLN Antibody (PA1501) Images



Anti-Apelin antibody, PA1501, Western blotting  
Working concentration of primary antibody: 0.5 ug/ml; 40ug protein was loaded.  
Lane 1: U87 Cell Lysate  
Lane 2: MCF-7 Cell Lysate  
Lane 3: HELA Cell Lysate  
Lane 4: MM453 Cell Lysate

## Submit a product review to Biocompare.com

Submit a review of this product to Biocompare.com to receive a \$20 Amazon.com giftcard! Your reviews help your fellow scientists make the right decisions. Thank you for your contribution.



Anti-Apelin/APLN Antibody