

Anti-MCL1 Antibody

Catalog Number: PA1503

About MCL1

BCL2L3, also known as MCL1 (myeloid cell leukemia sequence 1) encodes an anti-apoptotic protein, which is a member of the Bcl-2 family. Alternative splicing results in multiple transcript variants. The longest gene product (isoform 1) enhances cell survival by inhibiting apoptosis while the alternatively spliced shorter gene products (isoform 2 and isoform 3) promote apoptosis and are death-inducing. Using the methods of somatic cell hybrid analysis and fluorescence in situ hybridization, the MCL1 gene is mapped to human 1q21. MCL1 is a critical and specific regulator essential for ensuring the homeostasis of early hematopoietic progenitors. Phosphorylation of MCL1 directs its interaction with the tumor suppressor protein FBW7, which is the substrate-binding component of a ubiquitin ligase complex. The polyubiquitylation of MCL1 then targets it for proteasomal degradation. The degradation of MCL1 was blocked in patient-derived tumor cells that lacked FBW7 or had loss-of-function mutations in FBW7, conferring resistance to antitubulin agents and promoting chemotherapeutic-induced polyploidy.

Overview

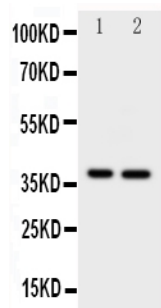
Product Name	Anti-MCL1 Antibody
Reactive Species	Human
Description	Boster Bio Anti-MCL1 Antibody catalog # PA1503. Tested in WB applications. This antibody reacts with Human.
Application	WB
Clonality	Polyclonal
Formulation	Each vial contains 5mg BSA, 0.9mg NaCl, 0.2mg Na ₂ HPO ₄ , 0.05mg Thimerosal, 0.05mg NaN ₃ .
Storage Instructions	Store at -20°C for one year from date of receipt. After reconstitution, at 4°C for one month. It can also be aliquotted and stored frozen at -20°C for six months. Avoid repeated freeze-thaw cycles.
Host	Rabbit
Uniprot ID	Q07820

Technical Details

Immunogen	A synthetic peptide corresponding to a sequence at the C-terminus of human MCL1, different from the related mouse sequence by one amino acid.
Predicted Reactive Species	Hamster
Recommended Detection Systems	Boster recommends Enhanced Chemiluminescent Kit with anti-Rabbit IgG (EK1002) for Western blot.
Cross Reactivity	No cross-reactivity with other proteins
Isotype	Rabbit IgG

Form	Lyophilized
Concentration	Adding 0.2 ml of distilled water will yield a concentration of 500 ug/ml.
Purification	Immunogen affinity purified.
Suggested Dilutions	<p>Dilute the sample so that the expected range of concentrations fall within the detection range of this kit.</p> <p>If the expected range of concentration is unknown, a pilot test should be conducted to decide the optimal dilution ratio for your samples.</p> <p>Some PubMed article(s) citing the expression level of this target are as follows:</p> <p>Boster Bio's internal QC testing used:</p> <p>Western blot, 0.1-0.5ug/ml, Human</p>

Anti-MCL1 Antibody (PA1503) Images



Anti-MCL1 antibody, PA1503, Western blotting
All lanes: Anti MCL1 (PA1503) at 0.5ug/ml
Lane 1: HELA Whole Cell Lysate at 40ug
Lane 2: MCF-7 Whole Cell Lysate at 40ug
Predicted bind size: 37KD
Observed bind size: 37KD

1 Publications Citing This Product

1. PubMed ID: 25747387, Liu N, Chen T, Wang X, Yang D, Xue B, Zhu H. Febs Lett. 2015 Apr 2;589(8):897-903. Doi: 10.1016/J.Febslet.2015.02.026. Epub 2015 Mar 3. Msi1 Confers Resistance To Trail By Activating Erk In Liver Cancer Cells.

Visit bosterbio.com/anti-mcl1-antibody-pa1503-boster.html to see all 1 publications.

Submit a product review to Biocompare.com

Submit a review of this product to Biocompare.com to receive a \$20 Amazon.com giftcard! Your reviews help your fellow scientists make the right decisions. Thank you for your contribution.



Anti-MCL1 Antibody