

## Anti-B-cell lymphoma/leukemia 10 Bcl10 Antibody

Catalog Number: PA1504

### About BCL10

BCL10, B-cell CLL/lymphoma 10, gene was identified by its translocation in a case of mucosa-associated lymphoid tissue (MALT) lymphoma. The BCL10 gene is mapped to chromosome 1p22. The protein encoded by this gene contains a caspase recruitment domain (CARD), and has been shown to induce apoptosis and to activate NF-kappaB. This protein is reported to interact with other CARD domain containing proteins including CARD9, 10, 11 and 14, which are thought to function as upstream regulators in NF-kappaB signaling. This protein is found to form a complex with MALT1, a protein encoded by another gene known to be translocated in MALT lymphoma. MALT1 and this protein are thought to synergize in the activation of NF-kappaB, and the deregulation of either of them may contribute to the same pathogenetic process that leads to the malignancy.

### Overview

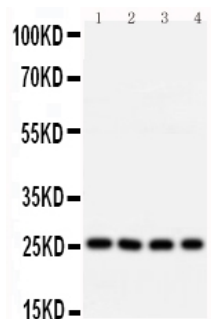
Product Name	Anti-B-cell lymphoma/leukemia 10 Bcl10 Antibody
Reactive Species	Human, Mouse, Rat
Description	Boster Bio Anti-B-cell lymphoma/leukemia 10 Bcl10 Antibody catalog # PA1504. Tested in WB applications. This antibody reacts with Human, Mouse, Rat.
Application	WB
Clonality	Polyclonal
Formulation	Each vial contains 4 mg Trehalose, 0.9 mg NaCl and 0.2mg Na2HPO4.
Storage Instructions	Store at -20°C for one year from date of receipt. After reconstitution, at 4°C for one month. It can also be aliquotted and stored frozen at -20°C for six months. Avoid repeated freeze-thaw cycles.
Host	Rabbit
Uniprot ID	O95999

### Technical Details

Immunogen	A synthetic peptide corresponding to a sequence at the N-terminus of human Bcl10, identical to the related rat and mouse sequences.
Predicted Reactive Species	Hamster
Recommended Detection Systems	Boster recommends Enhanced Chemiluminescent Kit with anti-Rabbit IgG (EK1002) for Western blot.
Cross Reactivity	No cross-reactivity with other proteins
Isotype	Rabbit IgG
Form	Lyophilized

Concentration	Adding 0.2 ml of distilled water will yield a concentration of 500 ug/ml.
Purification	Immunogen affinity purified.
Suggested Dilutions	<p>Dilute the sample so that the expected range of concentrations fall within the detection range of this kit.</p> <p>If the expected range of concentration is unknown, a pilot test should be conducted to decide the optimal dilution ratio for your samples.</p> <p>Some PubMed article(s) citing the expression level of this target are as follows:</p> <p>Boster Bio's internal QC testing used:</p> <p>Western blot, 0.1-0.5ug/ml, Human, Rat, Mouse</p>

## Anti-B-cell lymphoma/leukemia 10 Bcl10 Antibody (PA1504) Images



Anti-Bcl10 antibody, PA1504, Western blotting

Lane 1: U87 Cell Lysate

Lane 2: MCF-7 Cell Lysate

Lane 3: HELA Cell Lysate

Lane 4: COLO320 Cell Lysate

## Submit a product review to Biocompare.com

Submit a review of this product to Biocompare.com to receive a \$20 Amazon.com giftcard! Your reviews help your fellow scientists make the right decisions. Thank you for your contribution.



Anti-B-cell lymphoma/leukemia 10 Bcl10 Antibody