

## Anti-Caspase-10/CASP10 Antibody

Catalog Number: PA1513

### About CASP10

Caspase-10 is an enzyme that, in humans, is encoded by the CASP10 gene. The Caspase 10 gene contains 11 exons and spans about 48 kb. This gene is mapped to 2q33.1. It is transcribed in the centromere-to-telomere direction. This gene encodes a protein that is a member of the cysteine-aspartic acid protease (caspase) family. Sequential activation of caspases plays a central role in the execution-phase of cell apoptosis. Caspases exist as inactive proenzymes that undergo proteolytic processing at conserved aspartic residues to produce two subunits, large and small, that dimerize to form the active enzyme. This protein cleaves and activates caspases 3 and 7, and the protein itself is processed by caspase 8. Mutations in this gene are associated with apoptosis defects seen in type II autoimmune lymphoproliferative syndrome. Three alternatively spliced transcript variants encoding different isoforms have been described for this gene.

### Overview

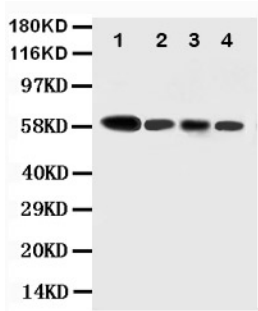
Product Name	Anti-Caspase-10/CASP10 Antibody
Reactive Species	Human
Description	Boster Bio Anti-Caspase-10/CASP10 Antibody catalog # PA1513. Tested in Flow Cytometry, WB applications. This antibody reacts with Human.
Application	Flow Cytometry, WB
Clonality	Polyclonal
Formulation	Each vial contains 4 mg Trehalose, 0.9 mg NaCl, 0.2mg Na <sub>2</sub> HPO <sub>4</sub> , 0.05 mg NaN <sub>3</sub> .
Storage Instructions	Store at -20°C for one year from date of receipt. After reconstitution, at 4°C for one month. It can also be aliquotted and stored frozen at -20°C for six months. Avoid repeated freeze-thaw cycles.
Host	Rabbit
Uniprot ID	Q92851

### Technical Details

Immunogen	A synthetic peptide corresponding to a sequence at the N-terminus of human CASP10.
Predicted Reactive Species	Rabbit
Recommended Detection Systems	Boster recommends Enhanced Chemiluminescent Kit with anti-Rabbit IgG (EK1002) for Western blot.
Cross Reactivity	No cross-reactivity with other proteins
Isotype	Rabbit IgG
Form	Lyophilized

Concentration	Adding 0.2 ml of distilled water will yield a concentration of 500 ug/ml.
Purification	Immunogen affinity purified.
Suggested Dilutions	<p>Dilute the sample so that the expected range of concentrations fall within the detection range of this kit.</p> <p>If the expected range of concentration is unknown, a pilot test should be conducted to decide the optimal dilution ratio for your samples.</p> <p>Some PubMed article(s) citing the expression level of this target are as follows:</p> <p>Boster Bio's internal QC testing used:</p> <p>Western blot, 0.1-0.5ug/ml, Human</p> <p>Flow Cytometry, 1-3 ug/1x10<sup>6</sup> cells, Human</p>

## Anti-Caspase-10/CASP10 Antibody (PA1513) Images



Anti-Caspase-10 antibody, PA1513, Western blotting  
Lane 1: COLO320 Cell Lysate  
Lane 2: HELA Cell Lysate  
Lane 3: SW620 Cell Lysate  
Lane 4: RAJI Cell Lysate

## 1 Publications Citing This Product

1. PubMed ID: 23810797, Chen K, Shu G, Peng X, Fang J, Cui H, Chen J, Wang F, Chen Z, Zuo Z, Deng J, Geng Y, Lai W. Food Chem Toxicol. 2013 Sep;59:446-54. Doi: 10.1016/J.Fct.2013.06.032. Epub 2013 Jun 28. Protective Role Of Sodium Selenite On Histopathological Lesions, D...

Visit [bosterbio.com/anti-caspase-10-antibody-pa1513-boster.html](http://bosterbio.com/anti-caspase-10-antibody-pa1513-boster.html) to see all 1 publications.

## Submit a product review to Biocompare.com

Submit a review of this product to Biocompare.com to receive a \$20 Amazon.com giftcard! Your reviews help your fellow scientists make the right decisions. Thank you for your contribution.



Anti-Caspase-10/CASP10 Antibody