

## Anti-CD90/Thy1 Antibody

Catalog Number: PA1515-1

### About THY1

CD90 (Cluster of Differentiation 90) or Thy-1 is a 25–37 kDa heavily N-glycosylated, glycoposphatidylinositol (GPI) anchored conserved cell surface protein with a single V-like immunoglobulin domain, originally discovered as a thymocyte antigen. The CD90 gene is mapped to 11q23.3. Thy-1 can be used as a marker for a variety of stem cells and for the axonal processes of mature neurons. Structural study of Thy-1 lead to the foundation of the Immunoglobulin superfamily, of which it is the smallest member, and led to the first biochemical description and characterization of a vertebrate GPI anchor.

### Overview

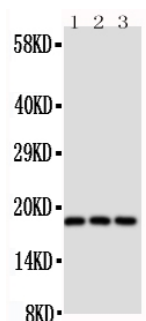
Product Name	Anti-CD90/Thy1 Antibody
Reactive Species	Human, Mouse, Rat
Description	Boster Bio Anti-CD90/Thy1 Antibody catalog # PA1515-1. Tested in WB applications. This antibody reacts with Human, Mouse, Rat.
Application	WB
Clonality	Polyclonal
Formulation	Each vial contains 5mg BSA, 0.9mg NaCl, 0.2mg Na2HPO4, 0.05mg Thimerosal, 0.05mg NaN3.
Storage Instructions	Store at -20°C for one year from date of receipt. After reconstitution, at 4°C for one month. It can also be aliquotted and stored frozen at -20°C for six months. Avoid repeated freeze-thaw cycles.
Host	Rabbit
Uniprot ID	P04216

### Technical Details

Immunogen	A synthetic peptide corresponding to a sequence at the N-terminus of human CD90, different from the related mouse sequence by two amino acids, and from the related rat sequence by four amino acids.
Predicted Reactive Species	Hamster
Recommended Detection Systems	Boster recommends Enhanced Chemiluminescent Kit with anti-Rabbit IgG (EK1002) for Western blot.
Cross Reactivity	No cross-reactivity with other proteins
Isotype	Rabbit IgG
Form	Lyophilized

Concentration	Adding 0.2 ml of distilled water will yield a concentration of 500 ug/ml.
Purification	Immunogen affinity purified.
Suggested Dilutions	<p>Dilute the sample so that the expected range of concentrations fall within the detection range of this kit.</p> <p>If the expected range of concentration is unknown, a pilot test should be conducted to decide the optimal dilution ratio for your samples.</p> <p>Some PubMed article(s) citing the expression level of this target are as follows:</p> <p>Boster Bio's internal QC testing used:</p> <p>Western blot, 0.1-0.5ug/ml, Rat, Human, Mouse</p>

## Anti-CD90/Thy1 Antibody (PA1515-1) Images



Anti-CD90/Thy1 antibody, PA1515-1, Western blotting

Lane 1: Rat Brain Tissue Lysate

Lane 2: Rat Liver Tissue Lysate

Lane 3: Rat Thymus Tissue Lysate

## 7 Publications Citing This Product

1. PubMed ID: -, Wu,H.,Jiang,X.,Li,Y.,Zhou,Y.,Zhang,T.,Zhi,P.,Gao,J.,Engineering Stem Cell Derived Biomimetic Vesicles for Versatility and Effective Targeted Delivery.Adv. Funct.Mater.2020, 30, 2006169.<https://doi.org/10.1002/adfm.202006169>
2. PubMed ID: 22553557, Differentiation of mesenchymal stem cell in the microenviroment of retinitis pigmentosa
3. PubMed ID: 28341839, Therapeutic efficacy of neural stem cells originating from umbilical cord-derived mesenchymal stem cells in diabetic retinopathy

Visit [bosterbio.com/anti-cd90-thy1-antibody-pa1515-1-boster.html](https://www.bosterbio.com/anti-cd90-thy1-antibody-pa1515-1-boster.html) to see all 7 publications.

## Submit a product review to Biocompare.com

Submit a review of this product to Biocompare.com to receive a \$20 Amazon.com giftcard! Your reviews help your fellow scientists make the right decisions. Thank you for your contribution.



Anti-CD90/Thy1 Antibody