

## Anti-Eotaxin/CCL11 Antibody

Catalog Number: PA1531

### About Ccl11

Eotaxin, also known as CCL11 (Chemokine (C-C motif) ligand 11), a small cytokine belonging to the CC chemokine family. Eotaxin selectively recruits eosinophils by inducing their chemotaxis, and therefore, is implicated in allergic responses. The effects of Eotaxin are mediated by its binding to a G-protein-linked receptor known as a chemokine receptor. Chemokine receptors for which Eotaxin is a ligand include CCR2, CCR3 and CCR5. However, it has been found that eotaxin-1 (CCL11) has high degree selectivity for its receptor, such that they are inactive on neutrophils and monocytes, which do not express CCR3. The gene for human Eotaxin is encoded on three exons and is located on chromosome 17q12.

### Overview

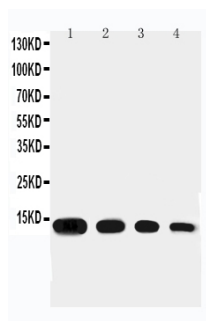
Product Name	Anti-Eotaxin/CCL11 Antibody
Reactive Species	Mouse, Rat
Description	Boster Bio Anti-Eotaxin/CCL11 Antibody catalog # PA1531. Tested in WB applications. This antibody reacts with Mouse, Rat.
Application	WB
Clonality	Polyclonal
Formulation	Each vial contains 5mg BSA, 0.9mg NaCl, 0.2mg Na <sub>2</sub> HPO <sub>4</sub> , 0.05mg Thimerosal, 0.05mg NaN <sub>3</sub> .
Storage Instructions	Store at -20°C for one year from date of receipt. After reconstitution, at 4°C for one month. It can also be aliquotted and stored frozen at -20°C for six months. Avoid repeated freeze-thaw cycles.
Host	Rabbit
Uniprot ID	P48298

### Technical Details

Immunogen	A synthetic peptide corresponding to a sequence at the C-terminus of mouse Eotaxin, identical to the related rat sequence.
Predicted Reactive Species	Hamster
Recommended Detection Systems	Boster recommends Enhanced Chemiluminescent Kit with anti-Rabbit IgG (EK1002) for Western blot.
Cross Reactivity	No cross-reactivity with other proteins
Isotype	Rabbit IgG
Form	Lyophilized
Concentration	Adding 0.2 ml of distilled water will yield a concentration of 500 ug/ml.

Purification	Immunogen affinity purified.
Suggested Dilutions	<p>Dilute the sample so that the expected range of concentrations fall within the detection range of this kit.</p> <p>If the expected range of concentration is unknown, a pilot test should be conducted to decide the optimal dilution ratio for your samples.</p> <p>Some PubMed article(s) citing the expression level of this target are as follows:</p> <p>Boster Bio's internal QC testing used:</p> <p>Western blot, 0.1-0.5ug/ml, Mouse, Rat</p>

## Anti-Eotaxin/CCL11 Antibody (PA1531) Images



Anti-Eotaxin antibody, PA1531, Western blotting  
Lane 1: Recombinant mouse Eotaxin Protein 10ng  
Lane 2: Recombinant mouse Eotaxin Protein 5ng  
Lane 3: Recombinant mouse Eotaxin Protein 2.5ng  
Lane 4: Recombinant mouse Eotaxin Protein 1.25ng

## Submit a product review to Biocompare.com

Submit a review of this product to Biocompare.com to receive a \$20 Amazon.com giftcard! Your reviews help your fellow scientists make the right decisions. Thank you for your contribution.



Anti-Eotaxin/CCL11 Antibody