

## Anti-ADAM10/ADAM10 Antibody

Catalog Number: PA1535

### About ADAM10

ADAM10, A Disintegrin and Metalloproteinase Domain 10, is also known as AD10. ADAM10 is a member of the ADAM family and members of this family are cell surface proteins with a unique structure possessing both potential adhesion and protease function. The ADAM10 gene is mapped to chromosome 15q21.3-q23. ADAM proteins contain an N-terminal signal sequence, followed by a prodomain, a metalloprotease-like domain, a disintegrin-like domain, a cysteine-rich region, an EGF-like repeat, a transmembrane domain, and a C-terminal cytoplasmic tail. Conversion of the membrane-bound precursor to a secreted mature protein is mediated by a protease termed TNFA convertase. ADAM10 possesses TNFA convertase activity.

### Overview

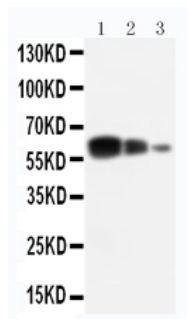
Product Name	Anti-ADAM10/ADAM10 Antibody
Reactive Species	Human
Description	Boster Bio Anti-ADAM10/ADAM10 Antibody catalog # PA1535. Tested in WB applications. This antibody reacts with Human.
Application	WB
Clonality	Polyclonal
Formulation	Each vial contains 5mg BSA, 0.9mg NaCl, 0.2mg Na <sub>2</sub> HPO <sub>4</sub> , 0.05mg Thimerosal, 0.05mg NaN <sub>3</sub> .
Storage Instructions	Store at -20°C for one year from date of receipt. After reconstitution, at 4°C for one month. It can also be aliquotted and stored frozen at -20°C for six months. Avoid repeated freeze-thaw cycles.
Host	Rabbit
Uniprot ID	O14672

### Technical Details

Immunogen	A synthetic peptide corresponding to a sequence at the C-terminus of human ADAM10.
Predicted Reactive Species	Monkey
Recommended Detection Systems	Boster recommends Enhanced Chemiluminescent Kit with anti-Rabbit IgG (EK1002) for Western blot.
Cross Reactivity	No cross-reactivity with other proteins
Isotype	Rabbit IgG
Form	Lyophilized

Concentration	Adding 0.2 ml of distilled water will yield a concentration of 500 ug/ml.
Purification	Immunogen affinity purified.
Suggested Dilutions	<p>Dilute the sample so that the expected range of concentrations fall within the detection range of this kit.</p> <p>If the expected range of concentration is unknown, a pilot test should be conducted to decide the optimal dilution ratio for your samples.</p> <p>Some PubMed article(s) citing the expression level of this target are as follows:</p> <p>Boster Bio's internal QC testing used:</p> <p>Western blot, 0.1-0.5ug/ml, Human</p>

## Anti-ADAM10/ADAM10 Antibody (PA1535) Images



Anti-ADAM10 antibody, PA1535, Western blotting  
Lane 1: Recombinant Human ADAM10 Protein 10ng  
Lane 2: Recombinant Human ADAM10 Protein 5ng  
Lane 3: Recombinant Human ADAM10 Protein 2.5ng

## 1 Publications Citing This Product

1. PubMed ID: 27602753, Gemcitabine inhibits immune escape of pancreatic cancer by down regulating the soluble ULBP2 protein

Visit [bosterbio.com/anti-adam10-antibody-pa1535-boster.html](http://bosterbio.com/anti-adam10-antibody-pa1535-boster.html) to see all 1 publications.

## Submit a product review to Biocompare.com

Submit a review of this product to Biocompare.com to receive a \$20 Amazon.com giftcard! Your reviews help your fellow scientists make the right decisions. Thank you for your contribution.



Anti-ADAM10/ADAM10 Antibody