

## Anti-ATF4 Antibody

Catalog Number: PA1537

### About ATF4

ATF4, Activating Transcription Factor 4, is also known as CREB2. ATF4 belongs to the large ATF/CREB family of transcription factors which bind DNA via their basic region and dimerize via their leucine zipper domain to form a variety of homo- and heterodimers to regulate gene transcription. It is identified that members of this family share significant sequence similarity within a leucine zipper DNA-binding motif and an adjacent basic region. The ATF4 gene is mapped to chromosome 22. Unlike CREB, which activates transcription from CRE-containing promoters, CREB2 functions as a specific repressor of CRE-dependent transcription. The transcriptional repressor activity resides within the C-terminal leucine zipper and basic domain region of the CREB2 protein.

### Overview

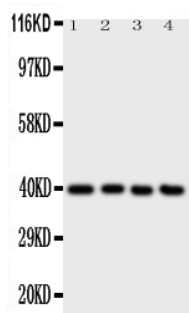
Product Name	Anti-ATF4 Antibody
Reactive Species	Human, Mouse, Rat
Description	Boster Bio Anti-ATF4 Antibody catalog # PA1537. Tested in WB applications. This antibody reacts with Human, Mouse, Rat.
Application	WB
Clonality	Polyclonal
Formulation	Each vial contains 5mg BSA, 0.9mg NaCl, 0.2mg Na <sub>2</sub> HPO <sub>4</sub> , 0.05mg Thimerosal, 0.05mg NaN <sub>3</sub> .
Storage Instructions	Store at -20°C for one year from date of receipt. After reconstitution, at 4°C for one month. It can also be aliquotted and stored frozen at -20°C for six months. Avoid repeated freeze-thaw cycles.
Host	Rabbit
Uniprot ID	P18848

### Technical Details

Immunogen	A synthetic peptide corresponding to a sequence at the C-terminus of human ATF4, identical to the related rat and mouse sequences.
Predicted Reactive Species	Hamster
Recommended Detection Systems	Boster recommends Enhanced Chemiluminescent Kit with anti-Rabbit IgG (EK1002) for Western blot.
Cross Reactivity	No cross-reactivity with other proteins
Isotype	Rabbit IgG
Form	Lyophilized

Concentration	Adding 0.2 ml of distilled water will yield a concentration of 500 ug/ml.
Purification	Immunogen affinity purified.
Suggested Dilutions	<p>Dilute the sample so that the expected range of concentrations fall within the detection range of this kit.</p> <p>If the expected range of concentration is unknown, a pilot test should be conducted to decide the optimal dilution ratio for your samples.</p> <p>Some PubMed article(s) citing the expression level of this target are as follows:</p> <p>Boster Bio's internal QC testing used:</p> <p>Western blot, 0.1-0.5ug/ml, Human, Rat, Mouse</p>

## Anti-ATF4 Antibody (PA1537) Images



Anti-ATF4 antibody, PA1537, Western blotting  
All lanes: Anti ATF4 (PA1537) at 0.5ug/ml  
Lane 1: A431 Whole Cell Lysate at 40ug  
Lane 2: RAJI Whole Cell Lysate at 40ug  
Lane 3: CEM Whole Cell Lysate at 40ug  
Lane 4: HUT Whole Cell Lysate at 40ug  
Predicted bind size: 39KD  
Observed bind size: 39KD

## 1 Publications Citing This Product

1. PubMed ID: 23826386, MARVELD1 Inhibits Nonsense-Mediated RNA Decay by Repressing Serine Phosphorylation of UPF1

Visit [bosterbio.com/anti-atf4-antibody-pa1537-boster.html](https://bosterbio.com/anti-atf4-antibody-pa1537-boster.html) to see all 1 publications.

## Submit a product review to Biocompare.com

Submit a review of this product to Biocompare.com to receive a \$20 Amazon.com giftcard! Your reviews help your fellow scientists make the right decisions. Thank you for your contribution.



Anti-ATF4 Antibody