

Anti-BCAT1 Antibody

Catalog Number: PA1538

About BCAT1

BCAT1, Branched-chain Aminotransferase1, is also known as BCT1. The BCAT1 gene is highly expressed early in embryogenesis, and during organogenesis its expression is localized to the neural tube, the somites, and the mesonephric tubules. The gene is also expressed in several MYC-based tumors. The BCAT1 gene is mapped to chromosome 12. Lack of the enzyme BCT can cause auxotroph, a kind of auxotrophic mutant in Chinese-hamster ovary cells that lacks the ability to grow if alpha-ketoisovaleric acid, alpha-ketoisocaproic acid, and alpha-keto-beta-methylvaleric acid are substituted for valine, leucine, and isoleucine in the culture medium.

Overview

Product Name	Anti-BCAT1 Antibody
Reactive Species	Human
Description	Boster Bio Anti-BCAT1 Antibody catalog # PA1538. Tested in IHC, WB applications. This antibody reacts with Human.
Application	IHC, WB
Clonality	Polyclonal
Formulation	Each vial contains 4 mg Trehalose, 0.9 mg NaCl and 0.2 mg Na ₂ HPO ₄ .
Storage Instructions	Store at -20°C for one year from date of receipt. After reconstitution, at 4°C for one month. It can also be aliquotted and stored frozen at -20°C for six months. Avoid repeated freeze-thaw cycles.
Host	Rabbit
Uniprot ID	P54687

Technical Details

Immunogen	A synthetic peptide corresponding to a sequence at the C-terminus of human BCAT1, different from the related mouse sequence by one amino acid, rat sequence by three amino acids.
Predicted Reactive Species	Monkey, Rabbit
Recommended Detection Systems	Boster recommends Enhanced Chemiluminescent Kit with anti-Rabbit IgG (EK1002) for Western blot, and HRP Conjugated anti-Rabbit IgG Super Vision Assay Kit (SV0002-1) for IHC(P).
Cross Reactivity	No cross-reactivity with other proteins
Isotype	Rabbit IgG
Form	Lyophilized
Concentration	Adding 0.2 ml of distilled water will yield a concentration of 500 µg/ml.

Purification	Immunogen affinity purified.
Suggested Dilutions	<p>Dilute the sample so that the expected range of concentrations fall within the detection range of this kit.</p> <p>If the expected range of concentration is unknown, a pilot test should be conducted to decide the optimal dilution ratio for your samples.</p> <p>Some PubMed article(s) citing the expression level of this target are as follows:</p> <p>Boster Bio's internal QC testing used:</p> <p>Immunohistochemistry (Paraffin-embedded Section), 2-5ug/ml, Human, By Heat</p> <p>Western blot, 0.1-0.5ug/ml, Human</p>

Anti-BCAT1 Antibody (PA1538) Images

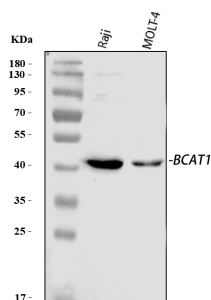


Figure 1. Western blot analysis of BCAT1 using anti-BCAT1 antibody (PA1538).

Electrophoresis was performed on a 5-20% SDS-PAGE gel at 70V (Stacking gel) / 90V (Resolving gel) for 2-3 hours. The sample well of each lane was loaded with 30 ug of sample under reducing conditions.

Lane 1: human Raji whole cell lysates,

Lane 2: human MOLT-4 whole cell lysates.

After electrophoresis, proteins were transferred to a nitrocellulose membrane at 150 mA for 50-90 minutes. Blocked the membrane with 5% non-fat milk/TBS for 1.5 hour at RT. The membrane was incubated with rabbit anti-BCAT1 antigen affinity purified polyclonal antibody (Catalog # PA1538) at 0.5 ug/mL overnight at 4°C, then washed with TBS-0.1%Tween 3 times with 5 minutes each and probed with a goat anti-rabbit IgG-HRP secondary antibody at a dilution of 1:5000 for 1.5 hour at RT. The signal is developed using an Enhanced Chemiluminescent detection (ECL) kit (Catalog # EK1002) with Tanon 5200 system. A specific band was detected for BCAT1 at approximately 43 kDa. The expected band size for BCAT1 is at 43 kDa.

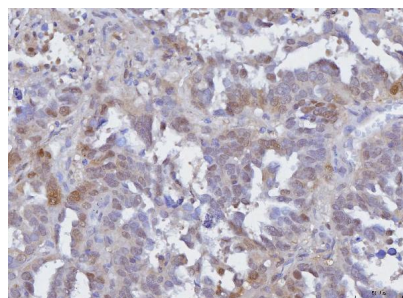


Figure 2. IHC analysis of BCAT1 using anti-BCAT1 antibody (PA1538).

BCAT1 was detected in a paraffin-embedded section of human ovarian adenoma tissue. Heat mediated antigen retrieval was performed in EDTA buffer (pH 8.0, epitope retrieval solution). The tissue section was blocked with 10% goat serum. The tissue section was then incubated with 2 ug/ml rabbit anti-BCAT1 Antibody (PA1538) overnight at 4°C. Peroxidase Conjugated Goat Anti-rabbit IgG was used as secondary antibody and incubated for 30 minutes at 37°C. The tissue section was developed using HRP Conjugated Rabbit IgG Super Vision Assay Kit (Catalog # SV0002) with DAB as the chromogen.

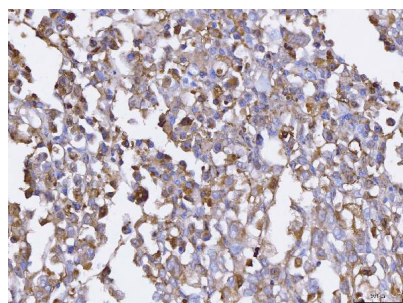


Figure 3. IHC analysis of BCAT1 using anti-BCAT1 antibody (PA1538).

BCAT1 was detected in a paraffin-embedded section of human pancreatic cancer tissue. Heat mediated antigen retrieval was performed in EDTA buffer (pH 8.0, epitope retrieval solution). The tissue section was blocked with 10% goat serum. The tissue section was then incubated with 2 ug/ml rabbit anti-BCAT1 Antibody (PA1538) overnight at 4°C. Peroxidase Conjugated Goat Anti-rabbit IgG was used as secondary antibody and incubated for 30 minutes at 37°C. The tissue section was developed using HRP Conjugated Rabbit IgG Super Vision Assay Kit (Catalog # SV0002) with DAB as the chromogen.

Submit a review of this product to Biocompare.com to receive a \$20 Amazon.com giftcard! Your reviews help your fellow scientists make the right decisions. Thank you for your contribution.



Anti-BCAT1 Antibody