

Anti-Caveolin-2/CAV2 Antibody

Catalog Number: PA1540

About CAV2

Caveolin-2 is a protein related to caveolin-1 which is derived caveolin-enriched membranes. CAV2 and CAV1 are similar in most respects and they differ in their functional interactions with heterotrimeric G proteins. Caveolin-1 and caveolin-2 are expressed in neuronal cells. Caveolin-2 was upregulated in response to neuronal cell injury. The CAV2 gene is mapped to 7q31.1-q31.2. The CAV1 gene contains 3 exons, while the human CAV2 gene contains 2 exons. The boundary of the last exon of CAV1 and CAV2 are analogous, suggesting that they arose through gene duplication. The genes encoding murine caveolin-1 and -2 are colocalized within the A2 region of mouse chromosome 6.

Overview

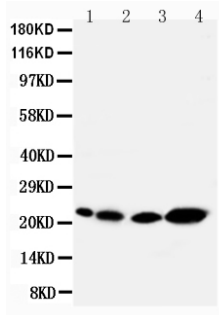
| | |
|----------------------|-------------------------------------------------------------------------------------------------------------------------------------------------------------------------------------------------------|
| Product Name | Anti-Caveolin-2/CAV2 Antibody |
| Reactive Species | Human, Mouse, Rat |
| Description | Boster Bio Anti-Caveolin-2/CAV2 Antibody catalog # PA1540. Tested in IHC, WB applications. This antibody reacts with Human, Mouse, Rat. |
| Application | IHC, WB |
| Clonality | Polyclonal |
| Formulation | Each vial contains 5mg BSA, 0.9mg NaCl, 0.2mg Na ₂ HPO ₄ , 0.05mg Thimerosal, 0.05mg NaN ₃ . |
| Storage Instructions | Store at -20°C for one year from date of receipt. After reconstitution, at 4°C for one month. It can also be aliquotted and stored frozen at -20°C for six months. Avoid repeated freeze-thaw cycles. |
| Host | Rabbit |
| Uniprot ID | P51636 |

Technical Details

| | |
|-------------------------------|----------------------------------------------------------------------------------------------------------------------------------------------------------------------------------|
| Immunogen | A synthetic peptide corresponding to a sequence at the N-terminus of human Caveolin-2, different from the related rat and mouse sequences by one amino acid. |
| Predicted Reactive Species | Hamster |
| Recommended Detection Systems | Boster recommends Enhanced Chemiluminescent Kit with anti-Rabbit IgG (EK1002) for Western blot, and HRP Conjugated anti-Rabbit IgG Super Vision Assay Kit (SV0002-1) for IHC(P). |
| Cross Reactivity | No cross-reactivity with other proteins |
| Isotype | Rabbit IgG |
| Form | Lyophilized |
| Concentration | Adding 0.2 ml of distilled water will yield a concentration of 500 ug/ml. |

| | |
|---------------------|------------------------------------------------------------------------------------------------------------------------------------------------------------------------------------------------------------------------------------------------------------------------------------------------------------------------------------------------------------------------------------------------------------------------------------------------------------------------------------------------------------------------------------------------------------------|
| Purification | Immunogen affinity purified. |
| Suggested Dilutions | <p>Dilute the sample so that the expected range of concentrations fall within the detection range of this kit.</p> <p>If the expected range of concentration is unknown, a pilot test should be conducted to decide the optimal dilution ratio for your samples.</p> <p>Some PubMed article(s) citing the expression level of this target are as follows:</p> <p>Boster Bio's internal QC testing used:</p> <p>Immunohistochemistry (Paraffin-embedded Section), 0.5-1ug/ml, Human, Rat, Mouse, By Heat</p> <p>Western blot, 0.1-0.5ug/ml, Human, Rat, Mouse</p> |

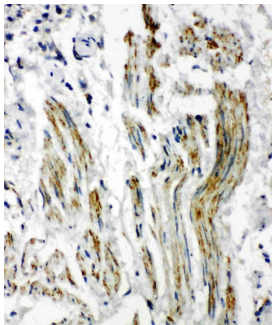
Anti-Caveolin-2/CAV2 Antibody (PA1540) Images



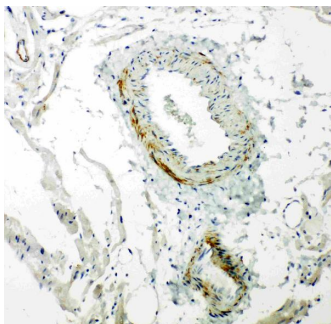
Anti-Caveolin-2 antibody, PA1540, Western blotting
Lane 1: Rat Heart Tissue Lysate
Lane 2: Rat lung Tissue Lysate
Lane 3: HELA Cell Lysate
Lane 4: A431 Cell Lysate



Anti-Caveolin-2 antibody, PA1540, Western blotting
All lanes: Anti Caveolin-2 (PA1540) at 0.5ug/ml
Lane 1: HELA Whole Cell Lysate at 40ug
Lane 2: SMMC Whole Cell Lysate at 40ug
Lane 3: COLO320 Whole Cell Lysate at 40ug
Predicted bind size: 17KD
Observed bind size: 17KD



Anti-Caveolin-2 antibody, PA1540, IHC(P)
IHC(P): Human Lung Cancer Tissue



Anti-Caveolin-2 antibody, PA1540, IHC(P)
IHC(P): Rat Cardiac Muscle Tissue

1 Publications Citing This Product

1. PubMed ID: 24175763, Wang Nn, Zhao Lj, Wu Ln, He Mf, Qu Jw, Zhao Yb, Zhao Wz, Li Js, Wang Jh. Asian Pac J Cancer Prev. 2013;14(9):4983-8. Mechanistic Analysis Of Taxol-Induced Multidrug Resistance In An Ovarian Cancer Cell Line.

Visit bosterbio.com/anti-caveolin-2-antibody-pa1540-boster.html to see all 1 publications.

Submit a product review to Biocompare.com

Submit a review of this product to Biocompare.com to receive a \$20 Amazon.com giftcard! Your reviews help your fellow scientists make the right decisions. Thank you for your contribution.



Anti-Caveolin-2/CAV2 Antibody