

Anti-Cyclin-dependent kinase 1 CDK1 Antibody

Catalog Number: PA1544

About CDK1

CDC2, Cell Division Cycle 2, is also known as CDK1 (Cyclin-dependent Kinase 1). CDC2 is a catalytic subunit of a protein kinase complex, called the M-phase promoting factor, that induces entry into mitosis and is universal among eukaryotes. In HeLa cells CDC2 is the most abundant phosphotyrosine-containing protein and its phosphotyrosine content is subject to cell cycle regulation. CDC2 gene is located on chromosome 10.

Overview

Product Name	Anti-Cyclin-dependent kinase 1 CDK1 Antibody
Reactive Species	Human
Description	Boster Bio Anti-Cyclin-dependent kinase 1 CDK1 Antibody catalog # PA1544. Tested in WB applications. This antibody reacts with Human.
Application	WB
Clonality	Polyclonal
Formulation	Each vial contains 5mg BSA, 0.9mg NaCl, 0.2mg Na ₂ HPO ₄ , 0.05mg Thimerosal, 0.05mg NaN ₃ .
Storage Instructions	Store at -20°C for one year from date of receipt. After reconstitution, at 4°C for one month. It can also be aliquotted and stored frozen at -20°C for six months. Avoid repeated freeze-thaw cycles.
Host	Rabbit
Uniprot ID	P06493

Technical Details

Immunogen	A synthetic peptide corresponding to a sequence at the C-terminus of human CDK1, different from the relative rat and mouse sequences by two amino acids.
Predicted Reactive Species	Canine, Horse, Monkey, Rabbit
Recommended Detection Systems	Boster recommends Enhanced Chemiluminescent Kit with anti-Rabbit IgG (EK1002) for Western blot.
Cross Reactivity	No cross-reactivity with other proteins
Isotype	Rabbit IgG
Form	Lyophilized
Concentration	Adding 0.2 ml of distilled water will yield a concentration of 500 ug/ml.
Purification	Immunogen affinity purified.

Suggested Dilutions

Dilute the sample so that the expected range of concentrations fall within the detection range of this kit.

If the expected range of concentration is unknown, a pilot test should be conducted to decide the optimal dilution ratio for your samples.

Some PubMed article(s) citing the expression level of this target are as follows:

Boster Bio's internal QC testing used:

Western blot, 0.1-0.5ug/ml, Human

Anti-Cyclin-dependent kinase 1 CDK1 Antibody (PA1544) Images

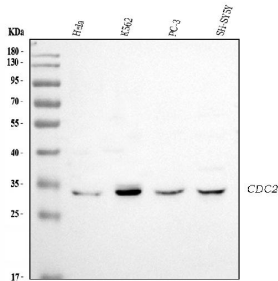


Figure 1. Western blot analysis of CDK1 using anti-CDK1 antibody (PA1544).

Electrophoresis was performed on a 5-20% SDS-PAGE gel at 70V (Stacking gel) / 90V (Resolving gel) for 2-3 hours. The sample well of each lane was loaded with 30 ug of sample under reducing conditions.

Lane 1: human Hela whole cell lysates,

Lane 2: human K562 whole cell lysates,

Lane 3: human PC-3 whole cell lysates,

Lane 4: human SH-SY5Y whole cell lysates.

After electrophoresis, proteins were transferred to a nitrocellulose membrane at 150 mA for 50-90 minutes.

Blocked the membrane with 5% non-fat milk/TBS for 1.5 hour at RT.

The membrane was incubated with rabbit anti-CDK1 antigen affinity purified polyclonal antibody (Catalog # PA1544) at 0.5 ug/mL overnight at 4°C, then washed with TBS-0.1%Tween 3 times with 5 minutes each and probed with a goat anti-rabbit IgG-HRP secondary antibody at a dilution of 1:5000 for 1.5 hour at RT. The signal is developed using an Enhanced Chemiluminescent detection (ECL) kit (Catalog # EK1002) with Tanon 5200 system. A specific band was detected for CDK1 at approximately 34 kDa. The expected band size for CDK1 is at 34 kDa.

13 Publications Citing This Product

1. PubMed ID: 26440151, Dietary NiCl₂ causes G2/M cell cycle arrest in the broiler's kidney
2. PubMed ID: 27991546, APC/CCDC20 and APC/C play pivotal roles in the process of embryonic development in *Artemia sinica*
3. PubMed ID: 25734831, Ren J, Huang Q, Xu Y, Yang M, Yang J, Hu K. Anticancer Drugs. 2015 Jul;26(6):599-611. Doi: 10.1097/Cad.0000000000000224. Isoflavone Lupiwighteone Induces Cytotoxic, Apoptotic, And Antiangiogenic Activities In Du-145 Prostate Cancer Cells.

Visit bosterbio.com/anti-cdk1-antibody-pa1544-boster.html to see all 13 publications.

Submit a product review to Biocompare.com

Submit a review of this product to Biocompare.com to receive a \$20 Amazon.com giftcard! Your reviews help your fellow scientists make the right decisions. Thank you for your contribution.



Anti-Cyclin-dependent kinase 1 CDK1 Antibody